



US007957907B2

(12) **United States Patent**
Sorenson et al.

(10) **Patent No.:** **US 7,957,907 B2**
(45) **Date of Patent:** **Jun. 7, 2011**

(54) **METHOD FOR MOLECULAR GENEALOGICAL RESEARCH**
(75) Inventors: **James L. Sorenson**, Salt Lake City, UT (US); **Scott R. Woodward**, Alpine, UT (US); **Joel Myres**, Provo, UT (US); **Natalie Myres**, legal representative, Provo, UT (US)

6,105,147 A 8/2000 Molloy
6,277,567 B1 8/2001 Graziosi
6,528,260 B1 * 3/2003 Blumenfeld et al. 435/6
6,570,567 B1 5/2003 Eaton
2003/0113727 A1 6/2003 Girn et al.
2003/0204418 A1 10/2003 Ledley
2004/0122705 A1 6/2004 Sabol et al.
2004/0243531 A1 12/2004 Dean
2006/0020398 A1 1/2006 Vernon et al.
2006/0136143 A1 6/2006 Avinash
2006/0161535 A1 7/2006 Holbrook

(73) Assignee: **Sorenson Molecular Genealogy Foundation**, Salt Lake City, UT (US)

(*) Notice: Subject to any disclaimer, the term of this patent is extended or adjusted under 35 U.S.C. 154(b) by 0 days.

(21) Appl. No.: **10/113,901**

(22) Filed: **Mar. 29, 2002**

(65) **Prior Publication Data**

US 2003/0172065 A1 Sep. 11, 2003

Related U.S. Application Data

(60) Provisional application No. 60/280,226, filed on Mar. 30, 2001.

(51) **Int. Cl.**

G01N 33/48 (2006.01)
G06F 19/00 (2006.01)
G01N 31/00 (2006.01)
G06G 7/48 (2006.01)

(52) **U.S. Cl.** **702/19; 702/20; 702/22; 703/11**

(58) **Field of Classification Search** **702/19, 702/20; 706/13, 45, 48, 18, 21; 707/6**

See application file for complete search history.

(56) **References Cited**

U.S. PATENT DOCUMENTS

4,201,386 A 5/1980 Seale et al.
5,115,504 A 5/1992 Belove et al.
5,246,374 A 9/1993 Boodram
5,413,908 A * 5/1995 Jeffreys 435/6
5,467,471 A 11/1995 Bader
5,978,811 A 11/1999 Smiley
6,049,803 A 4/2000 Szalwinski

OTHER PUBLICATIONS

“Genealogy” definition, Merriam-Webster online dictionary, 2004, on the world wide web at <http://www.m-w.com/cgi-bin/dictionary?book=Dictionary&va=genealogy>, 1 page.*

Wilson et al. “Genealogical Inference from Microsatellite Data” *Genetics* (1998) 150:499-510.*

Corach et al. “Mass disasters: Rapid molecular screening of human remains by means of short tandem repeats typing” *Electrophoresis* (1995) vol. 16, pp. 1617-1623.*

Website printout, *Oxford Ancestors*, Feb. 12, 2001, 4 pages, www.oxfordancestors.com.

Website printout, Family Tree DNA, <http://www.familytreedna.com/main.html>, Feb 8, 2001, 2 pages.

Butler, John M., *Commonly Used Short Tandem Repeat Markers, Forensic DNA Typing*, Chapter 5, 2001, pp. 53-54, Academic Press. International Search Report for International Application No. PCT/US07/20884 dated Mar. 10, 2008.

PCT International Preliminary Report on Patentability, PCT/US2007/020884, dated Apr. 16, 2009.

Stedman’s Medical Dictionary 27th Edition, 2000, p. 703.

* cited by examiner

Primary Examiner — Eric S Dejong

(74) *Attorney, Agent, or Firm* — TraskBritt, P.C.

(57) **ABSTRACT**

A genealogical research and record keeping system and method for identifying commonalities in haplotypes and other genetic characteristics of two or more individual members of a biological sample. Chromosomal fragments identical by descent identify family ties between siblings, parents and children and ancestors and progeny across many generations. It is particularly useful in corroborating and improving the accuracy of genealogical data, and identifying previously unknown genetic relationships.

12 Claims, 6 Drawing Sheets

Regions of Differential Variation in DNA

<i>Spacer</i>	<i>Regulatory</i>	<i>Structural</i>
<i>Almost no selection pressure</i>	<i>Under moderate to strong selection</i>	<i>Under strong selection pressure</i>
<i>May have multiple nt changes per 1000 bp's</i>	<i>Possibly 1 nt change in 1000 bp's</i>	<i>Very few variations from person to person</i>
<i>INDIVIDUALS & FAMILIES</i>	<i>TRIBES OR CLANS</i>	<i>SPECIES</i>

Fig. 1

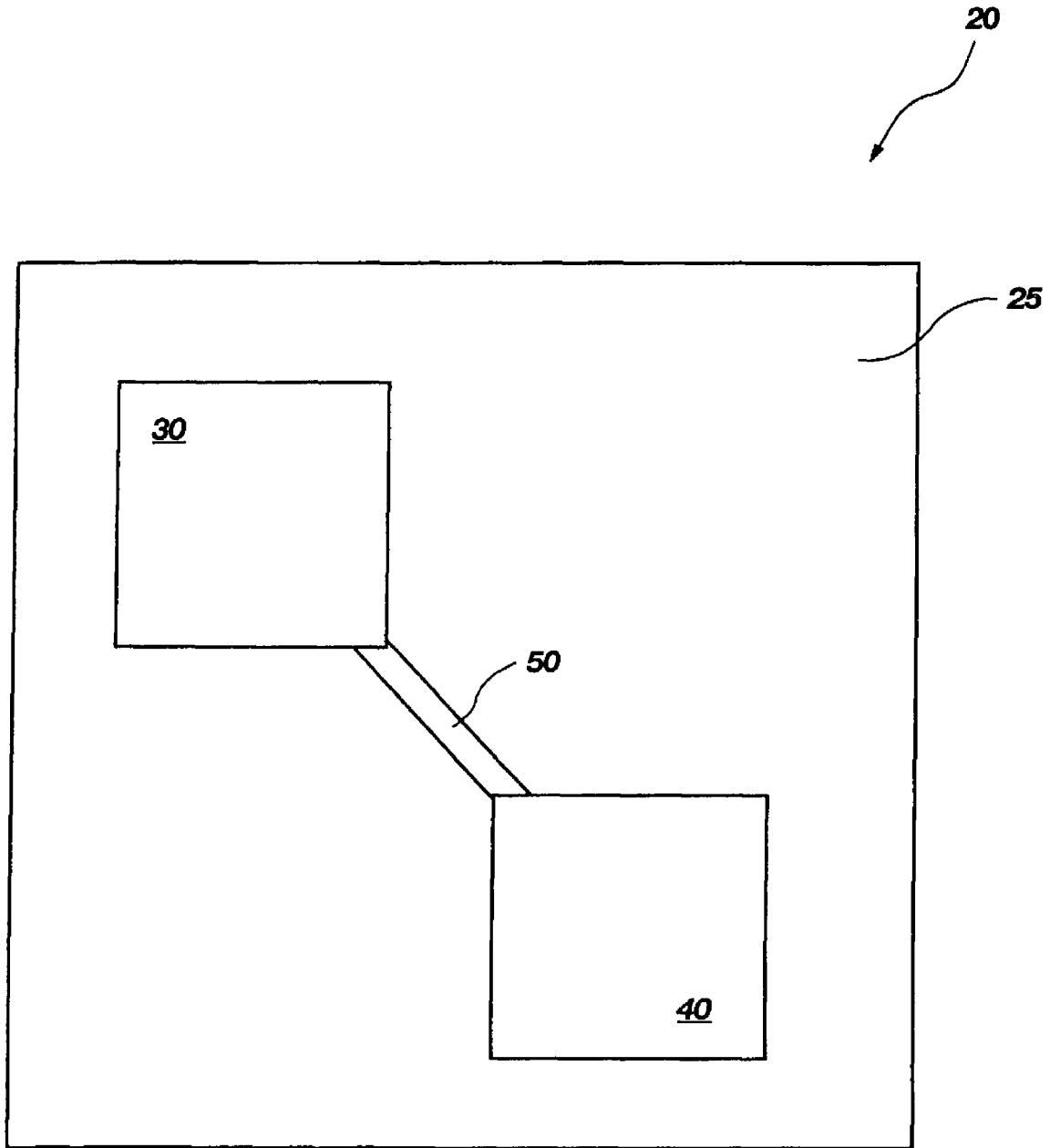


Fig. 2

AFET-

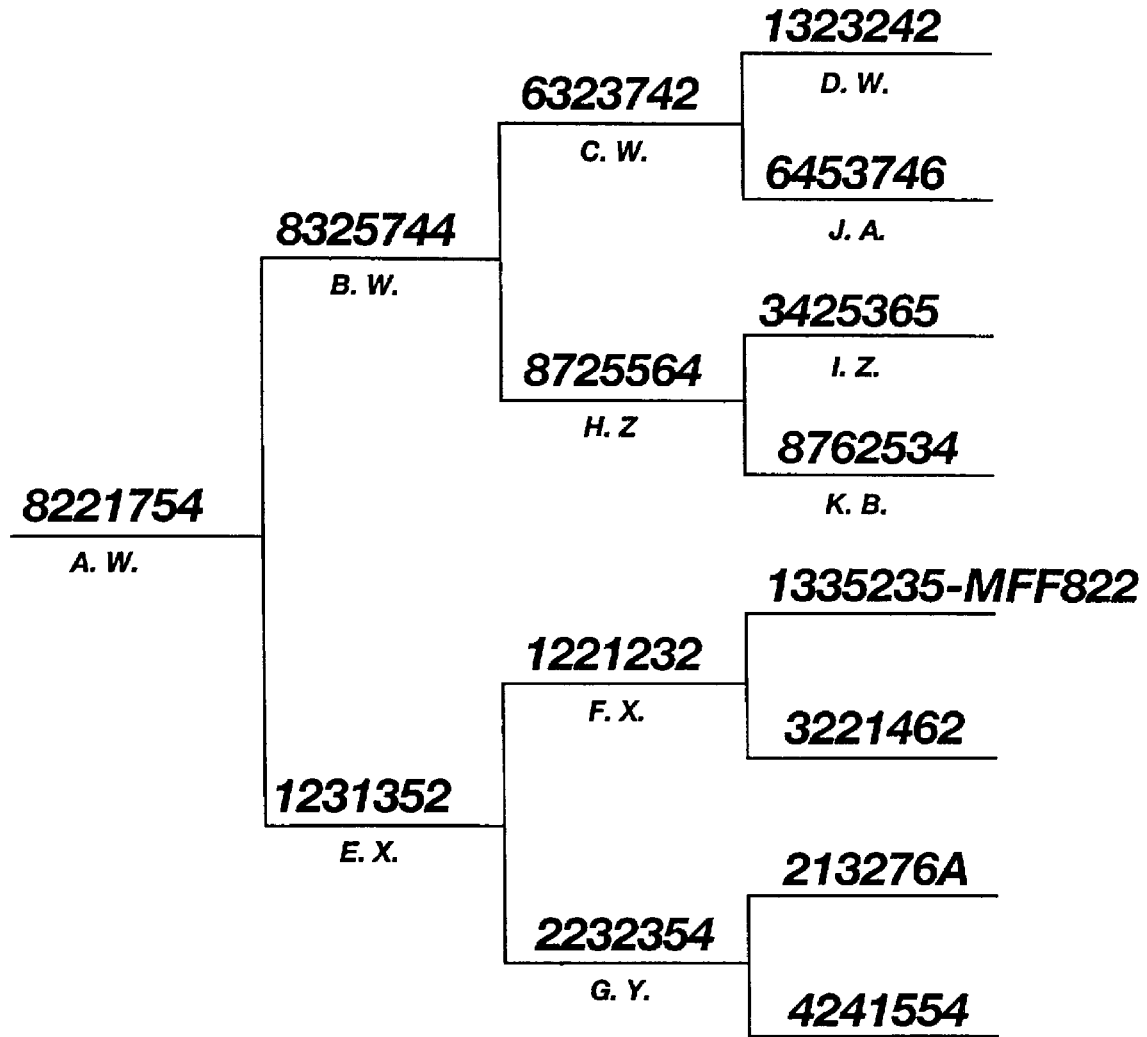


Fig. 3

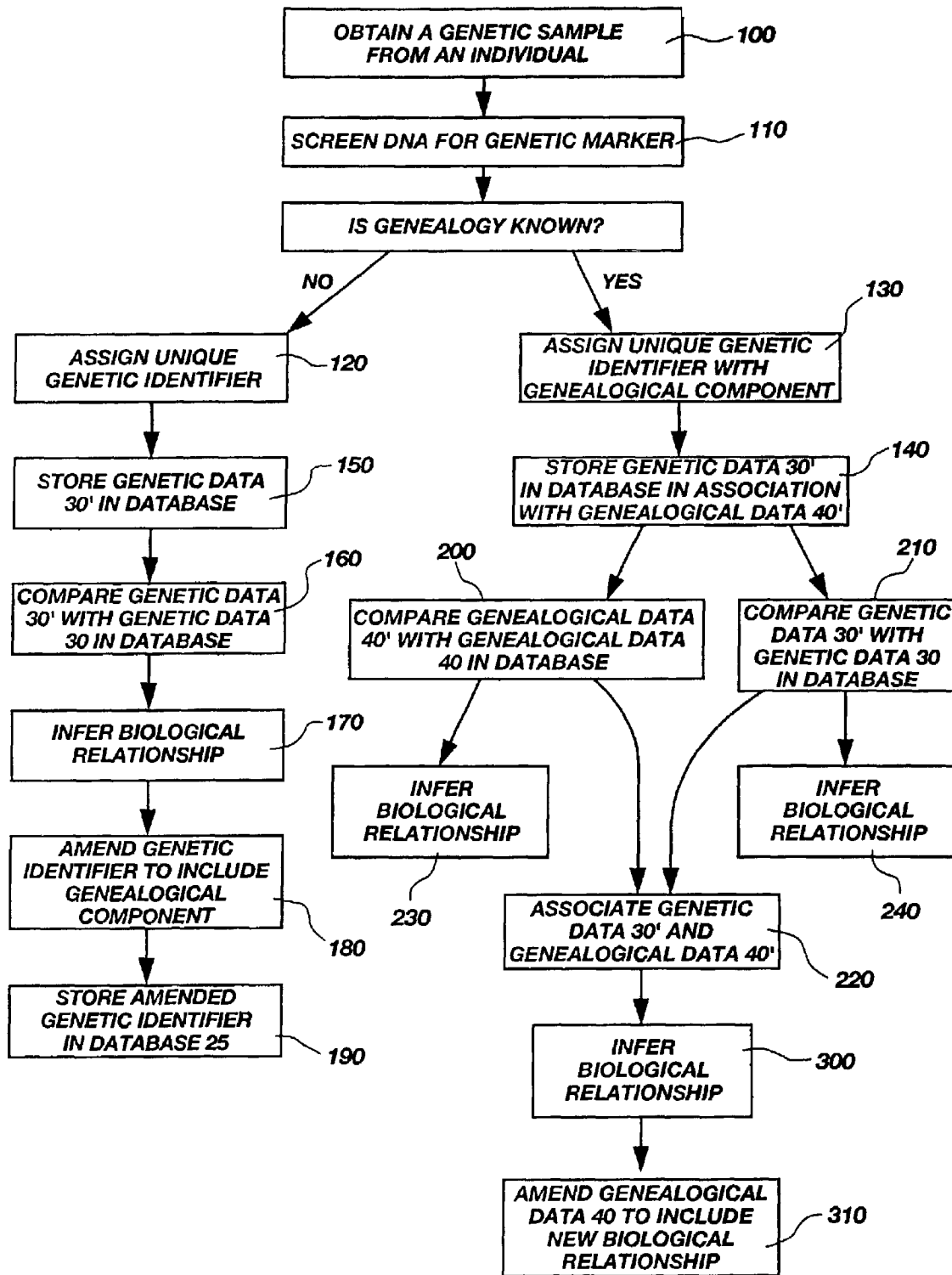


Fig. 4

What Does a DNA Identification Look Like?

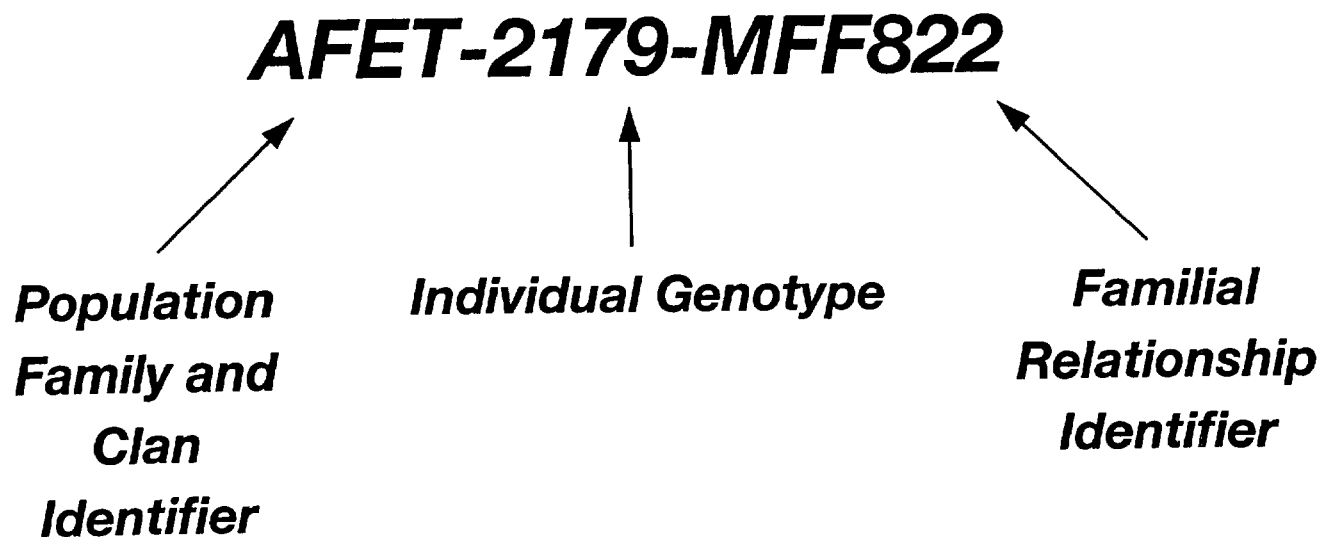
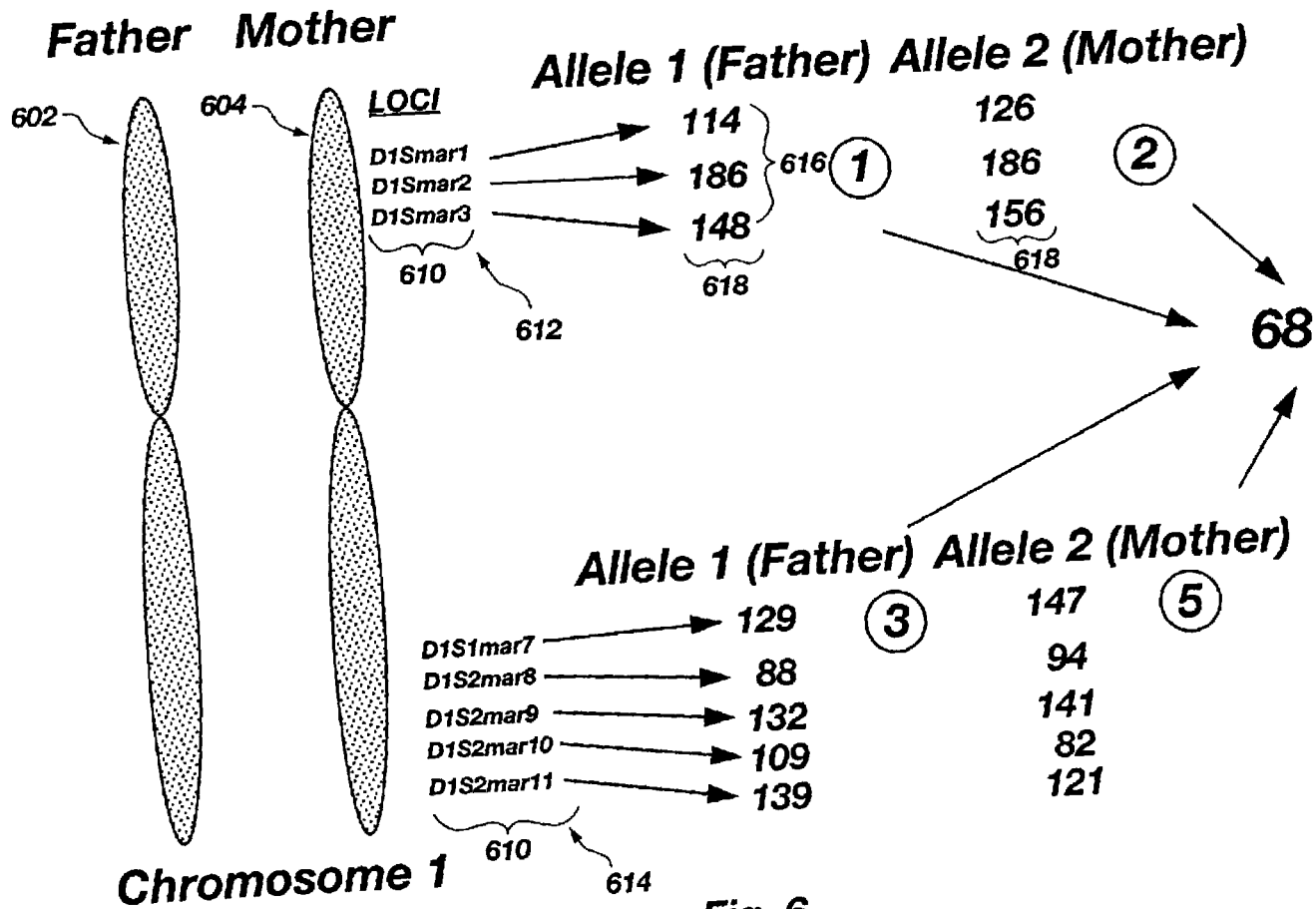


Fig. 5

Chromosome 1 Reconstruction



1

METHOD FOR MOLECULAR GENEALOGICAL RESEARCH

CROSS-REFERENCE TO RELATED APPLICATIONS

Under the provisions of 35 U.S.C. §119(e), priority is claimed from Provisional Patent Application Ser. No. 60/280, 226 filed Mar. 30, 2001.

TECHNICAL FIELD

This invention relates generally to genealogical research and record keeping, and is specifically directed to identifying commonalities in genetic characteristics correlated with specific genetic markers. The invention provides a system and method particularly useful in corroborating and improving the accuracy of genealogical records, and identifying previously unknown genealogical relationships.

BACKGROUND

Genealogical record keeping has traditionally involved isolated efforts to assemble and maintain stores of information about progenitors for progeny. Different cultures have created unique methods for maintaining genealogical records. Some tribes in western Africa, for example, have designated individuals who are reputed to recount by memory the names of scores of generations of ancestry and considerable additional detailed information about many individual ancestors. Most western civilizations have normally maintained written records to store such names and information, including records of births, christenings, marriages, deaths, military, civic and other governmental involvement. Much of this information is accessible on microfiche and on any of a variety of electronic media, including the Internet.

U.S. Patents with application to genealogical record keeping include: U.S. Pat. No. 6,049,803 to Szalwinski "Documenting System for Entities, Attributes and Schema of a Relational Database;" U.S. Pat. No. 5,978,811 to Smiley "Information Repository System and Method for Modeling Data;" U.S. Pat. No. 5,467,471 to Bader "Maintaining Databases by means of Hierarchical Genealogical Table;" U.S. Pat. No. 5,246,374 to Boodram "Expandable Family Tree and Modular Kit for Building the Same;" U.S. Pat. No. 5,115,504 to Belove, et al. "Information Management System;" U.S. Pat. No. 4,201,386 to Seale, et al. "Genealogy Apparatus."

Unfortunately, the history of some people and communities has been lost or destroyed through time. In such instances, written documents are uninformative or simply do not exist. For example, descendants of slaves are often unable to locate any records of their ancestors. Illegitimacy or adoption may obstruct information or prevent access to records of biological ancestors. Similarly, immigration records may not accurately reflect the country of origin or complete surname of an individual. All of these circumstances can present significant obstacles for individuals trying to trace their "roots." Additionally, written information relies, by its nature, on the correctness of the source. Inaccuracies in such records are rife due to limited memory, human error and purposeful efforts to conceal inconvenient or embarrassing facts.

Molecular genealogy merges the science of genetics with the study of genealogy and provides an alternative method of identifying genealogical information. By utilizing the biological genetic record that each individual retains of his/her past coded in the DNA of that individual, it is possible to

2

reveal important clues as to his/her origin and relationship to any other person or population.

Molecular genealogy links individuals together in "family trees" based on the unique identification of genetic markers. A polymorphic genetic marker represents a specific location on a chromosome (locus) where the basic genetic units exist. A difference of a single nucleotide with another at a particular location on a chromosome is called a Single Nucleotide Polymorphism ("SNP"), or point mutation and other polymorphisms are determined by the number of short tandem repeats ("STR") of simple sequence DNA. Variant copies at any chromosomal location are termed "alleles". Different combinations of polymorphisms on a particular chromosome can be arranged as haplotypes. The more closely related two individuals are, the more alleles they will share in common. Any two individuals may share alleles at one or a few locations. However, examination of several dozen or hundreds of chromosomal locations will uncover differences even among closely related persons. The compilation of multiple genetic markers is referred to as a genotype and serves as a unique genetic identifier for any given individual. To reconstruct molecular genealogies, it is necessary to utilize known biological relationships and correlate this information with the transmission of genetic markers through time.

Information encoded in the DNA of an individual and/or population can be used to determine the relatedness of individuals, families, tribal groups, and populations. Pedigrees based on genetic markers can reveal relationships not detectable in genealogies based only on names, written records, or oral traditions. The fact that DNA is inherited equally from both biological parents means that DNA can be used not only to create unique identifiers, but also to identify members of the same family, the same clan or tribal group, or the same population.

Prior art genetic record keeping systems and methods, fueled significantly by the human genome project, identify genetic characteristics of individual members of human and other species. Some records are directed to genetic characteristics in common between and among two or more individual members of a given biological sample, irrespective of familial relation. Examples of such genetic characteristics include genes determinative of human eye, hair and skin color, height and other physical characteristics. Inter-species analyses and records have been pursued as well, such as the study of commonalities in the genetic make up of various primates. Similar genetic characteristics may be identified among intra familial relations as a portion of a broader lineal genetic inheritance, such as a proclivity toward cancers, heart disease, obesity and other conditions in some family lines. An example of such intra-familial genetic characteristics is a genetic marker for the cystic fibrosis gene discovered by Scott R. Woodward, Ph.D. et al. then of the University of Utah.

The study of any of a variety of genetic characteristics and their presence among a defined familial group has heretofore focused on medical applications within relatively few generations. Similarly, the nexus of the genealogical and genotypical disciplines finds expression only in a very limited sense in such fields as forensic science and paternity determinations, and then only for a relatively limited number of generations.

Some potential genealogical applications of genetic science are limited in their usefulness, such as the notion that all sons inherit their entire Y-chromosome from their fathers and all children inherit identical mitochondria from their mothers. For example, Y-chromosome genetic markers were analyzed in an attempt to determine whether Thomas Jefferson fathered any illegitimate children with Sally Hemings. Jeffer-

son did not have any known direct male descendants. Therefore, a genetic sample from a known, living male relative of Jefferson's uncle was compared with genetic samples from known living relative male relatives of Hemings' sons. Scholars debate the conclusiveness of the test but acknowledge a likelihood that Jefferson fathered at least one son with Hemings. However, because Y-chromosome genetic markers were studied, geneticists were unable to determine whether another male relative of Jefferson fathered the children or whether any of Hemings' daughters were related to Jefferson. Similarly, geneticists could not confirm their theories by examining genetic samples from known descendants of Jefferson's daughters.

Similarly, men of Jewish descent can determine whether they are of Cohanim lineage by examination of Y-chromosome genetic markers. Such sex-chromosome investigations are limited because they involve a limited number of genetic markers and are restricted to a particular lineage and a particular sex. As females do not have a Y-chromosome and males do not pass on their mitochondrial DNA, determining whether members of the opposite sex are related can be a complicated, multi-step process.

No known method exists of combining genetic science and genealogical information to enable identification of biological ancestral relations across multiple earlier generations to a degree that is more accurate than that afforded by mere memory or written records. Thus, a need exists for a combination of genotypical and genealogical disciplines to identify chromosomal fragments that are identical by descent to elucidate family ties between siblings, parents and children, and ancestors and progeny across many generations.

A further need exists for a confluence of genetic science and genealogical resources to corroborate and improve the accuracy of genealogical data pertaining to other than strictly paternal or strictly maternal lines of ancestry.

An additional need yet exists to correlate genetic information with genealogical information to identify previously unknown biological relationships.

DISCLOSURE OF THE INVENTION

An embodiment of the invention includes a computer-implemented system for analyzing relatedness including an expandable database for storing a plurality of hierarchical trees, a first user interface for creating a plurality of data fields within at least one tree of the hierarchical trees and a second user interface for adding genetic data to at least one data field. The computer readable storage medium further includes analytical programming for relating and alterably categorizing each data field. Computational means or executable programming describe a genetic pattern for a first tree and correlating means correlates the genetic pattern of the first tree with a genetic pattern for at least a second tree. The computer readable storage medium further includes computational means or executable programming for predicting an antecedent genetic pattern in the first tree.

In an embodiment of the invention, the database includes a plurality of genetic markers for a plurality of members of a population, genealogical records for each member of the population and analytical programming that can cross-reference the genetic markers and genealogical records. The population may be selected from the group consisting of primate, human, canine, equine, caprine, feline, fowl, bovine, ovine and suid. In one embodiment, the genealogical records comprise at least three successively lineal ancestral familial generations and may include populational origin data of the member. In a preferred embodiment, each member of the

plurality of members of a population, is assigned a unique genetic identifier, having both genetic and genealogical components, such that the genetic markers and genealogical records are stored in association with the unique genetic identifier. In one embodiment, the genetic markers are autosomal and are in linkage disequilibrium.

In another embodiment, a molecular genealogy database comprises genetic markers for each member of a population stored in association with a unique genetic identifier for each member and genealogical records of each member stored in association with said unique genetic identifier for each said member. The database may further comprise analytical programming for cross-referencing and comparing the genetic markers and the genealogical records. The genealogical records may comprise at least three successively lineal ancestral familial generations and may include populational origin data. In another embodiment, the genealogical records may comprise pedigree records. The genetic markers may be autosomal and in linkage disequilibrium.

An embodiment of the invention includes a method of identifying genealogical relationships wherein a database is provided having a genetic data set and a genealogical data set relating to a plurality of members of a species. Analytical means are provided that can associate and analyze the genetic data and genealogical data and thereby infer a previously unknown genealogical relationship. The genetic data may be parsable into haplotypal form.

Another embodiment of the invention includes a method of determining the level of biological relatedness by identifying a plurality of members of a species and identifying at least one compound or complex genetic marker for the plurality of members. While the disclosed method is applicable to any species, the species is human in a preferred embodiment. Genealogical data are identified for the plurality of members and a plurality of groups is created. Each member is categorized into at least one group based on the degree of similarity of the at least one genetic marker such that each defined group has a representative genetic marker. The genealogical data are then compared within each defined group and levels of biological relatedness of said each categorized member is inferred.

A further embodiment of the invention includes a method of correcting a genealogical family tree by identifying genetic data for a plurality of individuals and identifying a genealogical family tree having a plurality of placeholders. Genetic data are identified and compared for each placeholder. Each placeholder is positioned in a unique location within the family tree based on that placeholder's genetic data. Genetic discrepancies are noted among the plurality of placeholders and any placeholders having genetic data outside of a genetic range are designated as anomalous. The genetic data of the plurality of individuals are compared with the genetic data for each placeholder and at least one individual is identified having genetic data within the genetic range. Of the members having data within the genetic range, at least one individual is identified as being a potential placeholder. Finally, the anomalous placeholder is resolved. For example, the anomalous placeholder can be resolved by removing the anomalous placeholder from the family tree or by substituting a potential placeholder for the anomalous placeholder.

Another embodiment of the invention includes a method of determining populational group origin by providing a database of a plurality of family trees, each family tree having a plurality of placeholders. The database is supplemented with genetic data for at least one placeholder thereby creating a genetic genealogy for each family tree. The database is also supplemented with population origin data for at least one

placeholder thereby associating the placeholder's family tree with at least one population origin. A genetic sample is obtained, compared with the genetic data in the database and population origin of the genetic sample is inferred.

A further embodiment of the invention includes a method of determining the level of biological relatedness by identifying a plurality of family trees, members of the plurality of family trees and genetic markers representative of the members. At least one unique genetic marker is identified for each family tree. A genetic sample is obtained and compared with the at least one unique genetic marker. The level of biological relatedness of the genetic sample within at least one family tree is inferred based on the degree of correlation of the genetic sample to the unique genetic marker.

The applications of this invention are not limited to humans. The invention may also be used in similar ways to determine or confirm the pedigree of an animal subject such as, but not limited to, a primate, canine, equine, caprine, feline, fowl, bovine, ovine, or suid.

BRIEF DESCRIPTION OF THE DRAWINGS

FIG. 1 illustrates regions of differential variation in DNA.

FIG. 2 illustrates a system of molecular genealogical research and record keeping including a database having a data set of genealogical data, a data set of genetic data and analytical programming that can analyze and correlate the genealogical data and genetic data.

FIG. 3 depicts how unique genetic identifiers could be used in a traditional genealogical chart.

FIG. 4 is a flow chart of a preferred method of the invention.

FIG. 5 is an example of a unique genetic identifier of the present invention.

FIG. 6 is an example of chromosome reconstruction.

DETAILED DESCRIPTION OF THE INVENTION

A fundamental principle of genetic transmission, that all persons receive genetic material from their biological parents, allows one to determine the origin of genes based on common ancestry and known modes of inheritance. Because this process is repeated every generation, all individuals carry within their DNA a record of who they are and how they are related to all of the other people on the earth. As individuals trace their biological relationships into the past, lineages will begin to "coalesce" into common ancestors.

In order to determine the degree of relatedness between individuals, it is necessary to identify those genetic markers that are identical due to shared ancestry. Different regions of DNA have the ability to identify individuals, link them to immediate family groups, extended family or clan affiliations, and larger populations. For example, FIG. 1 illustrates how specific regions of DNA have properties that can identify an individual's identity (DNA sequences associated with spacer regions), extended family or tribe (possible regulatory regions) and species (structural gene regions). The "structural" region of DNA is under strong selection pressure. As such, very few variations are found among individual members of the same species. By way of contrast, the "spacer" region of DNA is under almost no selection pressure. Therefore, an individual, or a family, can be identified by a unique "spacer" sequence. The "regulatory" region of DNA is under moderate to strong selection pressure; less selection pressure than the "structural" region but more than the "spacer" region.

FIG. 2 illustrates a system of genealogical research and record keeping designated generally 20, including a database 25 which may be stored, for example, in a computer (not

shown). The database 25 can store data sets including genetic data 30 for a plurality of members and corresponding genealogical records 40 extending at least three, and often in excess of 10, successively lineal ancestral familial generations. Preferably, the genetic data 30 includes at least one genetic marker, or chromosomal fragment, that is substantially identical by descent. If more than one genetic marker is included in the genetic data, it is preferable that at least one genetic marker is autosomal. More preferably, the majority of genetic markers are autosomal. The genealogical records, when known, preferably include the given name and surname of each ancestor as well as each ancestor's date and place of birth, thus providing a geographic tie to the genetic data. Genealogical records may also include oral family history information, marriage records or other vital records, military records, wills, land deeds, etc. By examining each ancestor's place of birth, an individual can determine his or her populational origin or ethnicity. The genealogical records may also include any additional information that might be of genealogical or genetic interest, for example, medical history, physical characteristics or personal accomplishments of each ancestor.

The database 25 may be created by obtaining a genetic sample and genealogical information from a plurality of individuals. Analytical programming 50 may associate dates of birth and geographical locations with each genetic sample. A plurality of tests may be performed on the genetic sample to identify an allelic state of the individual at a plurality of loci. The genetic information obtained through analysis of the genetic sample is entered into the database and algorithms are applied to identify the most likely haplotype of the individual. Each individual may have between 50-60 haplotypes based on the analysis of sets of genetic markers. An exemplary algorithm is the Haplotyper developed by Brigham Young University.

Analytical programming 50 cross-references and associates the genetic data 30 and the genealogical records 40. For example, genealogical records 40 can be stored in a hierarchical format similar to a "family tree" wherein each individual, or placeholder, within the family tree is assigned a unique genetic identifier (described herein) (FIG. 3). This unique genetic identifier can also be stored in association with each individual's genetic data 30. A unique identifier can also be assigned to each hierarchical tree.

The hierarchical tree is then analyzed to identify individuals having a shared common ancestor. The genetic data of these identified individuals is then analyzed to identify shared haplotypes. Based on the analysis of the genetic data, the haplotype of the common ancestor may be discerned based on the at least two lines of descent. Thus, the present invention allows the reconstruction of haplotypes for individuals despite lack of a genetic sample.

The database 25 may be a part of a computer readable storage medium or a computer-implemented system for analyzing relatedness that also includes at least one user interface. A first user interface can be used for creating a plurality of data fields. Preferably, the data fields will be located within a hierarchical family tree within the database 25. As an example, the data fields could include genealogical data, including but not limited to medical history information, date of birth, place of birth or other information about each placeholder on a family tree. A second user interface can be used for adding genetic data to the data fields. An example of genetic data includes genetic markers and the haplotype of the individual. Analytical programming relates and alterably categorizes each data field. Computational means or executable programming identify and describe a genetic pattern for a

given data set, for example, a family tree. A genetic pattern might include a genetic marker, or chromosomal fragment, that is identical by descent. Correlating means correlate the genetic pattern for the first family tree with at least a second family tree. Further, computational means or executable programming predict an antecedent genetic pattern in the first family tree, for example, based on a statistical probability of relatedness.

The computer readable storage medium may further comprise computational means or executable programming for annotating a genetic range within a statistical confidence interval for each hierarchical tree. The computational means or executable programming can compare the genetic range of each hierarchical tree with a genetic range of at least one other tree. Further, each hierarchical tree can be stored in the database in association with a unique identifier that reflects the genetic data of members of each tree.

FIG. 4 illustrates a flow chart of a preferred embodiment of the invention. In step 100, a genetic sample is obtained from an individual. Genetic information can be gathered by obtaining a small blood, saliva or hair sample from an individual. DNA is extracted from the sample in the laboratory and specific regions of DNA are amplified using the polymerase chain reaction ("PCR"). In step 110, the PCR products are analyzed for specific genetic markers.

Several methods exist for identifying those genes or markers that are identical due to shared ancestry. Commonly employed genetic systems used to test relatedness are autosomal genes or markers contained on the autosomes (non-sex chromosomes), the Y-chromosome (Y-cs), and mitochondrial DNA (mtDNA). While chromosomes exist in pairs in the nucleus of every cell, mtDNA is more numerous and is located outside the nucleus in the mitochondria. Chromosomes are subject to recombination or shuffling every generation and are not necessarily inherited intact from generation to generation. This characteristic property of genetics introduces the diversity found among peoples and is one of the mechanisms responsible for the unique genetic identity that defines an individual. Y-cs and mtDNA are novel in that they experience limited or no recombination. Y-cs DNA is inherited from father to son and mtDNA is inherited by all children from their biological mother but only passed on through daughters. Each of these systems can be differentially used to answer various questions of genetic interest.

In a preferred embodiment, at least one of the genetic markers is autosomal, thereby increasing the probability in which genealogical relationships may be inferred between two individuals of the opposite sex. Typically at least 250 genetic markers will be examined in each genetic sample. The genetic markers may be grouped in sets of 3-5 genetic markers in linkage disequilibrium. Linkage disequilibrium is a condition where two or more genetic markers are found together in a population at a greater frequency than that predicted simply by the product of their individual gene frequencies. Thus, the presence of a gene at a particular location on a chromosome creates a bias at another location. Analysis of sets of genetic markers in linkage disequilibrium allows the determination of unambiguous haplotypes from the genotypic information at a physical location on a chromosome. By identifying markers that are in linkage disequilibrium, there is a significant increase, as compared with unlinked markers, in determining regions of a chromosome that are inherited from one parent or another.

Those of skill in the art will appreciate that selection of the particular genetic markers examined for each genetic sample is a dynamic process and may expand or contract based on the specific population being analyzed. Thus, the particular

genetic markers examined is not as important as discerning a hereditary pattern among the genetic markers. There are thousands of known simple repeat genetic markers and millions of characterized single nucleotide polymorphisms ("SNP") that may be analyzed in accordance with the present invention. By way of example, Table 1 depicts genetic markers within three haplogroups on chromosome 2 and corresponding primer sequences as identified by the Marshfield Clinic. Other exemplary genetic markers and short tandem repeat ("STR") loci that may be analyzed for chromosomes 1, 2 and 3 are arranged in potential linkage disequilibrium groups and shown in Table 2, Table 3 and Table 4, respectively.

Potential genetic markers may be selected based on their physical location on a chromosome, known polymorphisms and level of polymorphic information content ("PIC"). Preferably, the genetic marker will have a high PIC value and a physical location such that multiple genetic markers are expected to be in linkage disequilibrium. In one embodiment, two to three sets of genetic markers (each set representing at least three genetic markers) per chromosome are targeted and analyzed on each of the 22 autosomal chromosomes.

Genetic markers may also be analyzed on the Y-chromosome and mtDNA. In one embodiment, twenty-three markers on the Y-cs, representing a haplotype and 150 SNP's are analyzed in each genetic sample. Further, in one embodiment, 750 nucleotide of the mtDNA D-loop are sequenced. The sex-linked genetic markers are helpful in segregating a group of individuals into large populations and may be combined with the autosomal genetic markers to further define genetic relationships.

As stated, the specific genetic markers examined in each genetic sample may vary through the data collection process. Initially, known haplogroups on autosomal chromosomes may be analyzed to determine behavior. For example, known haplogroups may be examined against genetic samples from individuals of known genetic relationship to confirm that the genetic markers follow standard Mendelian inheritance patterns. Then, the haplogroups may be run against a large data set (i.e., 25,000 to 100,000 samples) wherein the genetic relationship of the members of the data set are not known. The behavior of the haplogroup within the large data set may provide insight regarding the genetic relationship of members as well as verify the usefulness of the selected haplogroup.

If the individual does not have any known biological ancestors, the process moves to step 120 where he or she is assigned a unique genetic identifier based solely on genetic data 30'. The specific genetic markers for an individual creates genetic data 30' for that individual. Compilation of multiple genetic markers for an individual creates a unique genotype that can be used to assign a unique genetic identifier. In step 150, the individual's genetic data 30' is stored in the database 25 in association with the unique genetic identifier.

In step 160, the individual's genetic data 30' is compared with the genetic data 30 in the database 25 and a genealogical relationship is inferred in step 170 based on the degree of similarity of the data. For example, the genetic data 30 can be categorized into groups such that all members of a group share similar genetic markers. Thus, each defined group has a representative genetic marker. The individual can be assigned to a group based on whether his or her genetic data 30' is statistically similar to the representative genetic marker. Levels of biological relatedness of the members of a group can be inferred based on further similarities and variations of each member's genetic data. Interference of biological relationships and levels of biological relatedness can be further enhanced by cross-referencing each member's genetic data with the corresponding genealogical data. Identification of

biological relationships and level of biological relatedness may allow an individual to identify previously unknown biological relations, populational origin and medical history. Genetic markers may be in haplotype form. Further, the size of each defined group can be limited according to the genealogical or genetic data.

The statistical probability that two people are related can be determined by examination of the similarity of their genetic markers as compared with a larger sample. Preferably, the representative genetic marker is within a predetermined confidence interval. Similarly, the representative genetic marker of each defined group and the genealogical data of each group can be statistically correlated. This analysis permits the level of biological relatedness of each defined group to be statistically correlated and determined.

Once a biological relationship has been inferred, the individual's genetic identifier can be amended to include a genealogical component in step 180. The individual's amended genetic data 30' and previously unknown genealogical data 40' can be stored in the database 25 in association with the individual's unique genetic identifier in step 190.

If, instead, genealogical data are known for the individual, the process moves to step 130 where a unique genetic identifier is assigned that reflects the individual's genealogical data 40' and genetic data 30'. In a preferred embodiment, the unique genetic identifier of step 130 includes three segments (FIG. 5). A first segment reflects a population, and lineage identifier. For example, in FIG. 5, this segment is designated by "AFET" and all individuals of the same population, family or clan share this segment. Each family tree can be identified by this segment of the unique genetic identifier. (FIG. 3). A second segment is the familial relationship identifier. In FIG. 5, this segment is designated MFF822. In this non-limiting example, the individual represented by FIG. 5 would have an ancestor (his/her mother's (M) father (F), father (F)) that had been assigned the number "822". By associating an individual with the number "822", a degree of relatedness may be gleaned. Finally, a third segment reflects the individual genotype as shown by "2179" in FIG. 5. The individual genotype identifier can also be used within a family tree. As shown in FIG. 3, "A.W." has been assigned the genetic identifier "8221754". The genetic identifier is the true, actual "derived" haplotype of the individual with components that relate the individual to others in the database.

FIG. 6 illustrates one embodiment of how a specific genetic identifier is constructed. In one embodiment, the genetic identifier comprises a plurality of numbers wherein each number represents a specific genetic component. FIG. 6 depicts an exemplary chromosome reconstruction wherein an individual possesses a pair of chromosomes; one from his father 602 and one from his mother 604. In the example shown in FIG. 6, eight genetic markers 610, are analyzed representing a first haplogroup 612 and a second haplogroup 614. Preferably, the genetic markers 610 within each haplogroup are in linkage disequilibrium. The size 616 of each genetic marker 610 is determined for a first allele and the combination of sizes represents a specific haplotype 618 of the first allele. The specific haplotype 618 is then assigned a random number shown as "1" in FIG. 6. Thus, all individuals having the same haplotype 618 depicted would be assigned to group "1". In the second allele from the mother, the haplotype 618' is determined by the combination of the sizes of each of genetic marker 610 on the second allele. In the depicted embodiment, the illustrated haplotype is assigned the number "2". This process is repeated for the second haplogroup 614, wherein 5 genetic markers 610 are analyzed and assigned the number "3" for a first allele and "5" for a second allele.

In the illustrated example, an individual assigned a "2" or "5" for a particular allele would be expected to be related to the individual represented in FIG. 6 through the maternal side of the family. As a way of further condensing the genetic identifier, individuals having the combination of "1" and "3" may be assigned to a group represented by number "6". A second group number (shown as "8") may be assigned to individuals having the combination of "2" and "5". Thus, the partial genetic identifier for this individual would be "68". As will be understood, the process of analyzing set of genetic markers on a chromosome is repeated until all of the examined sets are categorized. For example, a third set of genetic markers may result in additional numbers being added to the genetic identifier. Thus, each number within the genetic identifier may correspond to a particular haplotype.

In step 140, the individual's genetic data 30' and genealogical data 40' are stored in the database 25 in association with the individual's genetic identifier. In a preferred embodiment, the genealogical data 40' include the given name and surname, date of birth and place of birth of at least three, preferably four, generations of successively lineal ancestors. Genealogical data 40' can also include information regarding the family medical history or any other known information regarding an ancestor. The genealogical data 40' can be stored in a family tree format wherein the tree and each placeholder on the tree is designated by a unique genetic identifier (FIG. 3). Deceased ancestors are assigned a unique genetic identifier based on a probability statement of the likelihood of the ancestor having a specific haplotype. Analytical programming 50 can retrieve and associate the genetic data 30 and genealogical data 40 corresponding to a particular unique genetic identifier or for a plurality of members of a population.

In step 200, the individual's genealogical records 40' are compared with the genealogical records 40 in the database 25. The comparison could consist, for example, of searching for similar given names and surnames. Analysis of strictly genealogical information may allow the inference of a biological relationship (step 230). Similarly, in step 210, comparison of the individual's genetic data 30' with the genetic data 30 of the database 25 could lead to the identification of a biological relationship (step 240). Preferably, the process progresses to step 220 wherein the individual's genetic data 30' is associated with the individual's genealogical data 40' and then compared with the genetic data 30 and genealogical data 40 in the database 25 by analytical programming 50. In step 300, a biological relationship can be inferred based on the results of the analytical programming 50. In step 310, the individual's genealogical data 40' can be amended to reflect the new biological relationship and stored in the database 25.

The present invention allows identification of biological relationships from two perspectives. First, "gene genealogy" traces descendants from a "founder" individual in the past to the present. Accordingly, the database 25 can be used to identify all descendants from a particular person based on genetic data 30 and genealogical data 40 by following an individual gene or genetic marker from the founder to the present. Thus, the present invention will preserve the genetic heritage of an individual and family for future generations with multiple implications for genealogical and medical progress in the future. Second, an "ascendancy chart" is measured from a living individual to the past and indicates possible contributor's of genes to an individual. In this approach, the database 25 can be used to identify possible ancestors by examining genetic data 30 and genealogical data 40.

The database 25 of the present invention is continually expanding. For example, when a genetic sample is introduced

into the database 25, it is provided a unique genetic identifier, cross-referenced with the existing genetic data 30 and stored in the database 25. If the genetic sample has corresponding genealogical data 40, genealogical data 40 is also added to the database 25. Both the genetic data 30 and genealogical data 40 are updated and amended after new biological relationships are identified. Theoretically, a database 25 having genetic samples from 100,000 individuals, representing 500 populations worldwide, and the corresponding genealogical records 40 of four successively lineal ancestral generations, would be statistically large enough to include or exclude an unknown individual from any of these "populations." Populations can be defined in many ways, including but not limited to, geographically, linguistically or culturally. The correlation of genealogical data provides a time dimension to a population by including the date of birth of ancestors, it allows statistical assignment of genetic markers in a living individual to a location and a date in the past. This unique definition of "population" is used herein.

The present invention can be used to identify previously unknown biological relationships or to confirm, verify or resolve discrepancies in family trees. For example, one embodiment of the invention includes a method of correcting a genealogical family tree. Genetic data for a plurality of individuals is identified. This could include retrieving genetic data 30 from a database 25. A genealogical family tree having a plurality of placeholders is identified which might include retrieving genealogical data 40 from a database 25. The genetic data for each placeholder are identified and compared and each placeholder is placed in a unique location within the tree based on their genetic data. Any genetic discrepancies among the placeholders are noted. For example, the genetic data for one or more placeholders may be outside a genetic range such that it is statistically questionable whether a particular placeholder is genetically related to the rest of the placeholders in the family tree. Any placeholder whose genetic data are outside of a genetic range is designated as anomalous. The genetic data of the plurality of individuals are compared with the genetic data for each placeholder. This could include comparing the genealogical records 40 of the database 25 with the genetic data for each placeholder. In this process, individuals may be identified having genetic data within the genetic range of the family tree. Therefore, it may be inferred that such individuals are potential placeholders within the family tree. The anomalous placeholder must then be resolved. For example, it maybe determined that the anomalous placeholder was improperly included in a family tree in which case, the anomalous placeholder is removed. In other cases, the placeholder may be moved to another location within the family tree. Alternatively, the potential placeholder may be positioned within the family tree.

The present invention can also be used to determine an individual's populational origin or to trace the migration of people through history. The present invention permits determination of the genetic composition of major populations throughout the world and could be used to establish genotypic links in each population and between each population. Further, when genealogical data are associated with genetic data,

it will be possible to examine how quickly genes change and what factors influence change between generations. Individual families will be linked to their ancestral homelands and the contemporary populations that share a common genetic heritage.

The invention could be used to verify family stories, such as that the family is a descendant of George Washington, Abraham Lincoln or another famous person. The invention could also be used to link family trees. For example, two people may be identified as having statistically similar genetic markers. However, it may be determined that it is statistically likely that they only share a common ancestor within a certain number of generations. Based on the variations of their genetic markers, a unique genetic identifier can be created for a "linker" ancestor that estimates the linker ancestor's genotype. Thus, the present invention permits the production of unique identifications for peoples that do not have traditional name-based genealogies. This would allow the reconstruction of DNA based genealogies and extend an understanding of human relationships worldwide.

The present invention also provides a method of determining levels of biological relatedness. A plurality of family trees and members thereof are provided as, for example, in the genealogical data 40 of a database 25. Genetic markers are identified for the members of the family trees. In a preferred embodiment, the genetic markers are stored as genetic data 30 in the database 25 in association with a unique genetic identifier. Genetic markers that are representative of the members are identified. Preferably, the representative genetic markers are within a predetermined confidence interval. At least one unique genetic marker is identified for each family tree. A genetic sample is obtained, assigned a unique genetic identifier and compared with the at least one unique genetic marker. The level of biological relatedness of the genetic sample with at least one family tree can be inferred based on the degree of correlation of the genetic sample and unique genetic marker.

Levels of biological relatedness can be further inferred by statistically correlating the genetic marker(s) within a predetermined confidence interval thereby creating at least one genetically defined group. The defined group can be supplemented with genealogical data and the level of biological relatedness of the defined group can be statistically correlated. The genetic sample can be statistically correlated with the defined group such that genetic sample is identified as a member of at least one defined group.

Although the foregoing description contains many specifics, these should not be construed as limiting the scope of the present invention, but merely as providing illustrations of some exemplary embodiments. Similarly, other embodiments of the invention may be devised which do not depart from the spirit or scope of the present invention. Features from different embodiments may be employed in combination. The scope of the invention is, therefore, indicated and limited only by the appended claims and their legal equivalents, rather than by the foregoing description. All additions, deletions, and modifications to the invention, as disclosed herein, which fall within the meaning and scope of the claims are to be embraced thereby.

TABLE 1

Haplogroup	Marker	d number	Forward primer	Reverse primer
2a	AFMa070we9	D252375	CACTACCCCAGGGTCATCA (SEQ ID NO: 1)	GCTTCAGCCTCAGCACA (SEQ ID NO: 2)
2a	AFM331zg5	D2S387	AGCTCACTTTGGCCTC (SEQ ID NO: 3)	TGGATCTTGGATGTTTCATTC (SEQ ID NO: 4)

TABLE 1-continued

Haplogroup	Marker	d number	Forward primer	Reverse primer
2a	AFM073ya5	D2S305	AATTGCAGCCTGTGAGAGAC (SEQ ID NO: 5)	GCCTCCATAATTGCATGAAC (SEQ ID NO: 6)
2b	AFMc025yh5	D252333	AGAAACCATGCCCTTG (SEQ ID NO: 7)	TGCAGTCACCTGTGTAGAA (SEQ ID NO: 8)
2b	GATA62B10	D251387	TGAGTTTTATTGGCCAAAGC (SEQ ID NO: 9)	TCTTCCATGGATGCTGTCT (SEQ ID NO: 10)
2b	GATA6E12	D252964	GGGAGTGGGGTAAAAA (SEQ ID NO: 11)	CCTCTAACCCCGAGAAATGT (SEQ ID NO: 12)
2c	AFM119xd2	D25127	TTCTGATGTAATCGACTTGC (SEQ ID NO: 13)	CCACCCAAACCTAACAGATA (SEQ ID NO: 14)
2c	GATA26B04	D251326	AGACAGTCAAGAATAACTGCC (SEQ ID NO: 15)	CTGTGGCTCAAAGCTGAAT (SEQ ID NO: 16)
2c	AEM087xg9	D2S122	CAGATTAACCTTCTGCCAGAGAG (SEQ ID NO: 17)	GAGTGCCCTAGATGGAAGGT (SEQ ID NO: 18)

TABLE 2

Marker	Dnumber	GenBank- Num	sex- ave	cM	female	cM	male	cM	het	min	max	1331-01	1331-02	
4	AFM123xc3	D1S2893	Z50993	0	10.78	0	11.2	0	10.21	0.47	201	223	215	201
5	GATA68001	Unknown	G07848	0	10.78	0	11.2	0	10.21	0.6	236	248	244	240
6	AFMa203yc1	D1S2660	Z52466	1.09	10.78	1.1	11.2	1.09	10.21	0.78	253	261	261	253
9	AFMa052wg1	D1S2870	Z51678	0	14.04	0	15.57	0.43	11.96	0.76	190	212	208	208
10	AFMb039zg9	D1S2731	Z53187	0	14.04	0	15.57	0	12.39	0.55	179	185	185	179
11	AFM147yf8	D1S214	Z16669	0.55	14.04	0	15.57	1.09	12.39	0.8	120	142	138	120
12	AFMa210xg9	D1S2663	Z52501	0	14.59	0	15.57	0	13.48	0.84	183	205	201	193
13	AFMa152xg5	D1S2642	Z52295	0	14.59	0	15.57	0	13.48	0.68	180	192	190	182
14	AFM254wb9	D1S253	Z17141	0	14.59	0	15.57	0	13.48	0.47	164	172	166	166
15	GATA23G09	D1S1646	G07800	0.54	14.59	1.08	15.57	0	13.48	0.71	130	150	146	142
18	GGAA3A07	D1S1612	G07863	0	16.22	0	17.77	0	14.55	0.83	94	130	122	102
19	AFMa128ye9	D1S508	Z24634	0	16.22	0	17.77	0	14.55	0.81	73	85	81	79
20	AFMa222ze9	D1S2666	Z52571	4.39	16.22	0.97	17.77	6.49	14.55	0.53	181	193	181	191
21	UT1962	D1S1160	L17927	0	20.61	1.26	18.74	0	21.04	0.73	0	0	0	0
22	AFMa123ya9	D1S503	Z24623	0	20.61	0	20	0	21.04	0.55	203	213	211	207
23	AFM220yf4	D1S244	Z17004	0	20.61	0	20	0	21.04	0.8	285	296	292	292
24	AFM247te9	D1S450	Z23797	0	20.61	0	20	0	21.04	0.81	243	267	255	263
25	AFMb049we9	D1S2736	Z53221	2.74	20.61	2.76	20	2.15	21.04	0.73	122	132	124	124
30	GATA27E01	D1S1597	G07805	0	29.93	0	34.9	0	25.34	0.66	159	179	171	163
31	AFM309ve9	D1S489	Z24279	0	29.93	0	34.9	0	25.34	0.58	141	153	149	143
32	AFM196xb4	D1S228	Z16835	0	29.93	0	34.9	0	25.34	0.76	117	129	119	117
33	AFM217yh8	D1S434	Z23648	0	29.93	0	34.9	0	25.34	0.61	240	252	248	250
34	AFMb067xh5	D1S2740	Z53253	0	29.93	0	34.9	0	25.34	0.66	80	104	100	90
35	AFMb007wb1	D1S2718	Z53054	1.09	29.93	2.2	34.9	0	25.34	0.55	186	204	196	196
38	AFMb032ze1	D1S2728	Z53162	0	33.75	0.03	37.77	0	29.65	0.74	243	255	253	249
39	UT1441	D1S1176	L30905	0	33.75	0.18	37.8	0	29.65	0.65	0	0	0	0
40	UT2127	D1S407	L18040	0	33.75	0.22	37.98	0	29.65	0.7	136	160	0	0
41	AFMa232zb9	D1S2672	Z52632	0	33.75	0	38.2	0	29.65	0.74	142	158	152	154
44	GATA29A05	D1S3669	G07808	0	37.05	0.09	40.32	0	34.04	0.71	179	211	187	183
45	AFMa298yc5	D1S2697	Z52827	0	37.05	0	40.41	0	34.04	0.7	273	281	277	273
46	AFM217zc3	D1S436	Z23650	1.46	37.05	2.58	40.41	0	34.04	0.75	200	240	206	234
50	AFM078yg5	D1S199	Z16534	0	45.33	0	50.41	0	40.52	0.84	94	116	98	96
51	ATA43C09	Unknown	G27276	0	45.33	0	50.41	0	40.52	0.74	127	142	130	127
52	AFM296ze9	D1S483	Z24177	0	45.33	0	50.41	0	40.52	0.45	222	228	226	226
53	GGAT2A07	D1S552	G07868	0	45.33	0	50.41	0	40.52	0.71	244	260	252	244
54	AFMa162zc9	D1S2647	Z52337	1.28	45.33	1.29	50.41	1.24	40.52	0.78	177	193	187	183
57	AFM290vb9	D1S478	Z24089	0	48.53	0	55.58	0	41.76	0.74	155	175	171	155
58	GGAA30B06	Unknown	G15733	0	48.53	0	55.58	0	41.76	0.72	157	201	185	173
59	a134vb1	D1S512	Unknown	0	48.53	0	55.58	0	41.76	0.66	0	0	0	0
60	Mfd293	D1S334	L14300	0	48.53	0	55.58	0	41.76	0.54	305	333	333	333
61	AFMb016yb5	D1S2725	Z53094	0	48.53	0	55.58	0	41.76	0.75	168	182	170	178
62	UT497	D1S378	L18301	0	48.53	0	55.58	0	41.76	0.5	0	0	0	0
63	AFM303tg1	D1S2828	Z51317	0	48.53	0	55.58	0	41.76	0.86	247	279	273	265
64	AFMb040yb1	D1S2732	Z53194	0.54	48.53	1.08	55.58	0	41.76	0.75	256	274	262	256
68	AFM113xc7	D1S458	Z23368	0	52.7	0	61.59	0	44.16	0.71	154	164	164	160
69	AFMb046xa5	D1S2734	Z53211	0	52.7	0	61.59	0	44.16	0.85	108	134	118	112
70	AFMa300wb9	D1S2698	Z52836	0	52.7	0	61.59	0	44.16	0.74	133	141	141	137
71	AFM294zd1	D1S482	Z24142	0	52.7	0	61.59	0	44.16	0.72	177	189	177	183

TABLE 2-continued

Marker	Dnumber	GenBank- Num	sex- ave	cM	female	cM	male	cM	het	min	max	1331-01	1331-02			
72	AFM329zh5	D1S2838	Z51411	0	52.7	0	61.59	0	44.16	0.7	164	176	176	164	172	164
73	AFMa114yd5	D1S2620	Z52099	1.6	52.7	3.67	61.59	0	44.16	0.5	298	104	100	100	100	100
75	GGAA22F10	D1S1676	G07861	0	55.1	0	65.26	0	45.36	0.77	138	162	162	158	158	146
76	GGAA2D04	Unknown	G12421	0	55.1	0	65.26	0	45.36	0.52	158	174	174	170	170	170
77	UT646	D1S1152	L30064	0	55.1	0	65.26	0	45.36	0.64	0	0	0	0	0	0
78	AFMa067xe5	D1S2885	Z51843	0	55.1	0	65.26	0	45.36	0.87	241	263	249	241	259	241
79	AFM200yf12	D1S234	Z16889	1.09	55.1	2.14	65.26	0	45.36	0.82	226	238	234	226	238	226
80	AFM259vc1	D1S455	Z23837	0	56.19	0	67.4	0	45.36	0.81	157	179	171	165	169	163
81	AFMb291wb5	D1S2749	Z53354	0	56.19	0	67.4	0	45.36	0.8	205	225	217	215	213	213
82	UT1928	D1S1177	L30930	0.29	56.19	0.61	67.4	0	45.36	0.64	0	0	0	0	0	0
83	AFMb350zb1	D1S2787	Z53812	0.26	56.48	0.46	68.01	0	45.36	0.76	153	167	165	161	161	161
84	ATA20F08	D1S1622	G09776	0	56.74	0	68.47	0	45.36	0.71	252	270	270	258	261	258
85	AFMa141zb1	D1S2639	Z52262	0	56.74	0	68.47	0	45.36	0.48	261	269	265	265	265	265
86	AFM311ve1	D1S493	Z24299	0	56.74	0	68.47	0	45.36	0.62	134	144	140	140	140	134
87	AFM355te5	D1S2854	Z51524	0	56.74	0	68.47	0	45.36	0.56	178	188	184	184	184	178
88	AFMa133xc5	D1S511	Z24653	0	56.74	0	68.47	0	45.36	0.58	218	230	228	218	226	218
89	AFMa065wd5	D1S2884	Z51818	0	56.74	0	68.47	0	45.36	0.78	158	176	172	164	168	158
90	AFM240za9	D1S449	Z23778	1.09	56.74	2.14	68.47	0	45.36	0.72	221	245	235	235	235	235
91	AFM234tb6	D1S247	Z17038	0	57.83	0	70.61	0	45.36	0.86	243	263	259	249	249	243
92	AFM281xg9	D1S470	Z24000	0	57.83	0	70.61	0	45.36	0.76	155	165	159	155	159	155
93	AFMb346yb5	D1S2781	Z53778	2.18	57.83	3.21	70.61	1.19	45.36	0.86	187	219	191	189	209	193
95	AFM211xa1	D1S241	Z16964	0	61.1	0	75.97	0	46.55	0.56	218	226	222	222	222	220
96	AFM199zd2	D1S233	Z16876	0	61.1	0	75.97	0	46.55	0.85	102	134	130	122	122	116
97	UT2521	D1S1161	L18100	0.55	61.1	1.08	75.97	0	46.55	0.62	0	0	0	0	0	0
100	AFM063xb6	D1S195	Z23319	0	62.2	0	78.12	0	46.55	0.31	183	189	185	185	185	185
101	AFM077xg1	D1S2832	Z50927	0	62.2	0	78.12	0	46.55	0.75	86	100	98	94	88	86
102	AFM094tb7	D1S201	Z16554	0.54	62.2	0	78.12	1.2	46.55	0.7	188	204	188	188	200	194
103	AFM311wb1	D1S2830	Z51334	0	62.74	0	78.12	0	47.75	0.91	190	215	210	205	199	192
104	ATA79C10	Unknown	Unknown	0	62.74	0	78.12	0	47.75	0.8	235	256	250	247	253	244
105	AFMa107wf9	D1S2613	Z52049	0	62.74	0	78.12	0	47.75	0.56	141	151	145	143	147	143
106	AFM269xd5	D1S2783	Z51225	1.64	62.7	42.14	78.12	0.83	47.75	0.68	137	151	151	145	145	137
107	GATA100B09	Unknown	Unknown	0	64.38	0	80.26	0.37	48.58	0.58	205	221	217	213	217	217
108	AFM234xb2	D1S441	Z23718	0	64.38	0	80.26	0	48.95	0.66	164	178	172	170	170	168
109	GATA137F01	Unknown	G15730	0	64.38	0	80.26	0	48.95	0.56	146	166	158	150	162	158
110	UT7270	D1S1190	L30417	0	64.38	0	80.26	0	48.95	0.59	0	0	0	0	0	0
111	AFM329xd5	D1S496	Z24417	0	64.38	0	80.26	0	48.95	0.81	213	239	239	217	229	225
112	AFMa190zc5	D1S2656	Z52417	0	64.38	0	80.26	0	48.95	0.78	182	210	194	182	192	190
113	UT5144	D1S396	L16442	0	64.38	0	80.26	0	48.95	0.79	118	137	0	0	0	0
114	UT865	D1S393	L18452	0	64.38	0	80.26	0	48.95	0.5	0	0	0	0	0	0
115	AFM205xd2	D1S2730	Z51145	0	64.38	0	80.26	0	48.95	0.76	158	174	170	166	172	160
116	ATA7G11	Unknown	G07785	0.54	64.38	1.07	80.26	0	48.95	0.49	159	174	171	159	174	168
118	ATA4E01	Unknown	G15720	0	65.47	0	82.41	0	48.95	0.54	157	169	166	163	163	160
119	AFM260zg5	D1S255	Z17172	0	65.47	0	82.41	0	48.95	0.74	74	88	84	80	84	80
120	AFMa134zc1	D1S2637	Z52231	0	65.47	0	82.41	0	48.95	0.7	233	251	235	235	245	235
121	AFM282zd1	D1S472	Z24014	0	65.47	0	82.41	0	48.95	0.71	228	244	234	234	238	236
122	AFMb013we1	D1S2723	Z53081	1.75	65.47	2.15	82.41	0.6	48.95	0.65	128	144	130	130	142	130
127	AFMb077wg9	D1S2743	Z53285	0	70.41	0	89.98	0	51.36	0.82	168	180	172	168	176	172
128	AFMa083wf5	D1S2892	Z51935	0	70.41	0	89.98	0	51.36	0.89	93	129	109	109	129	107
129	GGAA24E02	Unknown	G07864	0	70.41	0	89.98	0	51.36	0.34	156	176	160	160	168	156
130	HYTM1	Unknown	Unknown	0	70.41	0	89.98	0	51.36	0.81	175	210	190	186	196	190
131	UT7056	D1S1188	L29715	0	70.41	0	89.98	0	51.3	60.58	0	0	0	0	0	0
132	AFMa132wa9	D1S509	Z24642	0	70.41	0	89.98	0	51.3	60.26	69	77	75	75	75	75
133	AFMa191ze9	D1S2657	Z52432	0	70.41	0	89.98	0	51.3	60.87	145	158	150	148	149	147
134	GATA27F07	D1S1598	G07806	0.72	70.41	1.43	89.98	0	51.3	60.56	111	139	123	115	115	111
137	UT862	D1S391	L16340	0	72.59	0	94.27	0	51.3	60.65	0	0	0	0	0	0
138	GATA129H04	D1S3721	G27250	0	72.59	0	94.27	0	51.36	0.88	204	256	232	212	228	216
139	AFM200wh8	D1S2722	Z51133	0	72.59	0	94.27	0	51.36	0.86	195	223	221	219	219	217
140	AFM092xd11	D1S2861	Z50946	0	72.59	0	94.27	0	51.36	0.64	196	202	202	198	198	198
141	GATA65H06	D1S2130	G07846	0.62	72.59	1.23	94.27	0	51.36	0.72	46	262	262	254	254	246
142	AFM154xg11	D1S463	Z23403	0	73.21	0	95.5	0	51.36	0.75	223	233	225	225	233	231
143	AFMa155tg1	D1S2645	Z52324	0	73.21	0	95.5	0	51.36	0.79	259	283	277	273	277	277
144	AFM057xf4	D1S193	Z16490	0	73.21	0	95.5	0	51.36	0.77	94	106	106	100	104	104
145	ACT1B03a	D1S1586	G07765	0.6	73.21	1.22	95.5	0	51.36	0.69	91	118	112	112	91	91
146	AFMa349yb5	D1S2713	Z52990	0	73.81	0	96.72	0	51.36	0.75	253	279	273	269	277	267
147	GGAT4C11	D1S1616	G07871	0	73.81	0	96.72	0	51.36	0.6	137	145	145	141	145	137
148	AFM199zb12	D1S421	Z23494	0	73.81	0	96.72	0	51.36	0.56	146	152	150	148	150	148
149	AFM024xd2	D1S447	Z23291	0	73.81	0	96.72	0	51.36	0.77	123	141	135	129	129	123
150	AFM238vg3	D1S443	Z23737	0	73.81	0	96.72	0	51.36	0.56	310	328	316	314	314	314
151	AFMb044yd9	D1S2733	Z53207	0	73.81	0	96.72	0	51.36	0.72	107	121	115	113	115	115
152	AFM198wa3	D1S231	Z23479	0	73.81	0	96.72	0	51.36	0.45	158	168	162	162	168	162
153	GATA145F08	Unknown	G15731	0	73.81	0	96.72	0	51.36	0.53	223	235	227	227	227	227
154	AFM122xe1	D1S211	Z16622	1.85	73.81	3.8	96.72	0	51.36	0.84	170	198	180	178	192	178
155	Mfd252	D1S319	L14298	0	75.66	0	100.52	0	51.36	0.63	153	161	161	159	159	155
156	AFM291vh5	D1S2824	Z51284	0	75.66	0	100.52	0	51.36	0.65	242	262	248	246	246	242
157	AFMb015wc9	D1S2724	Z53089	0	75.66	0	100.52	0	51.36	0.78	267	287	285	269	283	281
158	GATA72H07	D1S2134	G07853	0	75.66	0	100.52	0	51.36	0.83	257	301	265	265	293	257
159	GATA153G01	Unknown	G15732	0	75.66	0	100.52	0	51.36	0.67	220	236	228	228	228	220

TABLE 2-continued

Marker	Dnumber	GenBank- Num	sex- ave	cM	female	cM	male	cM	het	min	max	1331-01	1331-02			
160	AFM273vd1	D1S2802	Z51236	0	75.66	0	100.52	0	51.36	0.7	192	202	200	198	200	198
161	AFM248tf9	D1S451	Z23799	0	75.66	0	100.52	0	51.36	0.69	174	188	176	176	176	176
162	AFMb286xh9	D1S2748	Z53342	0	75.66	0	100.52	0	51.36	0.82	216	245	238	237	240	234
163	AFMa058we5	D1S2879	Z51745	0	75.66	0	100.52	0	51.36	0.7	78	90	80	80	80	80
164	AFMa244yf5	D1S2677	Z52687	0	75.66	0	100.52	0	51.36	0.76	135	153	145	143	137	137
165	AFMa055xe5	D1S2874	Z51721	0	75.66	0	100.52	0	51.36	0.73	230	240	240	232	232	232
166	AFMb359wd1	D1S2797	Z53878	0	75.66	0	100.52	0	51.36	0.73	148	180	172	168	172	172
167	AFMb009yd9	D1S2720	Z53071	0.61	75.66	0	100.52	1.06	51.36	0.65	235	241	239	237	237	237
168	AFM073xe9	D1S197	Z16522	0	76.27	0	100.52	0	52.42	0.82	115	129	129	123	121	119
169	AFM198ye9	D1S232	Z16859	0	76.27	0	100.52	0	52.42	0.49	184	202	186	186	186	186
170	AFM205zc11	D1S427	Z23558	0	76.27	0	100.52	0	52.42	0.67	275	297	277	277	295	275
171	GTAT1A7	Unknown	G07872	0	76.27	1.98	100.52	0	52.42	0.59	168	184	184	176	180	180
181	AFMa050zc5	D1S2867	Z51647	0	85.68	0	115.09	0	56.7	0.7	164	180	168	168	168	168
182	AFM289yc1	D1S476	Z24081	0	85.68	0	115.09	0	56.7	0.7	159	171	171	165	169	163
183	AFMa082wb5	D1S2890	Z51916	0	85.68	0	115.09	0	56.7	0.81	175	193	187	175	189	175
184	UT419	D1S1150	L36699	0	85.68	0	115.09	0	56.7	0.66	0	0	0	0	0	0
185	AFMa219zc1	0152665	Z52557	1.09	85.68	2.19	115.09	0	56.7	0.76	211	227	225	221	221	219
186	UT2271	01S405	L18729	0	86.77	0	117.28	0	56.7	0.71	243	264	0	0	0	0
187	AFMa183zd9	D1S2650	Z52383	0	86.77	0	117.28	0	56.7	0.63	229	247	237	237	247	237
188	AFMa052wc5	D1S2869	Z51675	0.54	86.77	1.1	117.28	0	56.7	0.79	195	213	209	205	211	195
189	AFMb292zg1	D1S2752	Z53379	0	87.31	0	118.38	0	56.7	0.87	206	248	228	228	226	208
190	AFMa300wg9	D1S2700	Z52839	0	87.31	0	118.38	0	56.7	0.89	174	212	178	176	186	180
191	AFMa163tg1	D1S2648	Z52345	0	87.31	0	118.38	0	56.7	0.66	275	289	287	285	289	281
192	AFM162xg3	D1S220	Z16721	0.22	87.31	0.37	118.38	0	56.7	0.83	231	251	247	233	245	235
197	AFMa054wa9	D1S2873	Z51705	0	89.49	0	121.68	0.6	57.17	0.68	212	224	220	218	224	218
198	GATA165C03	D1S3728	G27281	0	89.49	0	121.68	0	57.77	0.74	244	268	264	264	260	252
199	GATA26G09	D1S1596	G07804	1.09	89.49	1.09	121.68	1.06	57.77	0.63	109	121	117	113	117	109
204	AFMb351xc9	D1S2788	Z53816	0	93.86	0	126.07	0	62.04	0.81	203	219	215	211	217	211
205	AFM286xd9	D1S473	Z24046	0	93.86	0	126.07	0	62.04	0.82	235	259	245	243	243	243
206	AFM120xd4	D1S209	Z16616	1.45	93.86	1.65	126.07	1.06	62.04	0.8	149	169	165	157	165	161
208	AFM220yc7	D1S438	Z23669	0	96.04	0	129.38	0	63.1	0.88	156	174	172	170	170	162
209	AFM225zg7	D1S246	Z17036	0	96.04	0	129.38	0	63.1	0.76	200	224	220	216	214	200
210	AFMa140yh1	D1S2638	Z52260	0	96.04	0	129.38	0	63.1	0.82	224	244	232	230	230	226
211	AFM323xa9	D1S2835	Z51377	1.45	96.04	1.65	129.38	1.07	63.1	0.86	167	195	187	177	177	169
214	AFM292zf5	D182825	Z51292	0	98.21	0	132.67	0	64.17	0.61	166	184	170	166	166	166
215	AFMa273zb1	D1S2684	Z52732	0	98.21	0	132.67	0	64.17	0.62	125	135	129	125	129	125
216	AFMa112zd5	D1S2617	Z52083	0	98.21	0	132.67	0	64.17	0.46	234	246	240	240	240	240
217	AFMa070wd9	D1S2886	Z51850	0	98.21	0	132.67	0	64.17	0.42	177	187	185	185	185	185
218	AFMb301xd1	D1S2754	Z53437	0	98.21	0	132.67	0	64.17	0.58	160	172	164	160	160	160
219	ATA52G05	Unknown	G27341	0	98.21	0	132.67	0	64.17	0.81	219	240	228	219	240	237
220	AFMa050td5	D1S2866	Z51638	0	98.21	0	132.67	0	64.17	0.58	277	287	283	281	283	283
221	AFMa346we5	D1S2710	Z52971	1.09	98.21	0	132.67	2.13	64.17	0.6	217	225	223	221	223	223
223	AFM303vc5	D1S2829	Z51318	0	100.39	0	134.86	0	66.3	0.86	199	225	215	201	209	209
224	AFMc006xb5	D1S2806	Z53944	0	100.39	0	134.86	0	66.3	0.78	147	163	155	153	153	151
225	UT2152	D1S1180	L18727	0	100.39	0	134.86	0	66.3	0.49	0	0	0	0	0	0
226	UT2341	D1S410	L18739	0	100.39	0	134.86	0	66.3	0.79	317	351	0	0	0	0
227	UT415	D1S368	L18262	1.09	100.39	2.19	134.86	0	66.3	0.66	0	0	0	0	0	0
228	AFM016xh3	D1S411	Z23283	0	101.48	0	137.05	0	66.3	0.62	194	204	204	196	204	198
229	GATA26C12	D1S1648	G07803	0	101.48	0	137.05	0	66.3	0.28	177	189	189	185	189	185
230	AFMb361yd5	D1S2803	Z53896	0	101.48	0	137.05	0	66.3	0.64	188	212	190	188	190	190
231	AFM126xa1	D1S462	Z23381	0	101.48	0	137.05	0	66.3	0.45	238	244	238	238	240	238
232	UT2062	D1S1178	L17961	0	101.48	0	137.05	0	66.3	0.63	0	0	0	0	0	0
233	AFM161xb2	D1S219	Z16714	0.54	101.48	0	137.05	1.07	66.3	0.82	154	176	170	168	170	160
234	AFM051xh8	D1S192	Z16482	0	102.02	0	137.05	0	67.37	0.66	203	211	207	207	205	205
235	UT7726	D1S1195	L30336	0	102.02	0	137.05	0	67.37	0.66	0	0	0	0	0	0
236	AFMa102wf9	D1S2897	Z52012	0	102.02	0	137.05	0	67.37	0.78	237	251	247	243	239	239
237	UT5492	D1S1162	L18113	0	102.02	0	137.05	0	67.37	0.6	0	0	0	0	0	0
238	AFM240wb4	D1S448	Z23762	0	102.02	0	137.05	0	67.37	0.41	209	215	213	209	213	211
239	GATA61A06	D1S1665	G07838	0	102.02	0	137.05	0	67.37	0.74	219	239	235	223	231	227
240	AFMa099wc1	D1S2895	Z51992	0	102.02	0	137.05	0	67.37	0.77	205	215	211	207	213	205
241	GATA124B02	Unknown	Unknown	0	102.02	0	137.05	0	67.37	0.63	182	198	190	186	190	186
242	GATA152F05	Unknown	G27298	0	102.02	0	137.05	0	67.37	0.7	232	244	240	240	236	232
243	AFM319zh9	D1S494	Z24359	0	102.02	0	137.05	0	67.37	0.44	177	187	181	181	187	181
244	AFM179yg3	D1S224	Z16787	0	102.02	0	137.05	0	67.37	0.64	120	130	128	124	128	124
245	AFM359tb5	D1S501	Z24607	0	102.02	0	137.05	0	67.37	0.64	172	178	176	172	178	176
246	AFMb359xe9	D1S2798	Z53880	2.21	102.02	2.14	137.05	2.39	67.37	0.75	158	178	170	168	166	166
247	GAAT1D9	D1S532	G07787	0	104.23	0	139.19	0	69.76	0.44	117	133	129	117	129	129
248	AFM270vc9	D1S464	Z23928	0	104.23	0	139.19	0	69.76	0.82	101	121	119	111	117	105
249	AFM355th1	D1S2855	Z51526	0	104.23	0	139.19	0	69.76	0.8	226	270	232	228	226	226
250	AFMb314yc1	D1S2761	Z53508	0	104.23	0	139.19	0	69.76	0.65	237	249	241	237	241	237
251	AFM294wg1	D1S481	Z24136	0.56	104.23	0	139.19	1.26	9.76	0.82	235	253	251	239	249	239
252	GGAA10G11	Unknown	G09267	0	104.79	0	139.19	0	70.96	0.72	214	238	222	218	222	218
253	GATA193D02	Unknown	G27334	0	104.79	0	139.19	0	70.96	0.74	150	170	162	162	158	158
254	AFMa107ya9	D1S2614	Z52052	0	104.79	0	139.19	0	70.96	0.81	257	268	264	262	268	266
255	AFM154xc7	D1S216	Z16686	0	104.79	0	139.19	0	70.96	0.88	228	260	252	234	242	242
256	AFM338wb5	D1S499	Z24550	0.66	104.79	0.88	139.19	0.4	70.96	0.85	194	206	202	197	206	197
260	AFM343vf9	D1S500	Z24561	0	107.56	1.65	141.34	0	73.35	0.64	167	181	179	177	177	169

TABLE 2-continued

Marker	Dnumber	GenBank- Num	sex- ave	cM	female	cM	male	cM	het	min	max	1331-01	1331-02			
261	AFM270zf5	D1S465	Z23935	0	107.56	0	142.99	0	73.35	0.68	207	227	225	225	219	
262	ATA104E04	Unknown	Unknown	1.48	107.56	1.43	142.99	0	73.35	0.65	161	179	170	161	176	170
265	AFM116xb2	D1S207	Z16601	0	113.69	0	151.07	0	76.96	0.84	142	170	170	156	148	148
266	UT1383	D1S1159	L17884	0	113.69	0	151.07	0	76.96	0.73	340	377	0	0	0	0
267	AFM356tb9	D1S2856	Z51527	0	113.69	0	151.07	0	76.96	0.5	257	263	261	259	261	259
268	AFMa060yh9	D1S2882	Z51774	0	113.69	0	151.07	0	76.96	0.8	224	237	224	224	231	226
269	AFM080xd3	D1S454	Z23340	0	113.69	0	151.07	0	76.96	0.56	155	163	159	157	161	159
270	AFMa047zd9	D1S2862	Z51618	0	113.69	0	151.07	0	76.96	0.76	258	272	266	258	266	264
271	AFMb335xb5	D1S2774	Z53696	0	113.69	0	151.07	0	76.96	0.64	120	130	128	124	128	124
272	GATA6A05	D1S551	G07849	0	113.69	0	151.07	0	76.96	0.67	166	186	178	174	186	178
273	AFM184xe11	D1S226	Z16801	0.14	113.69	0.44	151.07	0	76.96	0.82	90	106	102	90	104	92
275	UT494	D1S375	L16267	0	114.24	0	152.14	0	76.96	0.58	0	0	0	0	0	0
276	ATA104H01	Unknown	Unknown	0	114.24	0	152.14	0	76.96	0.77	115	139	136	124	133	130
277	AFM299ze9	D1S488	Z24207	0	114.24	0	152.14	0	76.96	0.76	181	205	202	190	199	196
278	AFMc008yc5	D1S2807	Z53960	2.48	114.24	5.07	152.14	0	76.96	0.73	184	192	190	188	188	188
279	AFMa081xe9	D1S2889	Z51910	0	116.72	0	157.21	0	76.96	0.6	173	185	179	177	179	179
280	UT967	D1S1541	L18487	0	116.72	0	157.21	0	76.96	0.54	0	0	0	0	0	0
281	GATA65B07	Unknown	G07844	1.42	116.72	1.68	157.21	1.07	76.96	0.66	147	167	159	155	155	155
285	AFM183yg7	D1S415	Z23441	0	125.51	2.58	164.85	0	84.24	0.33	197	201	199	199	201	199
286	ATA2E04	D1S1588	G07780	0	125.51	0	167.43	0	84.24	0.65	118	139	133	118	136	118
287	AFM217zb2	D1S435	Z23649	0.65	125.51	0	167.43	1.29	84.24	0.73	157	177	161	157	157	157
288	Mfd246	D1S188	M98987	0	126.16	0	167.43	0	85.53	0.86	151	173	167	155	165	151
289	AFMa051wg9	D1S2868	Z51655	0	126.16	0	167.43	0	85.53	0.77	144	154	150	148	148	146
290	AFM350tg9	D1S2849	Z51509	0	126.16	0	167.43	0	85.53	0.79	174	184	182	177	179	179
291	AFM265xh1	D1S2776	Z51216	0	126.16	0	167.43	0	85.53	0.75	196	212	198	196	206	196
292	UT2069	D1S406	L18038	0	126.16	0	167.43	0	85.53	0.66	0	0	0	0	0	0
293	AFMb339za9	D1S2779	Z53729	0	126.16	0	167.43	0	85.53	0.81	229	247	233	231	241	233
294	AFM203vd4	D1S424	Z23523	0	126.16	0	167.43	0	85.53	0.73	195	229	209	209	225	223
295	AFMb363xf9	D1S2804	Z53914	2.57	126.16	2.87	167.43	2.13	85.53	0.75	179	195	185	185	191	179
296	AFM199xb6	D1S420	Z23492	0	128.73	0	170.3	0	87.66	0.73	199	213	205	205	213	205
297	ATA1D01	D1S1587	G07767	0	128.73	0	170.3	0	87.66	0.54	144	168	153	153	153	144
298	UT851	D1S1170	L18448	0	128.73	0	170.3	0	87.66	0.49	0	0	0	0	0	0
299	AFM205ta11	D1S236	Z16908	0.64	128.73	1.42	170.3	0	87.66	0.73	190	216	212	212	212	212
300	GATA124C08	Unknown	G15725	0	129.37	0	171.72	0	87.66	0.67	143	163	155	151	155	147
301	AFM331vb1	D1S497	Z24425	0	129.37	0	171.72	0	87.66	0.81	250	278	260	260	270	260
302	AFMb297xe1	D1S2753	Z53412	0	129.37	0	171.72	0	87.66	0.74	207	221	213	211	215	211
303	UT5782	D1S1163	L18153	0	129.37	0	171.72	0	87.66	0.58	0	0	0	0	0	0
304	AFM200wf6	D1S2719	Z51132	0	129.37	0	171.72	0	87.66	0.66	274	302	290	274	294	292
305	AFMb354xd9	D1S2793	Z53845	0	129.37	0	171.72	0	87.66	0.77	194	208	196	196	202	196
306	AFM261ze9	D1S2775	Z51213	0	129.37	0	171.72	0	87.66	0.52	195	201	199	199	201	195
307	AFM164wh2	D1S2664	Z51062	0	129.37	0	171.72	0	87.66	0.73	240	254	248	248	250	240
308	AFMc026yfl	D1S2819	Z54054	0	129.37	0	171.72	0	87.66	0.77	166	182	182	172	166	166
309	AFMc015ze1	D1S2813	Z54009	1.36	129.37	1.61	171.72	1.07	87.66	0.72	185	205	203	191	203	201
312	ATA27F04	D1S1629	G07777	0	131.87	0	174.94	0	88.73	0.34	196	208	196	196	205	196
313	GATA4H05	D1S540	G07830	0	131.87	0	174.94	0	88.73	0.14	152	156	152	152	156	152
314	AFMc008za9	D1S2808	Z53961	0.6	131.87	0.67	174.94	2.16	88.73	0.68	222	232	228	228	232	222
316	AFM297zg1	D1S486	Z24191	0	134.2	0	176.02	0	93.04	0.44	214	222	222	218	220	220
317	AFM168yb2	D1S223	Z16765	0	134.2	0	176.02	0	93.04	0.76	252	264	260	256	264	258
318	UT667	D1S1154	L31740	0	134.2	0	176.02	0	93.04	0.63	0	0	0	0	0	0
319	AFMa102wd9	D1S2896	Z52010	0	134.2	0	176.02	0	93.04	0.73	157	173	163	157	161	161
320	AFM113xf6	D1S206	Z16595	0	134.2	0	176.02	0	93.04	0.82	206	218	206	206	208	206
321	UT5210	D1S1174	L17731	0	134.2	0	176.02	0	93.04	0.81	200	235	0	0	0	0
322	GATA67E04	D1S1671	G07847	0	134.2	0	176.02	0	93.04	0.53	218	234	218	222	226	222
323	AFMa230ze1	D1S2671	Z52622	2.14	134.2	1.07	176.02	3.21	93.04	0.72	170	186	182	182	182	178
327	ATA29D04	D1S1631	G07781	0	136.88	0	177.09	0	97.33	0.77	129	156	150	135	150	135
328	AFMa073zb1	D1S2888	Z51884	0	136.88	0	177.09	0	97.33	0.74	129	143	139	129	143	139
329	AFMb313wd1	D1S2759	Z53497	0	136.88	0	177.09	0	97.33	0.61	231	243	243	241	241	241
330	GATA113H03	Unknown	Unknown	0	136.88	0	177.09	0	97.33	0.72	249	269	253	253	261	253
331	AFM207yg1	D1S429	Z23582	0	136.88	0	177.09	0	97.33	0.74	213	225	223	217	217	217
332	AFM297xf9	D1S485	Z24185	0	136.88	0	177.09	0	97.33	0.62	157	181	157	157	157	157
333	AFM323ya5	D1S495	Z24389	0.71	136.88	1.44	177.09	0	97.33	0.87	138	164	164	150	148	146
335	AFM205yg3	D1S239	Z16924	0	139.02	0	181.41	0	97.33	0.71	242	258	244	242	256	248
336	AFM186xg7	D1S2688	Z51095	0	139.02	0	181.41	0	97.33	0.6	92	96	94	92	96	92
337	ATA25E07	D1S1627	G07776	0	139.02	0	181.41	0	97.33	0.7	104	119	116	113	113	104
338	AFM234vb4	D1S248	Z17045	0	139.02	0	181.41	0	97.33	0.8	191	211	199	197	197	191
339	ATA42G12	Unknown	G15719	1.37	139.02	1.61	181.41	1.07	97.33	0.75	178	196	190	187	190	187
345	AFM084xb3	D1S457	Z23345	0	143.31	0	186.77	0	100.54	0.74	199	214	210	199	212	212
346	AFMa339zf5	D1S2708	Z52935	0	143.31	0	186.77	0	100.54	0.64	171	181	179	175	179	177
347	AFMa296we9	D1S2695	Z52811	1.07	143.31	2.15	186.77	0	100.54	0.75	105	131	129	105	129	123
354	UT7380	D1S1191	L30435	0	147.6	0	193.21	0	102.68	0.57	0	0	0	0	0	0
355	AFM197yg1	D1S418	Z23477	0	147.6	0	193.21	0	102.68	0.8	176	190	186	182	186	184
356	AFMb283wf1	D1S2746	Z53318	0	147.6	0	193.21	0	102.68	0.81	134	156	134	134	152	146
357	AFMb305ze9	D1S2756	Z53460	0	147.6	0	193.21	0	102.68	0.33	193	209	195	195	207	195
358	AFM351wb1	D1S2852	Z51517	0	147.6	0	193.21	0	102.68	0.72	246	278	274	246	270	246
359	AFM298vc5	D1S487	Z24192	1.07	147.6	1.07	193.21	1.06	102.68	0.71	260	266	266	260	262	262
362	AFM277yf9	D1S467	Z23985	0	149.2	0	195.36	0	103.74	0.68	167	177	175	167	169	167
363	AFM207xc5	D1S2744	Z51160	0	149.2	0	195.36	0	103.74	0.7	199	213	209	205	209	207

TABLE 2-continued

Marker	Dnumber	GenBank- Num	sex- ave	cM	female	cM	male	cM	het	min	max	1331-01	1331-02			
364	GGAA20F08	D1S1675	G07860	0	149.2	0	195.36	0	103.74	0.61	227	251	235	235	235	235
365	AFM036xc5	D1S189	Z16458	0	149.2	0	195.36	0	103.74	0.78	124	136	134	132	136	128
366	AFMa282vd9	D1S2687	Z52749	1.07	149.2	2.15	195.36	0	103.74	0.68	157	167	165	163	157	157
368	AFMc026yh5	D1S2820	Z54056	0	150.81	0	198.58	0	103.74	0.5	249	253	251	249	251	251
369	AFMb349wg5	D1S2784	Z53800	0	150.81	0	198.58	0	103.74	0.69	198	208	204	202	204	200
370	AFM234wc9	D1S440	Z23714	0.3	150.81	0.64	198.58	0	103.74	0.61	135	141	137	137	139	137
374	AFM093xc5	D1S2863	Z50949	0	151.88	0	200.73	0	103.74	0.61	194	202	198	196	198	198
375	Mfd215	D1S185	M98984	0	151.88	0	200.73	0	103.74	0.62	114	128	124	124	124	124
376	GATA12A07	D1S534	G07791	0.57	151.88	1.12	200.73	0	103.74	0.83	196	212	210	208	206	206
381	AFMa046wd9	D1S2343	Z51597	0	155.89	0	205.24	0	107.29	0.7	242	268	256	242	256	256
382	AFM336xb1	D1S498	Z24441	0	155.89	0	205.24	0	107.29	0.82	183	205	195	191	191	189
383	AFM135yc3	D1S2612	Z51001	0	155.89	0	205.24	0	107.29	0.46	251	261	255	251	251	251
384	AFMc002wf5	D1S2345	Z53925	0	155.89	0	205.24	0.29	107.29	0.8	137	155	145	139	145	145
385	AFM291xh1	D1S2347	Z51288	0	155.89	0	205.24	0.57	107.58	0.5	268	294	294	272	284	268
386	UT864	D1S1156	L36705	2.86	155.89	4.53	205.24	0.32	108.15	0.65	0	0	0	0	0	0
388	AFM220xf8	D1S305	Z17260	0	159.32	0	210.91	0	108.47	0.83	156	176	170	160	170	160
389	AFM361tb9	D1S2858	Z51536	0	159.32	0	210.91	0	108.47	0.5	125	129	129	129	129	127
390	AFMa357ze5	D1S2715	Z53023	0.46	159.32	1.28	210.91	0	108.47	0.72	150	168	166	162	152	152
392	AFM081zce5	D1S303	Z17247	0	161.05	0	214.34	0	108.47	0.54	181	191	187	187	191	187
393	UT666	D1S1153	L31738	0	161.05	0	214.34	0	108.47	0.92	283	328	0	0	0	0
394	UT2150	D1S1179	L17981	0	161.05	0	214.34	0	108.47	0.57	0	0	0	0	0	0
395	GATA25B02	D1S1595	G07801	0	161.05	0	214.34	0	108.47	0.75	265	293	281	265	289	265
396	UT455	D1S2222	L16256	0	161.05	0	214.34	0	108.47	0.34	0	0	0	0	0	0
397	AFMa351wd1	D1S2714	Z53001	0	161.05	0	214.34	0	108.47	0.61	172	182	178	176	178	178
398	AFMb337zh1	D1S2777	Z53720	0	161.05	0	214.34	0	108.47	0.64	252	274	264	258	262	260
399	AFMb009zb9	D1S2721	Z53073	1.52	161.05	3.36	214.34	0	108.47	0.74	233	247	241	233	243	233
406	AFMa133ye5	D1S2635	Z52215	0	165.62	0	221.09	0	110.83	0.86	142	159	151	148	153	151
407	UT1234	D1S398	L15545	0	165.62	0	221.09	0	110.83	0.66	0	0	0	0	0	0
408	UT6608	D1S1187	L30626	0	165.62	0	221.09	0	110.83	0.47	0	0	0	0	0	0
409	Mfd57	CRP	M11880	0	165.62	0	221.09	1.48	110.83	0.59	0	0	0	0	0	0
410	SPTA1	Unknown	X57979	2.9	165.62	3.21	221.09	1.19	112.31	0.64	0	0	0	0	0	0
411	AFMb334xb1	D1S2771	Z53685	0	168.52	0	224.3	0	113.5	0.72	243	259	257	251	251	243
412	AFMa339wh1	D1S2707	Z52929	0	168.52	0	224.3	0	113.5	0.82	137	159	157	155	151	137
413	N1B1152	D1S1167	T16342	0	168.52	0	224.3	0	113.5	0.84	165	183	177	165	179	165
414	ATA73A08	Unknown	Unknown	1.16	168.52	2.13	224.3	0	113.5	0.65	114	141	138	126	135	126
416	AFMa323xd9	D1S2705	Z52900	0	170.84	0.59	226.91	0	114.83	0.76	148	162	162	150	154	152
417	GGAA5F09	D1S1679	G09435	0	170.84	0	227.5	0	114.83	0.84	144	172	164	148	168	148
418	AFMa244wh5	D1S2675	Z52679	0	170.84	0	227.5	0	114.83	0.73	160	174	166	162	166	164
419	Mfd3	AP0A2	X00927	2.09	170.84	1.61	227.5	1.91	114.83	0.76	131	145	143	143	137	133
422	Mfd67	D1S104	X54586	0	175.62	0	230.72	0	121.47	0.7	0	0	0	0	0	0
423	UT2089	D1S403	L17970	0	175.62	0	230.72	0	121.47	0.66	0	0	0	0	0	0
424	UT1398	D1S400	L16399	0	175.62	0	230.72	0	121.47	0.64	0	0	0	0	0	0
425	GGAA22G10	D1S1677	G09926	2.24	175.62	3.2	230.72	0.88	121.47	0.68	188	208	204	196	200	196
426	AFM205xh2	D1S426	Z23552	0	177.86	0	233.92	0.29	122.35	0.56	132	158	156	142	142	142
427	AFMa129zf5	D1S2630	Z52190	0	177.86	0	233.92	0	122.64	0.5	264	272	264	264	270	264
428	AFMa125ze5	D1S2628	Z52173	0	177.86	0	233.92	0	122.64	0.7	115	123	123	115	119	117
429	UT591	D1S382	L16289	0	177.86	0	233.92	0	122.64	0.6	0	0	0	0	0	0
430	AFMa057ze5	D1S2878	Z51743	0.56	177.86	0	233.92	1.16	122.64	0.84	169	195	191	177	177	173
431	AFMa239ydl	D1S2673	Z52651	0	178.42	0	233.92	0	123.8	0.69	102	112	108	106	108	102
432	ATA38A05	Unknown	G15718	0	178.42	0	233.92	0.49	123.8	0.74	164	188	182	164	176	176
433	AFM057xf8	D1S194	Z16491	0.68	178.42	0	233.92	0.68	124.29	0.65	233	239	235	233	239	233
434	AFMa247xd1	D1S2681	Z52712	0	179.1	0	233.92	0	124.97	0.75	205	223	213	211	215	215
435	UT1230	D1S1158	L17772	0	179.1	0	233.92	0	124.97	0.62	0	0	0	0	0	0
436	AFMb316zb9	D1S2762	Z53529	2.39	179.1	2.87	233.92	2.33	124.97	0.81	232	250	242	240	250	232
438	AFMb292xb1	D1S2750	Z53371	0	182.35	0	238.23	0	127.3	0.66	102	118	112	102	112	112
439	Mfd147	D1S318	L14301	0	182.35	0	238.23	0	127.3	0.74	154	178	172	168	178	154
440	AFM238xf10	D1S445	Z23745	0	182.35	0	238.23	0	127.3	0.61	146	156	152	146	156	152
441	UT1089	D1S397	L18532	0	182.35	0	238.23	0	127.3	0.56	0	0	0	0	0	0
442	AFM212xf6	D1S431	Z23618	0.84	182.35	0.24	238.23	1.07	127.3	0.79	207	221	215	213	213	213
447	UT6271	D1S1165	L30740	0	188.32	0	243.61	0	133.78	0.9	145	210	0	0	0	0
448	ATA14D03	D1S1619	G07768	0	188.32	0	243.61	0	133.78	0.6	179	200	185	185	185	185
449	AFM350yh1	D1S2851	Z51512	0.53	188.32	1.07	243.61	0	133.78	0.83	169	199	191	187	197	187
450	AFMc018yd9	D1S2815	Z54019	0	188.85	0	244.68	0	133.78	0.83	210	237	237	220	237	224
451	AFM248wg5	D1S452	Z23809	0	188.85	0	244.68	0	133.78	0.76	217	227	225	221	225	223
452	AFM122xa3	D1S210	Z16619	2.13	188.85	1.07	244.68	3.21	133.78	0.66	117	125	121	117	121	121
456	AFMb328yg5	D1S2769	Z53636	0	192.05	0	245.75	0	139.12	0.63	213	233	231	227	231	227
457	AFM290yf9	D1S480	Z24098	0	192.05	0	245.75	0	139.12	0.66	198	206	206	200	206	198
458	AFM185xd6	D1S416	Z23445	0	192.05	0	245.75	0	139.12	0.82	146	162	152	146	150	146
459	AFMa285zd5	D1S2691	Z52780	0	192.05	0	245.75	0	139.12	0.83	249	267	259	253	265	261
460	AFM115yc3	D1S2887	Z50984	0	192.05	0	245.75	0	139.12	0.7	173	187	179	173	177	173
461	AFM278ye5	D1S2814	Z51249	0	192.05	0	245.75	0	139.12	0.6	267	281	271	269	271	269
462	AFMa203yb9	D1S2659	Z52465	0	192.05	0	245.75	0	139.12	0.76	202	216	214	202	212	202
463	AFMa152zf5	D1S2643	Z52298	0	192.05	0	245.75	0	139.12	0.74	172	194	176	176	182	182
464	ATA4E02	D1S1589	G07783	0	192.05	0	245.75	0	139.12	0.77	199	217	205	202	214	205
465	UT417	D1S370	L18264	0	192.05	0	245.75	0	139.12	0.6	0	0	0	0	0	0
466	GATA12F01	Unknown	G09202	0.85	192.05	2.41	245.75	0	139.12	0.62	152	172	168	168	172	164
471	AFMa143wd5	D1S2640	Z52276	0	194.89	0	249.37	0	141.26	0.77	188	204	198	192	202	190

TABLE 2-continued

Marker	Dnumber	GenBank- Num	sex- ave	cM	female	cM	male	cM	het	min	max	1331-01	1331-02			
472	AFM150xh4	D1S215	Z16674	0	194.89	0	249.37	0	141.26	0.71	189	207	203	197	199	193
473	AFMb292zb9	D1S2751	Z53375	0	194.89	0	249.37	0	141.26	0.71	236	246	238	236	242	242
474	AFMa061xc5	D1S2883	Z51783	3.41	194.89	3.63	249.37	3.2	141.26	0.77	179	199	193	181	195	191
475	AFMa116yc5	D1S2623	Z52114	0	198.3	0	253	0	144.46	0.58	282	290	290	284	286	282
476	AFMa114wg1	D1S2619	Z52092	0	198.3	0	253	0	144.46	0.64	182	194	188	188	188	184
477	AFMc025xh9	D1S2818	Z54047	0	198.3	0	253	0	144.46	0.7	255	265	255	255	265	255
478	AFM275xe1	D1S466	Z23954	1	198.3	0	253	1.61	144.46	0.77	157	175	157	157	165	157
479	AFMa302yg5	D1S2701	Z52856	0	199.3	0	253	0	146.07	0.54	125	133	129	129	129	127
480	LAMB2	Unknown	S77512	1	199.3	0	253	1.6	146.07	0.63	0	0	0	0	0	0
481	GATA12F10	D1S2127	G07795	0	200.3	0	253	0	147.67	0.7	112	132	124	120	124	120
482	AFM207vh8	D1S240	Z16934	0.66	200.3	1.87	253	0	147.67	0.62	236	242	236	236	236	236
483	GATA84H01	D1S2138	G07855	0	200.96	0	254.87	0	147.67	0.61	237	245	241	241	245	237
484	AFM078xh3	D1S444	Z23332	0	200.96	0	254.87	0	147.67	0.6	172	180	180	176	178	176
485	AFM046xh10	D1S191	Z16475	0	200.96	0	254.87	0	147.67	0.73	153	169	163	161	169	161
486	UT7705	D1S1194	L30311	0	200.96	0	254.87	0	147.67	0.56	0	0	0	0	0	0
487	AFM260xfl	D1S254	Z17166	0	200.96	0	254.87	0	147.67	0.67	198	208	208	204	202	198
488	AFM348tg1	D1S2848	Z51502	0.62	200.96	0	254.87	1.07	147.67	0.82	105	123	121	121	119	109
489	AFM164yg1	D1S222	Z16740	0	201.58	0	254.87	0	148.74	0.7	258	276	274	270	258	258
490	GATA23B04	D1S1642	G07797	0	201.58	0	254.87	0	148.74	0.7	250	270	262	262	262	258
491	AFM095ta5	D1S202	Z16557	0	201.58	0	254.87	0	148.74	0.77	77	91	85	81	89	87
492	AFMa348yd5	D1S2711	Z52983	0	201.58	0	254.87	0	148.74	0.58	153	161	161	153	161	155
493	ATA23E12	Unknown	G07772	0.61	201.58	1.54	254.87	0	148.74	0.77	236	257	254	251	251	248
497	GATA51H01	D1S3470	G07835	0	204.51	0	259.08	0	150.87	0.81	273	313	309	281	273	273
498	AFM123yc7	D1S461	Z23380	0	204.51	0	259.08	0	150.87	0.66	234	246	246	240	234	234
499	AFM206xd6	D1S428	Z23562	0.89	204.51	1.6	259.08	0	150.87	0.55	181	195	195	183	181	181
500	UT7117	D1S1189	L29737	0	205.4	0	260.68	0	150.87	0.64	0	0	0	0	0	0
501	GATA193H05	Unknown	G27288	0	205.4	0	260.68	0	150.87	0.81	218	250	238	234	242	226
502	UT593	D1S384	L16290	0	205.4	0	260.68	0	150.87	0.54	0	0	0	0	0	0
503	AFM200ve3	D1S422	Z23498	0	205.4	0	260.68	0	150.87	0.76	157	167	161	157	163	157
504	AFM310xh9	D1S492	Z24294	0	205.4	0	260.68	0	150.87	0.5	494	98	96	94	96	94
505	AFM290va9	D1S2823	Z51279	0	205.4	0	260.68	0.23	150.87	0.6	891	131	129	121	103	103
506	AFMa057vb5	D1S2877	Z51735	0	205.4	0	260.68	0.09	151.1	0.72	168	182	176	176	182	180
507	GATA31005	Unknown	G07813	0.75	205.4	0	260.68	0.75	151.19	0.81	300	320	308	304	312	300
509	GATA10C02	D1S533	G07788	0	209.15	0	264.95	0	154.08	0.81	193	225	221	209	213	209
510	UT5773	D1S1183	L18148	0	209.15	0	264.95	0	154.08	0.5	0	0	0	0	0	0
511	GGAA8F12	D1S1614	G07866	0	209.15	0	264.95	0	154.08	0.62	210	246	230	222	222	222
512	AFMb309xe1	D1S2757	Z53479	0	209.15	0	264.95	0	154.08	0.84	253	271	255	253	255	253
513	AFM031xd12	D1S412	Z23298	0	209.15	0	264.95	0	154.08	0.71	185	207	199	185	205	197
514	UT2402	D1S408	L18732	0.41	209.15	0.19	264.95	0	154.08	0.53	0	0	0	0	0	0
518	AFM165xc9	D1S413	Z23420	0	212.44	0	270.52	0	155.15	0.77	246	262	262	252	254	246
519	AFM330wf5	D1S2840	Z51414	0	212.44	0	270.52	0	155.15	0.56	125	141	137	137	137	137
520	GATA48B01	D1S1660	G07823	0	212.44	0	270.52	0	155.15	0.79	226	250	246	242	238	234
521	AFMb277yf5	D1S2745	Z53303	1.64	212.44	2.22	270.52	1.06	155.15	0.74	272	284	280	278	280	272
522	AFMc025xh5	D1S2817	Z54046	0	214.08	0	272.74	0	156.21	0.65	146	156	146	146	148	146
523	UT1591	D1S1175	L30889	0	214.08	0	272.74	0	156.21	0.65	0	0	0	0	0	0
524	UT492	D1S373	L16266	0	214.08	0	272.74	0	156.21	0.9	283	330	0	0	0	0
525	AFM337xd5	D1S1726	Z51442	0	214.08	0	272.74	0	156.21	0.74	261	279	275	275	275	273
526	UT5429	D1S1181	L18036	0	214.08	0	272.74	0	156.21	0.66	0	0	0	0	0	0
527	AFM353td5	D1S2853	Z51522	0	214.08	0	272.74	0	156.21	0.76	218	236	232	222	222	222
528	ATA4D06	D1S1632	G07782	0	214.08	0	272.74	0	156.21	0.71	136	148	139	139	136	136
529	GATA181001	Unknown	G27332	0	214.08	0	272.74	0	156.21	0.66	136	156	140	140	144	136
530	AFMa116wg1	D1S2622	Z52111	0.55	214.08	1.11	272.74	0	156.21	0.79	165	189	183	177	183	165
532	AFM136xa7	D1S1723	Z51003	0	215.17	0	274.96	0	156.21	0.83	167	181	179	171	171	167
533	AFMa109zh9	D1S2615	Z52067	0	215.17	0	274.96	0	156.21	0.78	232	243	234	232	234	232
534	AFM289ye9	D1S477	Z24084	0	215.17	0	274.96	0	156.21	0.68	216	230	230	224	228	224
535	AFM238xd10	D1S306	Z17267	0	215.17	0	274.96	0	156.21	0.62	261	281	277	263	273	273
536	AFMb055zh5	D1S2738	Z53237	0.82	215.17	1.11	274.96	0.27	156.21	0.71	114	132	122	118	116	116
537	UT995	D1S1171	L18499	0	215.99	0	276.07	0.12	156.48	0.67	0	0	0	0	0	0
538	GATA25A11	D1S1647	G07802	0	215.99	0	276.07	0.21	156.6	0.71	223	243	243	239	235	227
539	AFMb317xc9	D1S2764	Z53535	0.47	215.99	0.08	276.07	0.27	156.81	0.44	137	149	145	145	147	145
541	AFMb314wf9	D1S2760	Z53504	0	216.82	0.95	276.23	0	157.28	0.65	227	237	233	233	235	233
542	AFMa044zh1	D1S1727	Z51584	0	216.82	0	277.18	0	157.28	0.76	103	113	113	113	111	105
543	AFM291vfl	D1S1724	Z51283	0	216.82	0	277.18	0	157.28	0.54	106	124	106	106	106	106
544	AFMa190xd5	D1S2655	Z52412	0	216.82	0	277.18	0	157.28	0.9	224	260	240	238	254	252
545	ATA110004	Unknown	Unknown	0	216.82	0	277.18	0	157.28	0.69	217	238	223	223	232	223
546	AFMa272xd9	D1S2683	Z52722	1.64	216.82	2.22	277.18	1.07	157.28	0.79	177	189	187	183	187	179
547	AFMb002zg5	D1S2717	Z53041	0	218.46	0	279.4	0	158.35	0.73	262	270	268	262	262	262
548	AFMa224xc1	D1S2668	Z52594	0	218.46	0	279.4	0	158.35	0.77	233	247	239	239	245	243
549	AFMa132yc9	D1S510	Z24648	0	218.46	0	279.4	0.28	158.35	0.72	173	195	187	173	187	187
550	AFMa123yf1	D1S504	Z24625	0	218.46	0	279.4	0.26	158.63	0.51	124	138	134	124	134	134
551	GGAA23C07	D1S1678	G07862	1.46	218.46	2.23	279.4	0.19	158.89	0.67	297	313	309	301	309	305
554	AFM234wf6	D1S249	Z17051	0	220.65	0	282.75	0	159.42	0.87	155	185	177	177	161	159
555	AFMa052zd5	D1S2872	Z51686	0	220.65	0	282.75	0	159.42	0.76	187	201	195	195	195	187
556	AFM024xf8	D1S456	Z23292	2.19	220.65	0.64	282.75	3.21	159.42	0.72	197	211	211	209	201	199
557	AFMa133zd5	D1S2636	Z52218	0	222.84	0.47	283.39	0	162.63	0.61	216	224	222	222	222	216
558	AFMa290xd1	D1S2692	Z52805	0	222.84	0	283.86	0	162.63	0.87	187	217	201	199	195	187
559	AFMb046yc9	D1S2735	Z53212	0	222.84	0	283.86	0	162.63	0.77	217	233	231	229	231	217

TABLE 2-continued

Marker	Dnumber	GenBank- Num	sex- ave	cM	female	cM	male	cM	het	min	max	1331-01	1331-02			
560	AFMb347ya5	D1S2782	Z53786	0	222.84	0	283.86	0	162.63	0.83	274	298	296	292	282	274
561	AFMb334ya9	D1S2772	Z53688	0	222.84	0	283.86	0	162.63	0.53	263	277	267	267	267	263
562	AFMa274wa5	D1S2685	Z52733	0	222.84	0	283.86	0	162.63	0.81	157	171	171	167	163	161
563	AFMb032yfl	D1S2727	Z53161	0	222.84	0	283.86	0	162.63	0.73	225	245	245	243	241	227
564	AFM059yh4	D1S2796	Z50913	1.66	222.84	3.74	283.86	0	162.63	0.68	126	132	126	126	132	128
567	AFM281yg1	D1S471	Z24003	0	227.81	0	290.57	0	165.85	0.77	187	197	193	189	189	189
568	AFM224xc1	D1S245	Z17011	0	227.81	0	290.57	0	165.85	0.83	235	253	247	239	247	239
569	AFM310vb1	D1S491	Z24288	1.32	227.81	0	290.57	2.14	165.85	0.76	171	183	181	179	181	175
571	AFM179xg5	D1S414	Z23435	0	231.11	0	292.79	0	170.13	0.77	185	205	201	191	191	189
572	AFMc011yd5	D1S2810	Z53976	0	231.11	0	292.79	0	170.13	0.75	233	251	239	239	239	239
573	AFM156xg7	D1S217	Z16696	0	231.11	0	292.79	0	170.13	0.68	130	142	140	140	140	140
574	AFM278xe5	D1S2812	Z51248	0	231.11	0	292.79	0	170.13	0.69	119	135	131	127	131	119
575	AFMb342yg1	D1S2780	Z53752	0	231.11	0	292.79	0	170.13	0.7	136	148	144	136	148	144
576	AFM203zb6	D1S425	Z23538	0.39	231.11	0.85	292.79	0	170.13	0.81	92	108	102	98	108	96
577	GATA63B11	D1S1667	G07840	0.17	231.5	0.31	293.64	0	170.13	0.67	198	218	214	198	214	198
578	AFMa127wb5	D1S505	Z24626	0	231.67	0	293.95	0	170.13	0.75	145	167	165	161	163	159
579	AFMa303wh5	D1S2703	Z52859	1.14	231.67	0	293.95	2.13	170.13	0.88	196	228	222	216	214	212
584	AFMa125zg5	D1S2629	Z52174	0	233.95	0	295.1	0	173.33	0.72	157	169	167	159	165	159
585	AFMa157tg5	D1S2646	Z52327	0	233.95	0	295.1	0	173.33	0.59	201	211	207	203	205	205
586	AFM286yc1	D1S474	Z24051	0.57	233.95	1.18	295.1	0	173.33	0.59	106	114	110	110	110	108
590	AFMa115yc9	D1S2621	Z52105	0	238.52	0	304.46	0	173.33	0.66	157	163	159	159	161	159
591	AFM184yf6	D1S227	Z16806	0	238.52	0	304.46	0	173.33	0.71	111	123	121	119	119	119
592	AFMa151yh5	D1S2641	Z52289	0	238.52	0	304.46	0	173.33	0.7	225	235	231	227	229	227
593	AFMa043zg1	D1S2860	Z51576	0.57	238.52	1.16	304.46	0	173.33	0.82	168	184	176	176	182	168
595	GATA4H09	D1S549	G07831	0	239.66	0	306.78	0	173.33	0.75	157	193	193	189	177	173
596	UT5111	D1S395	L18519	0	239.66	0	306.78	0	173.33	0.62	0	0	0	0	0	0
597	AFMa058xg9	D1S2880	Z51749	0	239.66	0	306.78	0	173.33	0.76	113	135	125	113	129	127
598	UT1243	D1S399	L16373	0.53	239.66	1.06	306.78	0	173.33	0.58	0	0	0	0	0	0
599	UT6125	D1S1185	L30690	0	240.19	0	307.84	0	173.33	0.48	0	0	0	0	0	0
600	ATA24008	D1S1626	G07775	0	240.19	0	307.84	0	173.33	0.62	134	146	140	137	137	137
601	AFMa282ze9	D1S2689	Z52758	0	240.19	0	307.84	0	173.33	0.69	246	264	252	248	254	252
602	AFMb312zh5	D1S2758	Z53496	0	240.19	0	307.84	0	173.33	0.7	250	268	266	254	254	252
608	GATA23F09	D1S1644	G07799	0	242.34	0	312.16	0	173.33	0.75	253	281	269	265	273	265
609	UT5978	D1S1186	L30713	0	242.34	0	312.16	0	173.33	0.47	0	0	0	0	0	0
610	AFM147xf8	D1S213	Z16668	0	242.34	0	312.16	0	173.33	0.86	104	124	120	110	118	112
611	UT860	D1S389	L16338	0	242.34	0	312.16	0	173.33	0.65	0	0	0	0	0	0
612	AFM280za5	D1S469	Z23995	0	242.34	0	312.16	0	173.33	0.54	289	333	323	291	333	291
613	AFM225xe11	D1S439	Z23695	0	242.34	0	312.16	0	173.33	0.79	243	265	257	253	261	253
614	AFM290wd1	D1S479	Z24094	0	242.34	0	312.16	0	173.33	0.82	102	126	118	110	116	110
615	AFMb317wfl	D1S2763	Z53534	0	242.34	0	312.16	0	173.33	0.71	161	173	169	169	167	161
616	AFMa204zh1	D1S2662	Z52485	0	242.34	0	312.16	0	173.33	0.73	180	206	182	182	196	182
617	AFM284zd1	D1S2821	Z51262	1.36	242.34	2.74	312.16	0	173.33	0.53	71	90	76	76	88	76
618	ATA10006	D1S1617	G07766	0	243.7	0	314.9	0	173.33	0.76	118	139	124	118	124	118
619	AFMa130vd9	D1S2631	Z52193	0	243.7	0	314.9	0	173.33	0.42	132	144	132	132	132	132
620	AFM347tf5	D1S2847	Z51495	1.35	243.7	2.73	314.9	0	173.33	0.5	180	188	186	186	186	180
621	GATA64F05	D1S1668	G07841	0	245.05	0	317.63	0	173.33	0.69	167	191	179	175	179	167
622	AFMc005wc1	D1S2805	Z53938	0	245.05	0	317.63	0	173.33	0.58	261	283	273	265	265	265
623	AFM220xe1	D1S437	Z23665	0	245.05	0	317.63	0	173.33	0.65	133	165	139	139	165	137
624	Mfd64	D1S103	X54585	0	245.05	0	317.63	0	173.33	0.74	0	0	0	0	0	0
625	AFM321xe5	D1S2833	Z51370	0	245.05	0	317.63	0	173.33	0.83	92	108	104	96	108	100
626	GATA65A05	D1S1670	G07843	0	245.05	0	317.63	0	173.33	0.72	376	392	384	380	384	378
627	GATA44E05	D1S1656	G07820	0	245.05	0	317.63	0	173.33	0.89	130	161	161	149	146	134
628	AFM184xa9	D1S225	Z16800	0	245.05	0	317.63	0	173.33	0.8	111	133	123	111	129	113
629	AFM248ya5	D1S251	Z17121	2.18	245.05	1.05	317.63	2.13	173.33	0.81	249	271	255	253	261	249
630	ATA29C07	D1S3462	G07779	0	247.23	1.16	318.68	0	175.46	0.77	248	269	257	266	257	257
631	AFM119yh10	D1S459	Z23373	0	247.23	0	319.84	0	175.46	0.77	177	193	181	181	187	177
632	AFMa342ye5	D1S2709	Z52948	4.89	247.23	9.98	319.84	0	175.46	0.73	191	197	195	193	195	193
633	AFMa349xc5	D1S2712	Z52987	0	252.12	0	329.82	0	175.46	0.48	265	273	271	269	271	269
634	AFMb360zg1	D1S2800	Z53893	0	252.12	0	329.82	0	175.46	0.79	178	190	184	182	184	184
635	Mfd174	D1S179	M98981	0	252.12	0	329.82	0.02	175.46	0.74	163	193	177	177	165	165
636	AFM238ya7	D1S446	Z23747	0	252.12	0	329.82	0.1	175.48	0.69	89	123	119	91	91	91
637	UT1317	D1S1540	L18678	2.52	252.12	3.91	329.82	0.95	175.58	0.51	0	0	0	0	0	0
638	AFMa176xf1	D1S2649	Z52366	0	254.64	0	333.73	0	176.53	0.64	169	187	171	171	171	171
639	D1S74	D1S74	Unknown	0	254.64	0	333.73	0	176.53	0.64	0	0	0	0	0	0
640	AFM203yg9	D1S235	Z16905	1.62	254.64	2.9	333.73	0	176.53	0.71	175	195	193	187	189	175
641	AFM088xe5	D1S2850	Z50940	0	256.26	0	336.63	0	176.53	0.65	145	153	153	147	151	151
642	UT7711	D1S2216	L30333	0	256.26	0	336.63	0	176.53	0.17	0	0	0	0	0	0
643	AFMa247wg9	D1S2680	Z52709	0	256.26	0	336.63	0	176.53	0.58	219	233	221	219	219	219
644	AFMa245wd5	D1S2678	Z52690	6.7	256.26	9.5	336.63	4.29	176.53	0.56	256	272	260	258	268	260
645	UT5170	D1S517	L16445	0	262.96	0	346.13	0	180.82	0.67	0	0	0	0	0	0
646	AFMa230wh1	D1S2670	Z52616	0	262.96	0	346.13	0	180.82	0.83	116	142	136	136	136	126
647	UT418	D1S1149	L29971	2.53	262.96	3.1	346.13	2.14	180.82	0.66	0	0	0	0	0	0
650	AFM102xe3	D1S204	Z16572	0	267.51	0	351.96	0.59	183.45	0.44	248	252	252	252	252	250
651	Mfd211	D1S184	M98983	0	267.51	0	351.96	0	184.04	0.56	77	83	79	79	81	77
652	AFM116xf8	D1S304	Z17249	0	267.51	0	351.96	0	184.04	0.61	168	174	172	172	172	172
653	AFM218zb6	D1S321	Z17259	0	267.51	0	351.96	0	184.04	0.52	155	163	159	159	159	157
654	GATA4A09	D1S547	G07828	0	267.51	0	351.96	0	184.04	0.77	282	308	304	300	286	286

TABLE 2-continued

Marker	Dnumber	GenBank- Num	sex- ave	cM	female	cM	male	cM	het	min	max	1331-01	1331-02			
660	GATA50F11	D1S1609	G07832	0	274.53	0	356.24	0	193.85	0.8	180	208	188	188	188	180
661	AFMc013wc9	D1S2811	Z53989	0	274.53	0	356.24	0	193.85	0.89	120	164	148	134	150	148
662	AFMa290yf1	D1S2693	Z52807	0	274.53	0	356.24	0	193.85	0.55	163	169	163	163	163	163
663	AFM183xd8	D1S2679	Z51088	0	274.53	0	356.24	0	193.85	0.42	192	202	192	192	200	192

TABLE 3

Marker	Dnumber	GenBank- Num	sex- ave	cM	female	cM	male	cM	het	min	max	1331-01	1331-02			
24	AFMa244xh1	D2S2207	Z52683	0	20.57	0	14.86	0	26.09	0.84	209	238	234	230	231	222
25	AFMa134we5	D2S2169	Z52225	0	20.57	0	14.86	0	26.09	0.75	245	270	251	251	251	247
26	AFMc012xf9	D2S2326	Z53983	0.65	20.57	1.51	14.86	0	26.09	0.73	200	234	226	222	206	206
33	AFM268va5	D2S328	Z23899	0	27.6	0	25.73	0	29.29	0.7	209	217	213	211	215	215
34	Mfd328	D2S415	L22396	0	27.6	0	25.73	0	29.29	0.19	198	201	198	198	201	198
35	AFMa232wf1	D2S2200	Z52628	0	27.6	0	25.73	0	29.29	0.85	158	182	174	170	174	168
36	AFMa072zc1	D2S2377	Z51874	0	27.6	0	25.73	0	29.29	0.57	230	246	244	238	244	230
37	GGAA20G10	D2S1400	G08200	0	27.6	0	25.73	0	29.29	0.66	111	140	119	115	119	119
38	UT595	D2S262	L16291	3.45	27.6	4.32	25.73	2.5	29.29	0.8	175	208	0	0	0	0
50	AFMa116xd9	D2S2155	Z52113	0	38.33	0	39.73	0	36.81	0.58	251	257	255	253	255	253
51	AFM270xh9	D2S332	Z23932	0	38.33	0	39.73	0	36.81	0.59	148	162	154	154	162	162
52	AFM137xg11	D2S320	Z23393	0	38.33	0	39.73	0	36.81	0.81	175	193	185	185	181	179
53	GATA11H10	D2S1360	G08130	0.54	38.33	1.07	39.73	0	36.81	0.86	136	176	144	140	176	160
54	AFMa070we9	D2S2375	Z51851	0	38.87	0	40.8	0	36.81	0.83	253	273	267	265	265	263
55	AFM331zg5	D2S387	Z24434	0	38.87	0	40.8	0	36.81	0.86	191	221	221	203	217	215
56	UT5918	D2S1243	L18176	0	38.87	0	40.8	0	36.81	0.2	0	0	0	0	0	0
57	Mfd266	D2S224	L14302	0	38.87	0	40.8	0	36.81	0.63	165	183	181	179	181	165
58	AFM073ya5	D2S305	Z23327	1.06	38.87	0	40.8	2.13	36.81	0.72	269	283	277	275	277	275
59	AFM260xc5	D2S175	Z17165	0	39.93	0	40.8	0	38.94	0.61	133	145	139	133	143	143
60	AFM234xc3	D2S310	Z23721	0	39.93	0	40.8	0	38.94	0.59	139	145	143	143	143	143
61	AFMa341ye1	D2S2233	Z52944	0.54	39.93	1.07	40.8	0	38.94	0.83	130	144	134	134	138	134
62	AFM331we9	D2S2342	Z51416	0	40.47	0	41.87	0	38.94	0.72	150	160	160	152	156	152
65	AFMa064wh1	D2S2373	Z51812	0	42.65	0.65	42.38	0	40.37	0.53	223	237	225	225	235	225
66	APOB	Unknown	M14162	0	42.65	0.74	43.03	0	40.37	0.68	143	152	147	143	151	147
67	ATA9E06	D2S1358	G08118	0	42.65	0.98	43.77	0	40.37	0.36	158	161	158	158	158	158
68	Mfd292	D2S220	L14305	1.44	42.65	0	44.75	2.86	40.37	0.77	157	177	165	161	167	161
71	AFMa134vf1	D2S2168	Z52223	0	45.3	0	46.18	0	44.3	0.86	199	229	215	209	219	211
72	AFM193yb4	D2S144	Z16833	0	45.3	0	46.18	0	44.3	0.85	152	200	178	174	182	182
73	AFMa309xd1	D2S2226	Z52878	0	45.3	0	46.18	0	44.3	0.65	184	196	184	184	194	184
74	AFM242yd8	D2S171	Z17101	0.53	45.3	1.07	46.18	0	44.3	0.87	253	281	269	263	269	267
75	AFMb346ye5	D2S2303	Z53780	0	45.83	0	47.25	0	44.3	0.7	256	266	264	262	264	262
76	Mfd307	D2S223	L14308	0	45.83	0	47.25	0	44.3	0.7	233	253	243	233	245	235
77	AFM302yf5	D2S2337	Z51312	0	45.83	0	47.25	0	44.3	0.79	266	308	278	266	266	266
78	AFM217xh8	D2S158	Z16987	0	45.83	0	47.25	0	44.3	0.66	266	278	276	276	278	276
79	Mfd54	D2S73	L15791	0	45.83	0	47.25	0	44.3	0.56	0	0	0	0	0	0
80	GAAT1F2	D2S1324	G08122	0.54	45.83	0	47.25	1.06	44.3	0.52	202	210	210	206	210	210
81	AFM350ye1	D2S2350	Z51511	0	46.37	0	47.25	0	45.36	0.66	92	100	98	94	98	96
82	AFMa136wh9	D2S2170	Z52234	0	46.37	0	47.25	0	45.36	0.62	130	134	134	132	132	132
83	AFMa305wh9	D2S2223	Z52868	0	46.37	0	47.25	0	45.36	0.71	182	200	196	196	196	196
84	AFMa052yb5	D2S2144	Z51683	0.53	46.37	0	47.25	1.07	45.36	0.84	217	245	237	235	237	229
85	AFM254vc9	D2S174	Z17139	0	46.9	0	47.25	0	46.43	0.8	203	221	217	205	219	217
86	AFMb009xf1	D2S2247	Z53070	0.53	46.9	1.07	47.25	0	46.43	0.72	148	160	150	150	158	150
87	AFM234ya9	D2S165	Z17057	0	47.43	0	48.32	0	46.43	0.84	81	111	97	91	101	93
88	AFM303yf1	D2S366	Z24237	0	47.43	0	48.32	0	46.43	0.81	210	234	220	220	222	220
89	AFMb082zd5	D2S2263	Z53296	0.54	47.43	0	48.32	1.06	46.43	0.81	207	221	217	207	211	211
90	AFM240yf8	D2S170	Z17091	0	47.97	0	48.32	0	47.49	0.89	203	225	211	207	219	209
91	GATA8F07	D2S405	G08192	0	47.97	0	48.32	0	47.49	0.66	233	253	253	245	249	249
92	AFMb357zf5	D2S2312	Z53872	0	47.97	0	48.32	0	47.49	0.64	254	258	256	254	254	254
93	ATA3G09	D2S1322	G08114	0	47.97	0	48.32	0	47.49	0.54	126	141	132	132	135	132
94	AFM303yc1	D2S365	Z24236	0	47.97	0	48.32	0	47.49	0.86	166	206	200	174	200	170
95	AFM318za9	D2S375	Z24345	0	47.97	0	48.32	0	47.49	0.53	173	183	179	173	173	173
96	AFM347ya5	D2S392	Z24580	0.53	47.97	1.08	48.32	0	47.49	0.66	218	224	222	218	222	218
101	AFMa239yd5	D2S2203	Z52652	0	50.65	0	52.62	0	48.5	60.68	258	270	264	262	268	262
102	AFM296vg9	D2S352	Z24167	0	50.65	0	52.62	0	48.5	60.82	186	206	200	200	190	190
103	AFMb313yd5	D2S2283	Z53500	0	50.65	0	52.62	0	48.5	60.76	263	275	267	267	271	267
104	AFM339yf9	D2S2347	Z51459	0	50.65	0	52.62	0	48.5	60.81	260	282	268	264	272	272
105	AFMb040xf5	D2S2255	Z53193	0	50.65	0	52.62	0	48.5	60.74	214	226	224	222	218	216
106	AFMc011xh5	D2S2325	Z53974	0	50.65	0	52.62	0	48.5	60.77	188	202	202	190	198	192
107	AFMa132ze9	D2S400	Z24650	0	50.65	0	52.62	0	48.56	0.5	186	194	190	190	192	190
108	AFM351tb1	D2S2351	Z51516	3.23	50.65	4.37	52.62	2.14	48.56	0.74	239	248	244	244	241	241
110	UT668	D2S265	L18366	0	54.96	0.55	58.63	0	50.7	0.65	0	0	0	0	0	0
111	AFM303ze1	D2S367	Z24240	0	54.96	0	59.18	0	50.7	0.86	137	165	159	137	157	157
112	GATA22E06	D2S1325	G08133	0	54.96	0	59.18	0	50.7	0.59	115	127	123	119	119	119
113	AFMa066ze9	D2S2374	Z51838	0.55	54.96	1.07	59.18	0	50.7	0.85	261	293	289	287	287	261

TABLE 3-continued

Marker	Dnumber	GenBank- Num	sex- ave	cM	female	cM	male	cM	het	min	max	1331-01	1331-02			
117	GATA190004	Unknown	G27325	0	59.36	1.57	64.09	0	53.02	0.53	208	220	216	216	216	
118	ATA21D11	D2S1346	G07878	0	59.36	0	65.66	0	53.02	0.79	249	267	267	258	261	255
119	AFMa298yg5	D2S2220	Z52828	0	59.36	0	65.66	0	53.02	0.56	106	118	114	106	118	114
120	AFM267zc9	D2S177	Z17191	0	59.36	0	65.66	0	53.02	0.85	276	302	294	284	294	286
121	AFMa130wgl1	D2S2163	Z52198	0.55	59.36	1.08	65.66	0	53.02	0.76	257	267	261	261	263	261
126	AFMb351xf1	D2S2305	Z53817	0	61.66	0	70.24	0	53.02	0.64	126	134	128	126	130	126
127	AFMa142yfl	D2S2172	Z52268	0	61.66	0	70.24	0.17	53.02	0.79	262	274	270	266	270	264
128	GATA194B06	Unknown	Unknown	1.75	61.66	2.69	70.24	0.43	53.19	0.75	258	298	278	274	278	262
138	AFMb318xa9	D2S2291	Z53545	0	69.77	0	81.8	0	57.65	0.76	233	245	243	241	243	233
139	AFMb310xc5	D2S2280	Z53480	0	69.77	0	81.8	0	57.65	0.7	168	180	176	168	174	174
140	AFMa350xh9	D2S2240	Z52998	0.54	69.77	1.07	81.8	0	57.65	0.84	177	193	183	183	187	185
141	AFM337yh5	D2S391	Z24452	0	70.31	0	82.87	0	57.65	0.79	142	152	150	148	150	144
142	AFMa073yfl	D2S2378	Z51881	0	70.31	0	82.87	0	57.65	0.85	192	218	212	200	218	200
143	AFMa191xa5	D2S2182	Z52423	0.32	70.31	0.54	82.87	0	57.65	0.78	228	242	228	228	236	234
146	ATA76C08	Unknown	Unknown	0	72.79	0	85.75	0	59.96	0.68	220	232	229	220	223	220
147	UT2070	D2S1264	L30651	0	72.79	0	85.75	0	59.96	0.51	0	0	0	0	0	0
148	UT670	D2S1248	L30074	0.82	72.79	1.44	85.75	0	59.96	0.66	0	0	0	0	0	0
149	AFMb363yg9	D2S2316	Z53917	0	73.61	0	87.19	0	59.96	0.67	122	138	124	122	130	124
150	AFM093xh3	D2S123	Z16551	0	73.61	0	87.19	0	59.96	0.76	197	227	211	211	213	211
151	AFMa119ye5	D2S2156	Z52131	0	73.61	0	87.19	0	59.96	0.76	163	171	171	169	169	163
152	GATA26H10	D2S2739	G08142	0	73.61	0	87.19	0	59.96	0.9	281	329	309	301	325	309
153	ATA27004	D2S1352	G07883	0	73.61	0	87.19	0	59.96	0.66	113	128	116	113	128	113
154	AFMa060wd5	D2S2369	Z51766	2.73	73.61	4.27	87.19	1.16	59.96	0.7	244	256	254	254	254	248
155	AFMa045ye9	D2S2352	Z51590	0	76.34	0	91.46	0	61.12	0.78	262	282	280	276	280	278
156	AFM205te7	D2S2251	Z51141	0	76.34	0	91.46	0	61.12	0.81	237	255	247	247	249	237
157	AFM248yd5	D2S2292	Z51200	0.54	76.34	1.07	91.46	0	61.12	0.61	260	290	264	260	260	260
160	AFMa191xd1	D2S2183	Z52425	0	77.97	0	92.53	0	63.43	0.7	222	240	226	226	232	228
161	GATA23H01	D2S1364	G08137	0	77.97	0	92.53	0	63.43	0.58	118	134	122	118	118	118
162	AFMa086zb1	D2S2388	Z51980	0	77.97	0	92.53	0	63.43	0.63	199	217	215	211	215	211
163	AFMb304yh1	D2S2279	Z53456	2.19	77.97	3.2	92.53	1.15	63.43	0.67	187	197	193	187	195	187
164	GATA130A05	Unknown	G10441	0	80.16	0	95.73	0	64.58	0.61	221	233	233	229	229	225
165	AFM297we1	D2S357	Z24184	0	80.16	0	95.73	0	64.58	0.79	198	216	208	202	212	198
166	AFM310xf5	D2S370	Z24293	0	80.16	0	95.73	0	64.58	0.76	214	226	218	216	222	222
167	AFM348tf1	D2S393	Z24587	0	80.16	0	95.73	0	64.58	0.82	84	103	96	95	94	92
168	GGAT4008	D2S444	G08203	0	80.16	0	95.73	0	64.58	0.54	110	126	118	118	118	118
169	AFMb363yfl	D2S2315	Z53915	0	80.16	0	95.73	0	64.58	0.58	169	185	181	181	181	169
170	UT8053	D2S1278	L30182	0	80.16	0	95.73	0	64.58	0.54	0	0	0	0	0	0
171	GATA8B11	D2S406	G08193	0	80.16	0	95.73	0	64.58	0.68	178	194	190	190	194	194
172	UT2032	D2S1261	L17952	0.53	80.16	0	95.73	1.07	64.58	0.66	0	0	0	0	0	0
173	AFMc025xe1	D2S2332	Z54045	0	80.69	0	95.73	0	65.65	0.78	148	160	158	154	156	152
174	AFM275za9	D2S337	Z23959	0	80.69	0	95.73	0	65.65	0.88	233	255	249	245	239	233
175	AFMa126ydl	D2S2160	Z52178	0	80.69	0	95.73	0	65.65	0.71	181	191	189	185	191	183
176	AFM326zh9	D2S386	Z24411	0	80.69	0	95.73	0	65.65	0.17	210	216	216	216	216	216
177	AFM165xd8	D2S2198	Z51074	0	80.69	0	95.73	0.41	65.65	0.52	219	239	235	229	233	229
178	AFMa130xb5	D2S2165	Z52200	0.8	80.69	1.07	95.73	0.4	66.06	0.71	111	125	121	115	125	123
182	ATA17C10	Unknown	G09808	0	82.82	0	98.93	0	66.71	0.55	209	224	209	209	215	209
183	AFMa103wh1	D2S2397	Z52025	0	82.82	0	98.93	0	66.71	0.78	183	193	187	187	189	187
184	Mfd330	D2S416	L22398	0	82.82	0	98.93	0	66.71	0.6	135	141	141	139	137	137
185	AFMa306yf9	D2S2225	Z52876	1.06	82.82	2.13	98.93	0	66.71	0.49	160	178	170	160	170	170
186	AFMa346xd9	D2S2235	Z52973	0	83.88	0	101.06	0	66.71	0.61	170	176	174	172	174	172
187	AFM321xd9	D2S380	Z24374	0	83.88	0	101.06	0	66.71	0.83	229	253	253	249	237	229
188	AFM172xe7	D2S136	Z16769	0	83.88	0	101.06	0	66.71	0.74	91	111	97	97	95	91
189	AFMb322yh5	D2S2293	Z53598	0	83.88	0	101.06	0	66.71	0.67	112	122	120	116	120	116
190	AFM168xgl1	D2S134	Z16763	0	83.88	0	101.06	0	66.71	0.76	196	216	210	196	208	204
191	UT5213	D2S1257	L17733	0	83.88	0	101.06	0	66.71	0.65	0	0	0	0	0	0
192	AFM205yg7	D2S296	Z23557	0	83.88	0	101.06	0	66.71	0.66	156	170	158	158	170	158
193	UT18	Unknown	L29350	0.54	83.88	0	101.06	1.07	66.71	0.41	0	0	0	0	0	0
194	AFM203wb6	D2S290	Z23527	0	84.42	0	101.06	0	67.78	0.73	197	223	215	205	219	207
195	AFMa341xa9	D2S2231	Z52939	0	84.42	0	101.06	0	67.78	0.84	248	269	268	251	260	250
196	AFM234zh2	D2S166	Z17060	1.06	84.42	2.14	101.06	0	67.78	0.55	236	246	242	240	242	242
197	AFM320yd9	D2S379	Z24367	0	85.48	0	103.2	0	67.78	0.64	178	188	182	182	182	180
197	AFM320yd9	D2S379	Z24367	0	85.48	0	103.2	0	67.78	0.64	178	188	182	182	182	180
198	AFM349th9	D2S2349	Z51504	0	85.48	0	103.2	0	67.78	0.8	194	210	206	202	206	194
199	GATA8G06	D2S1336	G08195	0	85.48	0	103.2	0	67.78	0.69	241	261	253	249	253	249
200	GATA66D01	D2S1772	G08170	0	85.48	0	103.2	0	67.78	0.81	154	202	190	174	186	182
201	AFMa059wf5	D2S2368	Z51756	0.54	85.48	0	103.2	1.06	67.78	0.8	388	412	404	388	408	406
202	AFM038xh8	D2S285	Z23306	0	86.02	0	103.2	0	68.84	0.84	189	211	195	191	209	191
203	AFM184yc1	D2S282	Z23442	0	86.02	0	103.2	0	68.84	0.47	200	212	204	204	204	204
204	AFM154xf8	D2S2171	Z51027	0.8	86.02	1.6	103.2	0	68.84	0.58	242	250	242	242	242	242
208	AFM220xa11	D2S303	Z23663	0	88.15	0	106.41	0	69.91	0.62	132	144	140	132	140	134
209	AFM267ve9	D2S327	Z23893	0	88.15	0	106.41	0	69.91	0.74	123	133	127	125	129	123
210	AFMb286xa5	D2S2115	Z53338	0	88.15	0	106.41	0	69.91	0.58	88	102	92	90	96	90
211	AFM203yb6	D2S292	Z23534	0	88.15	0	106.41	0	69.91	0.72	180	192	192	180	180	180
212	Mfd115	D2S101	L15792	0	88.15	0	106.41	0	69.91	0.58	0	0	0	0	0	0
213	AFMa343xe9	D2S2113	Z52953	0	88.15	0	106.41	0	69.91	0.84	166	204	190	166	192	178
214	GGAA4007	D2S443	G08201	0.54	88.15	1.07	106.41	0	69.91	0.71	223	255	247	231	243	223
216	AFM198ta1	D2S145	Z16847	0	89.76	0	109.63	0	69.91	0.59	248	275	270	248	248	248

TABLE 3-continued

Marker	Dnumber	GenBank- Num	sex- ave	cM	female	cM	male	cM	het	min	max	1331-01	1331-02			
217	GATA181G08	Unknown	G27287	0	89.76	0	109.63	0	69.91	0.75	210	246	234	218	234	230
218	AFM203xc3	D2S291	Z23530	0.53	89.76	1.07	109.63	0	69.91	0.68	180	202	184	184	184	184
219	AFMa205zc5	D2S2111	Z52493	0	90.29	0	110.7	0	69.91	0.77	208	220	216	216	218	216
220	AFM323vf9	D2S2109	Z51375	0	90.29	0	110.7	0	69.91	0.75	220	232	228	228	228	226
221	AFMa296xc5	D2S2112	Z52812	0.53	90.29	0	110.7	1.06	69.91	0.73	118	136	130	130	130	130
222	AFMa116zh9	D2S2110	Z52119	0	90.82	0	110.7	0	70.97	0.77	129	143	139	139	143	139
223	GATA69E12	D2S1394	G08174	0	90.82	0	110.7	0	70.97	0.7	162	174	162	162	170	166
224	GATA32B06	D2S1374	G08148	3.23	90.82	3.25	110.7	3.2	70.97	0.72	128	152	148	140	144	140
228	GATA71G04	D2S1777	G08183	0	99.41	0	123.66	0	75.24	0.65	196	208	204	196	200	196
229	ATA16009	Unknown	G07874	0	99.41	0	123.66	0	75.24	0.71	146	176	170	170	176	170
230	GATA6C12	D2S438	G08175	0	99.41	0	123.66	0	75.24	0.73	147	163	147	147	155	147
231	AFM240vh12	D2S169	Z17082	0.81	99.41	1.63	123.66	0	75.24	0.55	194	202	198	196	200	198
235	AFM161yh10	D2S2180	Z51048	0	102.62	0	130.13	0	75.24	0.72	204	226	208	208	226	222
236	UT428	D2S253	L18272	0	102.62	0	130.13	0	75.24	0.62	0	0	0	0	0	0
237	AFMa210xd1	D2S2191	Z52500	0.54	102.62	1.07	130.13	0	75.24	0.64	170	184	180	180	180	180
238	AFMc025yh5	D2S2333	Z54050	0	103.16	0	131.2	0	75.24	0.84	246	260	254	250	258	248
239	AFMa129xe9	D2S2162	Z52187	0	103.16	0	131.2	0	75.24	0.6	137	145	143	143	145	141
240	AFM331xf1	D2S2343	Z51418	0	103.16	0	131.2	0	75.24	0.67	239	255	245	241	243	241
241	GATA14B12	D2S428	G08132	0	103.16	0	131.2	0	75.24	0.74	143	158	154	147	158	147
242	AFM044xa1	D2S289	Z23309	0	103.16	0	131.2	0	75.24	0.71	183	195	183	183	189	183
243	AFM350td1	D2S394	Z24590	0	103.16	0	131.2	0	75.24	0.48	119	141	141	137	137	137
244	GATA115D05	Unknown	G10313	0	103.16	0	131.2	0	75.24	0.72	215	235	231	219	227	227
245	AFMa061yb9	D2S2371	Z51788	0	103.16	0	131.2	0	75.24	0.63	177	185	181	179	181	179
246	GATA6F08	D2S440	G08177	0	103.16	0	131.2	0	75.24	0.68	187	211	199	195	199	195
247	GATA62B10	Unknown	G08165	0	103.16	0	131.2	0	75.24	0.79	145	181	161	157	165	161
248	GATA71009	D2S1396	G08181	0	103.16	0	131.2	0	75.24	0.77	110	130	122	114	122	110
249	GATA6E12	Unknown	G15739	1.84	103.16	0	131.2	2.13	75.24	0.82	216	264	256	248	236	216
256	AFMa196zf9	D2S2187	Z52444	0	110.68	0	141.93	0.45	79.05	0.63	149	159	155	153	159	153
257	AFMa125yg1	D2S2159	Z52172	0	110.68	0	141.93	0	79.5	0.74	172	186	182	178	182	178
258	AFMa115za5	D2S2154	Z52107	0.53	110.68	0	141.93	1.07	79.5	0.52	271	277	275	273	275	273
259	AFMa303wf5	D2S2222	Z52858	0	111.21	0	141.93	0	80.57	0.73	217	229	225	225	227	225
260	AFM052xb4	D2S113	Z16483	0	111.21	0	141.93	0	80.57	0.79	206	230	226	208	208	208
261	AFMa286zb5	D2S2216	Z52785	0	111.21	0	141.93	0	80.57	0.76	133	147	143	137	145	143
262	AFMa153zg5	D2S217	Z52309	1.07	111.21	2.13	141.93	0	80.57	0.76	123	135	125	123	131	125
265	AFM316tg5	D2S373	Z24324	0	114.42	0	146.2	0	82.7	0.74	218	238	232	232	222	218
266	AFMb277ze1	D2S2264	Z53305	0	114.42	0	146.2	0	82.7	0.78	241	256	251	247	251	241
267	GATA176001	D2S2972	G27268	1.07	114.42	1.06	146.2	0.41	82.7	0.77	216	244	232	228	236	228
268	ATA19E11	D2S1343	G07877	0	115.49	0	147.26	0.67	83.11	0.73	260	275	269	269	0	0
269	UT5125	D2S274	L16436	0	115.49	0	147.26	0	83.78	0.86	131	182	0	0	0	0
270	UT1297	D2S1258	L17792	0	115.49	0	147.26	0	83.78	0.59	0	0	0	0	0	0
271	AFMa048ya9	D2S2356	Z51623	0.48	115.49	0	147.26	0.79	83.78	0.63	126	136	134	128	132	126
272	GATA13H01	Unknown	G12437	0.05	115.97	0	147.26	0.28	84.57	0.56	102	114	110	106	106	106
273	AFM172xc3	D2S135	Z16767	0.24	116.02	0	147.26	0.54	84.85	0.6	129	135	135	133	135	129
274	AFM212zh10	D2S299	Z23624	0.29	116.26	0	147.26	0.53	85.39	0.33	196	204	202	200	200	200
275	AFMa338wd5	D2S2229	Z52924	0	116.55	0	147.26	0	85.92	0.83	178	202	188	178	198	196
276	AFM262xb5	D2S176	Z17178	1.07	116.55	2.14	147.26	0	85.92	0.69	240	250	244	240	246	240
277	AFMa046ya9	D2S1897	Z51604	0.54	117.62	1.07	149.4	0	85.92	0.89	215	237	222	218	236	221
278	GATA5G02	D2S436	G08161	0	118.16	0	150.47	0	85.92	0.83	179	202	195	191	191	183
279	AFM164za3	D2S1894	Z51068	0	118.16	0	150.47	0	85.92	0.45	256	266	258	258	266	258
280	AFM205xa1	D2S293	Z23547	0	118.16	0	150.47	0	85.92	0.84	165	191	171	165	191	175
281	AFM021xf6	D2S2364	Z50884	0	118.16	0	150.47	0	85.92	0.65	93	99	97	97	93	93
282	AFMa083zb5	D2S2386	Z51947	1.06	118.16	0	150.47	1.07	85.92	0.74	271	283	279	275	277	271
283	GATA123002	Unknown	G10345	0	119.22	0	150.47	0	86.99	0.54	146	158	154	150	154	150
284	AFMa163xa9	D2S1890	Z52348	0	119.22	0	150.47	0	86.99	0.74	206	220	214	212	214	212
285	GATA83B01	D2S1784	G08188	1.07	119.22	3.2	150.47	0	86.99	0.64	198	214	210	206	206	202
286	AFMa081ze5	D2S1889	Z51914	0	120.29	0	153.67	0	86.99	0.58	203	215	207	207	207	207
287	AFMb001ye9	D2S1891	Z53029	0	120.29	0	153.67	0	86.99	0.5	256	264	260	256	260	256
288	AFM277wc5	D2S340	Z23978	0	120.29	0	153.67	0	86.99	0.71	149	175	163	163	163	157
289	AFMb339ze1	D2S1893	Z53730	1.34	120.29	3.2	153.67	0	86.99	0.75	244	264	262	250	260	254
292	AFM220ze3	D2S160	Z17008	0	122.96	0	157.94	0	88.06	0.78	204	218	214	210	210	204
293	AFMb285xf9	D2S2269	Z53327	0	122.96	0	157.94	0	88.06	0.89	252	280	266	252	270	266
294	Mfd68A	1L1A	X03833	0	122.96	0	157.94	0	88.06	0.71	0	0	0	0	0	0
295	AFMa041xc1	D2S1896	Z51557	0.53	122.96	1.07	157.94	0	88.06	0.79	175	193	187	177	191	187
296	AFM087xa1	D2S121	Z16545	0	123.49	0	159.01	0	88.06	0.83	156	184	176	168	184	182
297	AFMa037xf1	D2S1895	Z51541	0.54	123.49	1.07	159.01	0	88.06	0.8	115	129	123	115	127	119
298	UT2131	D2S1265	L18061	0	124.03	0	160.08	0	88.06	0.64	0	0	0	0	0	0
299	UT7798	D2S1277	L30348	0	124.03	0	160.08	0	88.06	0.65	0	0	0	0	0	0
300	GATA123B03	Unknown	G10342	0	124.03	0	160.08	0	88.06	0.47	145	157	157	153	153	153
301	AFM234te1	D2S308	Z23702	1.15	124.03	0	160.08	2.13	88.06	0.68	228	234	232	228	232	228
302	GATA6A03	D2S437	G08172	0	125.18	0	160.08	0	90.19	0.74	185	221	185	185	217	185
303	AFM303wc5	D2S363	Z24231	0	125.18	0	160.08	0	90.19	0.7	252	264	256	256	260	254
304	GATA4E11	D2S410	G08157	0.57	125.18	0	160.08	1.07	90.19	0.83	162	178	178	164	168	166
309	AFMa282vd5	D2S2212	Z52748	0	129.22	0	164.98	0	93.41	0.56	176	186	178	178	182	176
310	AFMc015wb5	D2S2329	Z54005	0	129.22	0	164.98	0	93.41	0.7	206	226	208	208	208	208
311	AFM324vg1	D2S2341	Z51386	0.57	129.22	1.22	164.98	0	93.41	0.75	229	247	245	241	243	241
312	AFMb280xg5	D2S2265	Z53308	0	129.79	0	166.2	0	93.41	0.78	171	189	177	177	189	179
313	AFMb053yb9	D2S2258	Z53226	0	129.79	0	166.2	0	93.41	0.73	138	166	154	138	162	138

TABLE 3-continued

Marker	Dnumber	GenBank- Num	sex- ave	cM	female	cM	male	cM	het	min	max	1331-01	1331-02			
314	AFM191vg11	D2S283	Z23461	0.58	129.79	1.22	166.2	0	93.41	0.79	244	294	244	244	286	244
315	AFMa305zcl	D2S2224	Z52871	0	130.37	0	167.42	0	93.41	0.81	240	266	250	242	248	240
316	AFM281yd5	D2S343	Z24002	0	130.37	0	167.42	0	93.41	0.57	187	201	197	195	197	193
317	AFM092ye9	D2S2353	Z50947	0	130.37	0	167.42	0	93.41	0.71	92	112	108	106	108	108
318	GGAT1C4	Unknown	G15741	0	130.37	0	167.42	0	93.41	0.64	190	202	194	194	194	190
319	AFM016ye5	D2S110	Z16427	1.14	130.37	1.22	167.42	1.06	93.41	0.73	153	167	157	157	159	155
320	UT992	D2S1251	L31342	0	131.51	0	168.64	0	94.47	0.6	0	0	0	0	0	0
321	GATA135B08	Unknown	G10534	0	131.51	0	168.64	0	94.47	0.83	244	272	264	248	260	256
322	AFM289xb1	D2S347	Z24078	0	131.51	0	168.64	0	94.47	0.8	264	292	292	264	286	264
323	ATA10H07	D2S1340	G07873	1.07	131.51	0	168.64	2.13	94.47	0.48	117	129	126	123	126	126
324	GATA27A12	D2S1328	G08140	0	132.58	0	168.64	0	96.6	0.75	142	166	162	154	162	158
325	AFM319tc9	D2S2339	Z51360	0	132.58	0	168.64	0	96.6	0.74	202	212	204	202	208	204
326	AFM249wfl	D2S2296	Z51205	0	132.58	0	168.64	0	96.6	0.76	254	264	260	256	262	262
327	UT5135	D2S275	L16439	0	132.58	0	168.64	0	96.6	0.9	214	270	0	0	0	0
328	UT502	D2S257	L18304	0	132.58	0	168.64	0	96.6	0.56	0	0	0	0	0	0
329	UT852	D2S1250	L31247	0	132.58	0	168.64	0	96.6	0.56	0	0	0	0	0	0
330	UT7080	D2S1859	L29720	0	132.58	0	168.64	0	96.6	0.23	0	0	0	0	0	0
331	AFM323wc5	D2S383	Z24383	0	132.58	0	168.64	0	96.6	0.76	172	186	184	172	178	176
332	UT7454	D2S1273	L30468	0	132.58	0	168.64	0	96.6	0.64	0	0	0	0	0	0
333	UT5668	D2S1272	L30450	1.07	132.58	2.14	168.64	0	96.6	0.51	0	0	0	0	0	0
340	UT1358	D2S1241	L17804	0	142.83	0.32	184.12	0	100.87	0.67	0	0	0	0	0	0
341	UT5116111	D2S1280	L18521	0	142.83	0.33	184.44	0	100.87	0.45	0	0	0	0	0	0
342	AFMa297wcl	D2S2219	Z52817	0	142.83	0.28	184.77	0	100.87	0.56	199	223	221	221	221	221
343	AFM052xf8	D2S114	Z16484	1.69	142.83	2.3	185.05	1.06	100.87	0.84	214	234	232	214	234	226
344	UT431	D2S255	L16246	0	144.52	0	187.35	0	101.93	0.67	0	0	0	0	0	0
345	Mfd19A	D2S71	X54565	0	144.52	0	187.35	0	101.93	0.47	0	0	0	0	0	0
346	AFM220xc9	D2S2282	Z51185	0	144.52	0	187.35	0	101.93	0.79	291	305	295	295	305	295
347	AFM304ta9	D2S368	Z24242	0.56	144.52	0	187.35	1.08	101.93	0.81	218	244	232	226	238	232
348	GATA4007	D2S1334	G08156	1.07	145.08	1.07	187.35	1.07	103.01	0.81	266	310	282	282	286	286
349	AFM248za9	D2S314	Z23815	0	146.15	0	188.42	0	104.08	0.65	255	271	261	261	261	261
350	AFMa224xb9	D2S2196	Z52593	0	146.15	0	188.42	0	104.08	0.74	252	268	260	258	258	252
351	AFMa071tf9	D2S2376	Z51861	1.25	146.15	0	188.42	2.56	104.08	0.63	94	114	104	104	104	104
352	GATA8H05	D2S442	G08194	0	147.4	0	188.42	0	106.64	0.66	196	212	204	200	200	200
353	AFMb316zb5	D2S2288	Z53528	0	147.4	0	188.42	0	106.64	0.63	101	115	111	105	111	111
354	AFMa058ye1	D2S2367	Z51751	0	147.4	0.92	188.42	0	106.64	0.46	126	142	134	134	134	134
355	AFMa083xh5	D2S2385	Z51942	2.49	147.4	0.15	189.34	3.86	106.64	0.85	128	150	148	128	146	128
356	AFM119xd2	D2S127	Z16610	0	149.89	0	189.49	0	110.5	0.85	283	303	303	299	295	295
357	AFMb314zb9	D2S2286	Z53516	0	149.89	0	189.49	0	110.5	0.7	254	264	262	260	262	256
358	AFMb281zb9	D2S2266	Z53314	0	149.89	0	189.49	0	110.5	0.82	244	260	248	244	258	250
359	AFMb348zg9	D2S2304	Z53798	0	149.89	0	189.49	0	110.5	0.83	158	172	170	162	168	168
360	AFM205tg1	D2S150	Z16910	0	149.89	0	189.49	0	110.5	0.84	218	242	234	230	242	226
361	AFM290ye9	D2S349	Z24097	0	149.89	0	189.49	0	110.5	0.49	129	135	129	129	133	133
362	AFM312vfl	D2S372	Z24315	0	149.89	0	189.49	0	110.5	0.24	296	308	298	298	298	298
363	AFM143xe11	D2S129	Z16660	0	149.89	0	189.49	0	110.5	0.78	162	180	174	170	180	174
364	AFMa107wh9	D2S2149	Z52050	0	149.89	0	189.49	0	110.5	0.82	238	272	260	238	266	238
365	AFM290zb5	D2S2334	Z51281	0	149.89	0	189.49	0	110.5	0.77	259	273	271	269	261	261
366	GATA26B04	D2S1326	G08136	0	149.89	0	189.49	0	110.5	0.86	233	268	264	248	248	233
367	AFM087xg9	D2S122	Z16546	0	149.89	0	189.49	0	110.5	0.88	93	111	105	99	107	93
368	AFMa349xf9	D2S2239	Z52989	1.07	149.89	0	189.49	2.13	110.5	0.65	162	174	174	174	174	174
369	GGAA26B01	D2S1792	G08199	0	150.96	0	189.49	0	112.63	0.76	173	197	185	185	189	189
370	AFM157xe3	D2S132	Z16700	0	150.96	0	189.49	0	112.63	0.75	189	213	201	201	209	205
371	Mfd301	D2S222	L14307	0	150.96	0	189.49	0	112.63	0.78	118	138	122	118	134	118
372	AFM094ye9	D2S2362	Z50958	0	150.96	0	189.49	0	112.63	0.61	203	213	207	203	207	207
373	AFM102xd8	D2S2365	Z50965	0	150.96	0	189.49	0	112.63	0.68	121	137	129	129	129	123
374	GGAA2A01	Unknown	G15740	0	150.96	0	189.49	0	112.63	0.6	238	250	242	238	246	242
375	AFM362td9	D2S397	Z24612	0.54	150.96	1.08	189.49	0	112.63	0.75	198	210	206	204	206	200
376	AFMb357zh1	D2S2313	Z53873	0	151.5	0	190.57	0	112.63	0.85	225	247	235	225	241	237
377	AFM321yg5	D2S381	Z24378	0.54	151.5	0	190.57	1.07	112.63	0.62	298	312	304	298	304	298
378	AFM218xa1	D2S302	Z23652	0	152.04	0	190.57	0	113.7	0.23	96	102	96	96	96	96
379	GATA135B11	Unknown	G10449	0	152.04	0	190.57	0	113.7	0.57	181	193	189	189	189	181
380	AFM207vf8	D2S151	Z16933	0	152.04	0	190.57	0	113.7	0.8	211	227	221	219	225	225
381	GGAA20G04	D2S1399	G08198	0	152.04	0	190.57	0	113.7	0.8	137	173	153	141	161	141
382	AFMb334za5	D2S2301	Z53692	0	152.04	0	190.57	0	113.7	0.74	108	135	118	113	118	113
383	AFM294vf5	D2S2335	Z51293	0	152.04	0	190.57	0	113.7	0.76	153	173	173	171	173	167
384	AFM210xb2	D2S298	Z23597	0	152.04	0	190.57	0	113.7	0.69	133	147	141	135	141	135
385	AFMb285xg9	D2S2270	Z53328	0	152.04	0	190.57	0	113.7	0.56	209	221	217	209	213	211
386	AFM301za5	D2S361	Z24214	0	152.04	0	190.57	0	113.7	0.68	240	250	250	244	244	244
387	AFMa191xg5	D2S2184	Z52427	1.62	152.04	1.09	190.57	1.27	113.7	0.65	236	250	238	236	238	238
390	AFMb297ze9	D2S2275	Z53417	0	154.48	0	192.75	0	116.39	0.77	125	152	133	127	127	127
391	AFMb302yb9	D2S2277	Z53442	0	154.48	0	192.75	0	116.39	0.61	245	259	251	247	245	245
392	AFMa348wh1	D2S2236	Z52982	2.44	154.48	2.19	192.75	2.68	116.39	0.79	204	228	0	0	0	0
396	AFM094xb3	D2S2360	Z50955	0	161.26	0	202.61	0	120.14	0.58	202	206	204	204	204	202
397	GATA113F01	Unknown	G10297	0	161.26	0	202.61	0	120.14	0.59	204	220	216	208	212	208
398	AFM183xc3	D2S141	Z16793	0	161.26	0	202.61	0	120.14	0.87	152	178	172	164	166	160
399	AFM191wg9	D2S142	Z16821	0.55	161.26	0	202.61	1.07	120.14	0.76	254	266	264	262	262	254
400	AFM192yd2	D2S284	Z23467	0	161.81	0	202.61	0	121.21	0.74	228	244	238	236	238	234
401	Mfd350	D2S418	L22418	2.7	161.81	3.27	202.61	2.15	121.21	0.55	216	224	224	218	224	224

TABLE 3-continued

Marker	Dnumber	GenBank- Num	sex- ave	cM	female	cM	male	cM	het	min	max	1331-01	1331-02		
402	AFMb317zg1	D2S2290	Z53542	0	164.51	0	205.88	0	123.36	0.46	140	146	144	142	140
403	AFM211yd6	D2S156	Z16966	0	164.51	0	205.88	0	123.36	0.85	168	198	198	192	170
404	AFMa049zd5	D2S2357	Z51635	0	164.51	0	205.88	0	123.36	0.31	184	188	188	184	184
405	AFM164wa11	D2S2190	Z51059	0	164.51	0	205.88	0	123.36	0.71	220	239	227	222	220
406	ATA27H09	D2S1353	G07884	0.3	164.51	0	205.88	0.59	123.36	0.8	138	159	156	147	150
407	AFM225zd8	D2S306	Z23699	0.25	164.81	0	205.88	0.49	123.95	0.7	219	243	221	221	219
408	AFMa061xe1	D2S2370	Z51785	1.45	165.06	1.63	205.88	1.35	124.44	0.77	87	101	89	87	91
409	AFMa081za9	D2S2380	Z51912	0	166.51	0.35	207.51	0	125.79	0.63	160	175	167	164	167
410	AFM135xa7	D2S2395	Z50999	0	166.51	0.42	207.86	0	125.79	0.41	145	153	149	149	149
411	AFM296xa5	D2S354	Z24171	2.9	166.51	0.87	208.28	4.04	125.79	0.63	175	183	179	175	179
412	AFMa083xd1	D2S2384	Z51940	0	169.41	0	209.15	0	129.83	0.71	251	259	255	255	255
413	AFMa053ze1	D2S2363	Z51700	0	169.41	0	209.15	0	129.83	0.68	193	211	193	209	209
414	AFMa131wb9	D2S399	Z24635	0	169.41	0	209.15	0	129.83	0.58	205	225	217	215	217
415	AFMa119yh5	D2S2157	Z52132	0	169.41	0	209.15	0	129.83	0.8	136	154	152	148	152
416	AFM021tc1	D2S111	Z16431	0	169.41	0	209.15	0	129.83	0.81	126	140	130	130	128
417	AFM094ze9	D2S124	Z16556	0	169.41	0	209.15	0	129.83	0.7	157	163	157	157	157
418	AFM164za5	D2S195	Z51069	0	169.41	0	209.15	0	129.83	0.72	280	290	288	288	288
419	AFMc015yd9	D2S2330	Z54008	0	169.41	0	209.15	0	129.83	0.82	153	171	169	167	157
420	GATA42008	D2S1379	G08153	0	169.41	0	209.15	0	129.83	0.64	150	162	154	154	150
421	AFM321zf9	D2S382	Z24379	1.63	169.41	1.1	209.15	2.14	129.83	0.82	156	170	164	164	164
425	AFM205xf12	D2S294	Z23550	0	174.3	0.82	215.72	0.16	132.72	0.86	184	216	206	184	196
426	AFM319xg1	D2S376	Z24352	0	174.3	0.61	216.54	0.17	132.88	0.47	266	270	270	268	268
427	AFMb314ye1	D2S2284	Z53511	1.61	174.3	0.76	217.15	1.06	133.05	0.62	166	174	172	170	170
428	AFMa082tf5	D2S2381	Z51915	0	175.91	0	217.91	0	134.11	0.77	219	231	229	219	221
429	AFMa155tf9	D2S2177	Z52323	0	175.91	0	217.91	0	134.11	0.67	117	133	119	117	117
430	AFM275yd5	D2S335	Z23956	0	175.91	0	217.91	0	134.11	0.8	98	114	110	98	100
431	AFM270ze9	D2S333	Z23934	0	175.91	0	217.91	0	134.11	0.78	184	202	190	188	190
432	AFMa222xb9	D2S2194	Z52567	0	175.91	0	217.91	0	134.11	0.69	138	154	150	142	142
433	AFMb342zd9	D2S2302	Z53753	1.62	175.91	3.84	217.91	0	134.11	0.79	198	212	208	208	200
434	AFM266ve1	D2S326	Z23889	0	177.53	0	221.75	0.36	134.11	0.86	156	174	174	168	168
435	UT7564	D2S1274	L30503	0	177.53	0	221.75	0.59	134.47	0.53	0	0	0	0	0
436	UT433	D2S1238	L29975	0	177.53	0	221.75	0.56	135.06	0.61	0	0	0	0	0
437	UT6478	D2S1267	L30582	3.26	177.53	3.86	221.75	0.65	135.62	0.64	0	0	0	0	0
438	AFMa203ye5	D2S2188	Z52467	0	180.79	0	225.61	0	136.27	0.64	124	146	134	134	134
439	GATA194A05	Unknown	G27300	0	180.79	0	225.61	0.37	136.27	0.56	234	262	250	254	250
440	AFMb354we5	D2S2307	Z53839	0.73	180.79	1.1	225.61	0.21	136.64	0.6	146	158	154	148	154
444	AFM214x03	D2S300	Z23625	0	182.96	0	228.89	0	137.34	0.59	86	90	88	88	88
445	AFMa143yh9	D2S2173	Z52282	0	182.96	0	228.89	0.04	137.34	0.59	227	243	239	237	241
446	AFM176xd4	D2S138	Z16773	0	182.96	0	228.89	0.37	137.38	0.66	111	125	111	111	111
447	AFM326yf9	D2S385	Z24410	0	182.96	0	228.89	0.52	137.75	0.52	162	168	164	164	164
448	AFM200wa11	D2S148	Z16881	1.08	182.96	0	228.89	0.14	138.27	0.62	180	200	188	188	188
450	AFMb355xd5	D2S2310	Z53855	0	185.13	0	232.16	0	138.41	0.79	244	260	260	250	246
451	AFM323zd5	D2S384	Z24394	0	185.13	0	232.16	0	138.41	0.72	241	253	249	245	241
452	ATA44H04	Unknown	G15782	0	185.13	0.51	232.16	0	138.41	0.8	107	125	119	110	110
453	AFMb072wg1	D2S2261	Z53265	1.08	185.13	0.58	232.67	1.06	138.41	0.87	114	148	136	126	130
454	AFMb310xf5	D2S2281	Z53481	0	186.21	0	233.25	0	139.47	0.77	215	229	227	225	227
455	GATA65003	D2S1391	G08168	0	186.21	0	233.25	0	139.47	0.79	109	133	129	125	121
456	AFMb297xc1	D2S2273	Z53411	0	186.21	0	233.25	0	139.47	0.81	140	164	162	152	152
457	AFM303ya9	D2S364	Z24235	0.63	186.21	1.32	233.25	0	139.47	0.8	226	248	248	236	236
458	AFMa057vg9	D2S2366	Z51738	1.27	186.84	0.36	234.57	1.07	139.47	0.76	172	184	179	179	178
459	Mfd145A	D2S103	M98992	0	188.11	0.4	234.93	0	140.54	0.74	0	0	0	0	0
460	AFM292wd1	D2S350	Z24113	0	188.11	0.45	235.33	0	140.54	0.42	152	180	152	152	152
461	AFM207xg1	D2S152	Z16941	0	188.11	0.11	235.78	0	140.54	0.8	269	285	279	275	273
462	GATA14E05	Unknown	G09193	1.89	188.11	3.95	235.89	0	140.54	0.81	162	190	178	170	182
463	AFM066xc1	D2S118	Z16511	0	190	0	239.84	0	140.54	0.78	169	191	183	181	181
464	AFM105xc1	D2S318	Z23358	0	190	0	239.84	0	140.54	0.64	212	220	218	216	216
465	GATA12B05	D2S426	G08129	0	190	0	239.84	0	140.54	0.6	152	164	160	164	156
466	GATA71C07	D2S1775	G08182	0	190	0	239.84	0	140.54	0.57	115	135	131	127	127
467	AFMb082ye1	D2S2262	Z53295	0	190	0	239.84	0	140.54	0.65	224	244	234	234	234
468	ATA29E07	Unknown	Unknown	0	190	0	239.84	0	140.54	0.83	86	110	110	86	104
469	AFM155ye1	D2S280	Z23407	0	190	0	239.84	0	140.54	0.51	133	143	139	139	139
470	UT866	D2S270	L16341	0	190	0	239.84	0	140.54	0.6	0	0	0	0	0
471	AFM333wf9	D2S389	Z24438	0	190	0	239.84	0	140.54	0.86	189	219	217	215	201
472	AFMb007wc1	D2S2246	Z53055	1.08	190	2.75	239.84	0	140.54	0.64	203	209	207	203	205
474	ATA24F09	D2S1350	G07881	0	193.26	0	245.34	0.54	141.07	0.47	94	100	97	97	94
475	GATA11H04	D2S425	G08126	0	193.26	0	245.34	0	141.61	0.66	294	310	302	302	294
476	AFM081yg5	D2S315	Z23344	0	193.26	0	245.34	0	141.61	0.59	114	130	126	126	124
477	AFMa130zf9	D2S2167	Z52206	0	193.26	0	245.34	0.62	141.61	0.73	117	127	125	123	119
478	UT5048	D2S273	L16431	1.19	193.26	0.33	245.34	0.66	142.23	0.84	382	405	0	0	0
479	AFM297ve9	D2S2336	Z51305	0	194.45	0.29	245.67	0	142.89	0.65	134	148	148	144	138
480	AFM280wd5	D2S342	Z23993	0	194.45	0.46	245.96	0	142.89	0.77	231	247	242	240	234
481	AFM065yfl1	D2S117	Z16508	1.2	194.45	2.18	246.42	0	142.89	0.82	186	212	208	200	206
482	GATA28B07	Unknown	G09588	0	195.65	0	248.6	0	142.89	0.62	266	282	278	270	270
483	AFMa084yf9	D2S2387	Z51958	0	195.65	0	248.6	0	142.89	0.76	86	118	100	98	100
484	AFM092yd11	D2S316	Z23352	0	195.65	0	248.6	0	142.89	0.65	140	154	152	146	150
485	AFM289xd9	D2S348	Z24079	0	195.65	0	248.6	0	142.89	0.58	249	255	249	255	249
486	AFM058ye3	D2S115	Z16495	0	195.65	0	248.6	0	142.89	0.72	106	126	120	116	114

TABLE 3-continued

Marker	Dnumber	GenBank- Num	sex- ave	cM	female	cM	male	cM	het	min	max	1331-01	1331-02			
487	AFMc005wb9	D2S2318	Z53937	1.2	195.65	0	248.6	2.56	142.89	0.8	190	210	204	202	202	196
488	GATA149B10	Unknown	G10568	0	196.85	0	248.6	0	145.45	0.66	122	138	130	126	138	126
489	AFMa289xc1	D2S2217	Z52794	0	196.85	0	248.6	0	145.45	0.2	253	259	255	255	255	255
490	AFMc013yd5	D2S2327	Z53995	0	196.85	0	248.6	0	145.45	0.67	161	177	173	173	173	173
491	Mfd156A	D2S105	M98994	0	196.85	0	248.6	0	145.45	0.63	0	0	0	0	0	0
492	AFM318wf1	D2S374	Z24341	0	196.85	0	248.6	0	145.45	0.63	114	136	134	130	132	130
493	AFMa100zh5	D2S2392	Z52004	0	196.85	0	248.6	0	145.45	0.81	256	286	272	272	284	272
494	AFMb315xd5	D2S2287	Z53517	0	196.85	0	248.6	0	145.45	0.48	162	170	166	162	166	162
495	AFM135xf12	D2S2396	Z51000	0	196.85	0	248.6	0	145.45	0.63	155	167	163	163	165	163
496	AFM234zh6	D2S311	Z23732	1.8	196.85	0.08	248.6	2.56	145.45	0.81	185	207	197	193	199	197
497	AFM064xh7	D2S116	Z16506	0	198.65	0.31	248.68	0	148.01	0.75	134	150	144	142	148	144
498	AFM269zf9	D2S2309	Z51231	0	198.65	0.34	248.99	0	148.01	0.61	190	204	204	190	194	190
499	Mfd36	D2S72	X54578	0	198.65	0.36	249.33	0	148.01	0.79	0	0	0	0	0	0
500	GATA161E02	Unknown	G10633	0	198.65	0	249.69	0	148.01	0.7	116	128	120	116	124	124
501	AFMa285zb9	D2S2214	Z52778	0	198.65	0	249.69	0	148.01	0.58	274	286	278	278	278	274
502	AFM289vf5	D2S346	Z24076	0	198.65	0	249.69	0	148.01	0.57	141	159	155	152	152	152
503	AFM234vg5	D2S309	Z23709	0.53	198.65	1.07	249.69	0	148.01	0.76	176	204	196	194	198	196
504	AFMa203zf1	D2S2189	Z52470	0	199.18	0	250.76	0	148.01	0.63	276	290	286	278	278	276
505	AFM074xg9	D2S307	Z23329	0	199.18	0	250.76	0	148.01	0.58	205	221	215	205	219	217
506	AFMb316zc5	D2S2289	Z53530	1.25	199.18	2.53	250.76	0	148.01	0.83	177	209	203	199	197	193
509	AFM304tb5	D2S369	Z24243	0	202.92	0	258.34	0	148.01	0.81	153	167	165	163	159	153
510	AFM210yf10	D2S155	Z16958	0	202.92	0	258.34	0	148.01	0.77	163	171	169	163	169	167
511	GATA74C07	D2S1782	G09997	0.54	202.92	1.07	258.34	0	148.01	0.75	119	135	131	119	131	119
512	AFMa050ya5	D2S2358	Z51640	1.07	203.46	2.14	259.41	0	148.01	0.83	201	213	209	201	209	203
513	AFMa216zd1	D2S2192	Z52525	0	204.53	0	261.55	0	148.01	0.75	166	184	184	174	176	170
514	UT430	D2S254	L18273	0	204.53	0	261.55	0	148.01	0.58	0	0	0	0	0	0
515	AFM296xb9	D2S355	Z24172	0	204.53	0	261.55	0	148.01	0.74	102	112	112	102	102	102
516	AFM266vc5	D2S325	Z23888	0.53	204.53	1.07	261.55	0	148.01	0.81	190	214	210	210	200	194
517	AFMa246xc5	D2S2208	Z52696	0	205.06	0	262.62	0	148.01	0.88	164	196	196	168	182	172
518	AFMc009wh1	D2S2321	Z53965	0	205.06	0	262.62	0	148.01	0.76	81	103	95	95	99	81
519	AFMb297ya9	D2S2274	Z53413	0	205.06	0	262.62	0	148.01	0.63	254	276	262	254	276	254
520	AFMa351zd1	D2S2242	Z53007	0	205.06	0	262.62	0	148.01	0.86	181	205	205	203	201	197
521	ATC3E01	D2S422	G08117	0.53	205.06	0	262.62	1.07	148.01	0.37	145	154	148	145	154	148
522	AFM157xg9	D2S2178	Z51041	0.54	205.59	0	262.62	1.07	149.08	0.66	167	181	179	171	177	173
523	207ye11	D2S153	Unknown	0	206.13	0	262.62	0	150.15	0.81	0	0	0	0	0	0
524	AFM262xe5	D2S322	Z23860	0	206.13	0	262.62	0	150.15	0.49	191	209	201	191	199	199
525	AFM210yc11	D2S154	Z16956	0	206.13	0	262.62	0	150.15	0.67	314	326	320	316	320	316
526	GATA29A06	D2S1369	G08144	0	206.13	0	262.62	0	150.15	0.72	255	275	271	259	275	267
527	AFM212ze9	D2S157	Z16974	0.61	206.13	1.07	262.62	0	150.15	0.75	104	122	116	116	120	116
528	AFM311vg9	D2S371	Z24303	0	206.74	0	263.69	0	150.15	0.67	148	156	154	152	154	150
529	GATA52C06	D2S1385	G08163	0	206.74	0	263.69	0	150.15	0.6	231	251	235	231	231	231
530	UT7691	D2S1276	L30305	1.84	206.74	3.59	263.69	0	150.15	0.5	0	0	0	0	0	0
532	UT1385	D2S1259	L30865	0	210.43	0.58	267.92	0	152.28	0.59	0	0	0	0	0	0
533	UT6232	D2S1266	L30773	0	210.43	0.58	268.5	0	152.28	0.65	0	0	0	0	0	0
534	GATA30E06	D2S2944	G08147	0	210.43	0	269.08	0	152.28	0.79	108	136	120	116	128	120
535	AFMa052tc1	D2S2361	Z51666	0	210.43	0	269.08	0	152.28	0.77	235	253	245	245	237	237
536	AFM172xg3	D2S137	Z16770	0	210.43	0	269.08	0	152.28	0.69	140	158	154	148	148	140
537	AFMa101xg5	D2S2394	Z52007	0	210.43	0	269.08	0	152.28	0.66	238	250	250	242	244	238
538	GATA42E06	Unknown	G09743	0	210.43	0	269.08	0	152.28	0.67	124	156	124	124	152	124
539	AFM275vh5	D2S2319	Z51242	0	210.43	0	269.08	0	152.28	0.85	273	295	291	283	293	293
540	AFM191xb8	D2S143	Z16823	0	210.43	0	269.08	0	152.28	0.83	109	132	126	121	121	121
541	ATA21C10	D2S1345	G07876	0	210.43	0	269.08	0	152.28	0.81	169	187	181	178	187	184
542	AFM273va9	D2S334	Z23938	0	210.43	0	269.08	0	152.28	0.51	119	127	125	119	119	119
543	GATA26005	D2S1327	G08138	0	210.43	0	269.08	0	152.28	0.74	143	171	159	155	171	159
544	AFMc009yh1	D2S2322	Z53966	0	210.43	0	269.08	0	152.28	0.72	196	222	198	196	210	198
545	AFM143xd12	D2S128	Z16658	3.06	210.43	4.29	269.08	2.13	152.28	0.79	146	164	160	158	160	150
547	AFMb009zd5	D2S2248	Z53074	0	214.71	1.31	274.21	0	154.41	0.76	171	199	185	185	189	183
548	AFM234xb8	D2S164	Z17053	0	214.71	0	275.52	0	154.41	0.84	265	303	287	285	277	277
549	AFM214ye1	D2S301	Z23635	0.54	214.71	1.07	275.52	0	154.41	0.8	224	240	224	224	230	230
550	GATA29E02	D2S1371	G08143	0.53	215.25	1.07	276.59	0	154.41	0.78	101	125	109	105	117	105
551	AFMa246xh5	D2S2210	Z52699	0	215.78	0	277.66	0	154.41	0.5	97	105	103	99	101	101
552	AFMa175vf1	D2S2179	Z52355	0	215.78	0	277.66	0	154.41	0.52	106	122	118	112	120	110
553	AFMb013ye1	D2S2249	Z53083	0	215.78	0	277.66	0	154.41	0.77	130	152	148	146	144	142
554	GATA4G12	D2S434	G08158	0	215.78	0	277.66	0	154.41	0.74	266	286	274	270	274	266
555	Mfd149A	D2S104	M98993	0	215.78	0	277.66	0	154.41	0.58	0	0	0	0	0	0
556	AFM249wg9	D2S173	Z17133	0	215.78	0	277.66	0	154.41	0.7	117	125	123	119	119	117
557	GAA3A09	D2S1338	G08202	0	215.78	0	277.66	0	154.41	0.87	165	205	197	177	201	169
558	AFMa357wc9	D2S2244	Z53019	0	215.78	0	277.66	0	154.41	0.39	228	240	236	236	236	234
559	AFM205yb4	D2S295	Z23553	0.53	215.78	1.07	277.66	0	154.41	0.6	203	213	207	203	213	209
562	UT1459	D2S1242	L17825	0	218.45	0	283.01	0	154.41	0.88	136	172	0	0	0	0
563	AFM077yc5	D2S120	Z16532	0	218.45	0	283.01	0	154.41	0.71	187	211	209	203	211	209
564	GAAT1C10	D2S424	G08120	0	218.45	0	283.01	0	154.41	0.67	158	194	186	182	194	186
565	AFM234wa9	D2S163	Z17049	0	218.45	0	283.01	0	154.41	0.8	213	231	223	221	225	223
566	AFMa050ye5	D2S2359	Z51643	0	218.45	0	283.01	0	154.41	0.71	243	271	267	267	267	267
567	AFMa109wg5	D2S2151	Z52060	1.07	218.45	2.15	283.01	0	154.41	0.43	244	252	250	250	250	250
570	GAAT1B02	D2S1323	G08121	0	221.13	0	288.38	0	154.41	0.42	324	328	328	324	328	324
571	AFM277vb9	D2S339	Z23972	0	221.13	0	288.38	0	154.41	0.77	123	133	133	123	129	129

TABLE 3-continued

Marker	Dnumber	GenBank- Num	sex- ave	cM	female	cM	male	cM	het	min	max	1331-01	1331-02			
572	AFM119xc7	D2S126	Z16609	0	221.13	0	288.38	0	154.41	0.82	141	161	159	151	157	153
573	AFMa104yd5	D2S2148	Z52034	0	221.13	0	288.38	0	154.41	0.6	189	201	199	197	199	191
574	AFMa061yf9	D2S2372	Z51789	1.07	221.13	0.72	288.38	1.07	154.41	0.68	143	155	151	149	151	151
575	AFM261yb1	D2S2300	Z51212	0	222.2	0.1	289.1	0	155.48	0.54	235	253	251	251	251	251
576	AFM079za5	D2S313	Z23338	0	222.2	0.14	289.2	0	155.48	0.69	149	155	155	153	155	155
577	AFMc010xc1	D2S2323	Z53968	0	222.2	0.11	289.34	0	155.48	0.39	271	279	273	273	273	273
578	Mfd128B	D2S102	M98991	0	222.2	0	289.45	0	155.48	0.86	138	162	148	138	148	148
579	AFMa224xd5	D2S2197	Z52595	0.53	222.2	1.07	289.45	0	155.48	0.7	130	142	138	136	138	138
580	AFM301wg1	D2S360	Z24210	0	222.73	0	290.52	0.63	155.48	0.72	106	126	120	108	120	108
581	AFM150xf2	D2S130	Z16672	1.6	222.73	2.13	293.72	0.44	156.11	0.75	196	214	204	196	202	196
582	AFM165zh8	D2S133	Z16757	0	224.33	0	292.65	0	156.55	0.68	283	301	301	291	289	283
583	UT1340	D2S279	L16390	0	224.33	0	292.65	0	156.55	0.55	0	0	0	0	0	0
584	AFMa337zd1	D2S2228	Z52916	1.34	224.33	1.07	292.65	0	156.55	0.78	191	215	195	193	207	205
585	AFM294yf5	D2S351	Z24140	0	225.67	0	293.72	0	156.55	0.52	166	172	168	166	172	170
586	AFM127xb4	D2S2390	Z50997	0	225.67	0	293.72	0	156.55	0.6	273	289	281	279	273	273
587	AFM296vh9	D2S353	Z24168	1.33	225.67	0	293.72	4.27	156.55	0.54	287	301	299	287	299	287
588	UT709	D2S268	L18377	0	227	0	293.72	0	160.82	0.43	0	0	0	0	0	0
589	AFMa240xh1	D2S2204	Z52665	0	227	0	293.72	0	160.82	0.75	234	250	250	244	236	234
590	GATA23D03	D2S1363	G08134	0	227	0	293.72	0	160.82	0.79	172	192	192	184	188	184
591	AFMb354we5	D2S2308	Z53842	0.54	227	0	293.72	1.06	160.82	0.84	211	233	223	211	215	211
592	AFMa046we1	D2S2354	Z51598	0.47	227.54	0.02	293.72	0.56	161.88	0.8	255	275	261	257	257	257
593	ATA24E12	D2S1349	G07882	0.6	228.01	0.02	293.74	0.51	162.44	0.57	270	282	282	270	279	279
594	AFM218zg3	D2S159	Z16996	0	228.61	1.02	293.76	0	162.95	0.77	165	177	173	171	175	169
595	AFMa090zh5	D2S2389	Z51990	0.53	228.61	0	294.78	1.07	162.95	0.52	227	241	231	231	233	231
598	GATA43F06	Unknown	G09744	0	231.27	0	296.92	0	166.15	0.69	244	260	260	256	256	244
599	UT506	D2S260	L18307	0	231.27	0	296.92	0	166.15	0.4	0	0	0	0	0	0
600	AFMa196vd1	D2S2185	Z52440	0	231.27	0	296.92	0	166.15	0.52	152	168	162	162	162	152
601	GATA6E08	D2S439	G08176	0	231.27	0	296.92	0	166.15	0.54	165	193	189	189	189	189
602	UT501	D2S1239	L29999	0	231.27	0	296.92	0	166.15	0.64	0	0	0	0	0	0
603	UT5193	D2S1256	L31113	0	231.27	0	296.92	0	166.15	0.63	0	0	0	0	0	0
604	AFM302vh9	D2S362	Z24219	0.54	231.27	0	296.92	1.1	166.15	0.78	102	116	116	104	112	104
605	AFMa289ye1	D2S2218	Z52797	0	231.81	0	296.92	0	167.25	0.64	187	205	195	195	199	195
606	AFMa283yb1	D2S2213	Z52763	0.55	231.81	0	296.92	1.09	167.25	0.75	139	153	153	145	151	147
611	AFM248we5	D2S172	Z17115	0	235.07	0	300.12	0	170.54	0.92	258	296	280	280	286	268
612	UT432	D2S256	L18274	0	235.07	0	300.12	0	170.54	0.62	0	0	0	0	0	0
613	AFM324vc9	D2S2340	Z51384	1.63	235.07	2.14	300.12	1.09	170.54	0.79	181	197	187	185	191	185
614	GATA12H10	D2S427	G08131	0	236.7	0	302.26	0	171.63	0.76	243	263	259	251	259	255
615	AFMb298we9	D2S2276	Z53419	0	236.7	0	302.26	0	171.63	0.37	181	205	199	199	199	197
616	AFMa217yf9	D2S2193	Z52531	1.63	236.7	3.47	302.26	0	171.63	0.9	239	271	259	253	257	253
620	AFM345yc1	D2S2348	Z51488	0	242.17	0	310.95	0	173.86	0.9	256	284	275	275	273	266
621	AFM269yd9	D2S331	Z23917	0	242.17	0	310.95	0	173.86	0.73	252	266	266	252	266	260
622	AFMa154ye1	D2S2176	Z52316	0.84	242.17	1.08	310.95	0	173.86	0.74	193	211	211	205	207	205
638	AFM182ya5	D2S140	Z16792	0	263.56	0	325.11	0	202.14	0.77	151	167	159	157	159	159
639	2QTEL86	D2S2987	Unknown	0	263.56	0	325.11	0	202.14	0.58	0	0	0	0	0	0
640	2QTEL37	D2S2985	Unknown	0	263.56	0	325.11	0	202.14	0.23	0	0	0	0	0	0
641	2QTEL44	D2S2585	Unknown	0.97	263.56	0	325.11	1.69	202.14	0.55	0	0	0	0	0	0

TABLE 4

Marker	Dnumber	GenBank- Num	het	min	max	1331-01	1331-02	sex- ave	cM	female	cM	male	cM			
44	AFMa037zf5	D3S2338	Z51546	0.86	179	197	187	179	189	187	0	42.1	0	42.25	0	41.65
45	GATA178C11	Unknown	Unknown	0.61	112	128	124	120	120	120	0	42.1	0	42.25	0	41.65
46	AFM198yb12	D3S3595	Z51119	0.3	269	273	269	269	269	269	0	42.1	0	42.25	0	41.65
47	GATA123C09	Unknown	G10344	0.72	153	173	169	153	169	165	0	42.1	0	42.25	0	41.65
48	AFM205wh6	D3S3510	Z51144	0.72	279	289	285	283	285	283	0	42.1	0	42.25	0	41.65
49	GATA25G06	Unknown	G09393	0.71	236	256	256	252	248	248	0	42.1	0	42.25	0	41.65
50	AFMa176ye9	D3S3473	Z52368	0.71	217	225	221	219	221	221	0	42.1	0	42.25	0	41.65
58	UT7684	D3S2327	L30301	0.57	0	0	0	0	0	0	0	49.18	0	54.15	0	43.86
59	AFM276vc9	D3S1583	Z23961	0.39	149	173	149	149	167	149	0	49.18	0	54.15	0	43.86
60	Mfd342	D3S2301	L22410	0.72	322	48	234	234	242	242	0	49.18	0	54.15	0	43.86
61	UT6375	D3S2317	L30555	0.61	0	0	0	0	0	0	0	49.18	0	54.15	0	43.86
62	UT6471	D3S2307	L30598	0.65	0	0	0	0	0	0	0	49.18	0	54.15	0	43.86
63	AFMa346xa9	D3S3598	Z52972	0.57	173	179	179	179	173	173	0	49.18	0	54.15	0	43.86
64	AFM234ya11	D3S1567	Z23722	0.47	241	253	243	243	253	245	0	49.18	0	54.15	0	43.86
81	AFM338xe5	D3S1611	Z24553	0.66	252	268	268	252	258	258	0	61.52	0	72.57	0	50.27
82	AFMb286yb1	D3S3623	Z53344	0.76	211	227	223	217	225	223	0	61.52	0	72.57	0	50.27
83	AFM207wb4	D3S3512	Z51156	0.68	131	143	141	139	141	133	0	61.52	0	72.57	0	50.27
85	AFM220xg3	D3S1561	Z23666	0.63	226	250	226	226	240	226	0	61.52	0	72.57	0	50.27
86	AFM339xh1	D3S1612	Z24555	0.68	206	226	226	218	218	210	0	61.52	0	72.57	0	50.27
87	AFMa070yg5	D3S3718	Z51857	0.71	152	168	158	158	158	158	0	61.52	0	72.57	0	50.27
88	AFM164we1	D3S1277	Z16732	0.82	260	280	278	274	268	266	0	61.52	0	72.57	0	50.27
92	AFMa190yf5	D3S3572	Z52415	0.74	268	284	284	278	282	278	0	63.12	0	75.77	0	50.27

TABLE 4-continued

Marker	Dnumber	GenBank- Num	het	min	max	1331-01	1331-02	sex- ave	cM	female	cM	male	cM			
93	AFMb314yh1	D3S3639	Z53513	0.62	180	188	180	180	184	0	63.12	0	75.77	0	50.27	
94	AFMb020yd9	D3S3605	Z53116	0.73	211	224	223	223	215	0	63.12	0	75.77	0	50.27	
96	AFM038xc1	D3S1260	Z16466	0.65	254	276	266	254	266	264	0	63.12	0	75.77	0	50.27
97	AFMa312ze9	D3S3593	Z52896	0.74	199	225	219	213	215	213	0	63.12	0	75.77	0	50.27
101	AFMa162wd9	D3S3564	Z52330	0.78	204	220	220	204	220	204	0	67.94	0	80.11	0	55.61
102	AFMc006yh1	D3S3685	Z53950	0.89	195	221	211	195	219	207	0	67.94	0	80.11	0	55.61
103	UT6506	D3S2319	L30602	0.22	0	0	0	0	0	0	67.94	0	80.11	0	55.61	
104	AFMc016yd9	D3S3687	Z54011	0.4	160	170	164	160	164	162	0	67.94	0	80.11	0	55.61
105	UT5662	D3S2304	L18143	0.66	0	0	0	0	0	0	67.94	0	80.11	0	55.61	
106	ACT2E06	D3S2407	G08205	0.75	204	222	216	213	222	216	0	67.94	0	80.11	0	55.61
108	AFMb291zc9	D3S3624	Z53367	0.72	134	154	152	150	150	146	0	68.47	0	81.17	0	55.61
109	AFMa154wb9	D3S3563	Z52311	0.77	220	238	228	224	228	228	0	68.47	0	81.17	0	55.61
110	AFMb362yc1	D3S3678	Z53905	0.76	247	265	265	265	263	261	0	68.47	0	81.17	0	55.61
111	AFMa344zg5	D3S3597	Z52963	0.74	261	269	263	263	269	267	0	68.47	0.37	81.17	0	55.61
115	AFM273ve9	D3S1581	Z23940	0.88	78	102	98	92	98	88	0	70.61	0	83.31	0	57.73
116	AFMb31Sze9	D3S3640	Z53519	0.65	133	141	137	135	137	133	0	70.61	0	83.31	0	57.73
117	AFMb049zf9	D3S3615	Z53223	0.62	139	151	145	139	145	139	0	70.61	0	83.31	0	57.73
118	AFM268wg9	D3S1578	Z23902	0.88	140	166	154	140	152	148	0	70.61	0	83.31	0	57.73
119	AFMa142yf5	D3S3561	Z52269	0.73	217	229	223	221	221	219	0	70.61	0	83.31	0	57.73
120	AFMa141zc5	D3S3560	Z52263	0.66	179	183	181	181	183	181	0	70.61	0	83.31	0	57.73
121	AFM287yd9	D3S1588	Z24059	0.75	212	236	228	212	226	220	0	70.61	0	83.31	0	57.73
122	AFM238yc5	D3S1568	Z23748	0.88	276	296	296	292	292	284	0	70.61	0	83.31	0	57.73
123	AFMa133wh1	D3S1621	Z24651	0.73	97	139	123	121	123	121	0	70.61	0	83.31	0	57.73
124	UT6992	D3S2321	L29693	0.61	0	0	0	0	0	0	70.61	0	83.31	0	57.73	
125	AFMb008yh5	D3S3604	Z53068	0.67	208	216	210	208	210	208	0	70.61	0	83.31	0	57.73
126	ATA25A07	D3S2420	G08215	0.77	93	108	108	102	105	99	0	70.61	0	83.31	0	57.73
127	AFMb296zc5	D3S3629	Z53408	0.77	236	256	256	250	246	236	0	70.61	0	83.31	0	57.73
128	AFMb348za9	D3S3667	Z53796	0.7	167	183	179	167	179	167	0	70.61	0	83.31	0	57.73
129	GATA63E04	D3S2456	G08266	0.74	115	135	123	119	127	119	0	70.61	0	83.31	0	57.73
130	AFMa100ze1	D3S3729	Z52003	0.44	126	132	128	126	126	126	0	70.61	0	83.31	0	57.73
131	AFMc017wg9	D3S3688	Z54013	0.64	133	151	147	143	145	143	0	70.61	0	83.31	0	57.73
132	AFM238xb10	D3S3648	Z51195	0.25	294	300	298	298	298	298	0	70.61	0	83.31	0	57.73
133	AFM126xg7	D3S1573	Z23382	0.79	136	154	146	144	146	146	0	70.61	0	83.31	0	57.73
135	Mfd93	D3S1235	L15748	0.47	133	137	135	135	135	135	0	70.61	0	83.31	0	57.73
138	AFMb347zg9	D3S3666	Z53790	0.85	113	137	131	127	131	125	0	72.21	0	84.38	0	59.87
139	AFMb352xe1	D3S3672	Z53826	0.66	134	148	140	140	140	134	0	72.21	0	84.38	0	59.87
140	AFM274yd5	D3S1582	Z23951	0.8	154	178	170	160	158	156	0	72.21	0	84.38	0	59.87
141	AFMb338zg9	D3S3660	Z53727	0.73	192	202	200	198	198	192	0	72.21	0	84.38	0	59.87
142	AFM340xf1	D3S1613	Z24556	0.83	225	253	243	241	239	225	0	72.21	0	84.38	0	59.87
148	AFMa082wh1	D3S3724	Z51922	0.75	208	234	226	226	226	226	0	75.41	0	86.51	0	64.13
149	AFMa072yb9	D3S3721	Z51871	0.71	203	219	207	205	209	205	0	75.41	0	86.51	0	64.13
150	AFMb283ya5	D3S3621	Z53322	0.76	222	232	232	224	226	224	0	75.41	0	86.51	0	64.13
153	AFM191va5	D3S3532	Z51101	0.65	237	245	237	237	243	239	0	77.01	0	87.57	0	66.27
154	GGAA13D09	D3S2402	G08296	0.73	222	246	246	242	238	234	0	77.01	0	87.57	0	66.27
155	UT1458	D3S1540	L18685	0.63	0	0	0	0	0	0	77.01	0	87.57	0	66.27	
156	Mfd99	D3S1236	L02091	0.52	69	79	69	69	79	71	0	77.01	0	87.57	0	66.27
157	AFM210yc5	D3S1295	Z16957	0.62	126	146	136	126	136	126	0	77.01	0	87.57	0	66.27
158	AFM292xh1	D3S1592	Z24120	0.67	281	287	285	283	287	283	0	77.01	0	87.57	0	66.27
159	AFMa119xc1	D3S3553	Z52127	0.86	208	232	222	208	222	222	0	77.01	0	87.57	0.04	66.27
161	AFMa072zh5	D3S3722	Z51877	0.82	213	237	225	223	233	213	0	78.64	1	88.71	0	67.38
163	AFM162xc9	D3S1547	Z23411	0.69	92	100	98	96	98	98	0	78.64	0	89.71	0	67.38
164	Mfd76	D3S1234	L15747	0.61	99	125	107	107	111	111	0	78.64	0	89.71	0	67.38
165	AFMa210za9	D3S3577	Z52506	0.74	288	300	298	294	288	288	0	78.64	0	89.71	0	67.38
166	AFM259zg5	D3S1313	Z17163	0.68	228	238	236	234	234	228	0	78.64	0	89.71	0	67.38
186	AFM220ze1	D3S1562	Z23675	0.72	168	192	184	178	184	178	0	97.75	0	111.11	0	84.26
187	AFM211we3	D3S1296	Z16963	0.72	176	186	182	182	180	180	0	97.75	0	111.11	0	84.26
188	AFM234tb8	D3S1566	Z23701	0.84	225	247	239	239	247	229	0	97.75	0	111.11	0	84.26
189	AFM057xc5	D3S1261	Z16488	0.84	185	217	209	187	209	187	0	97.75	0	111.11	0.25	84.26
190	GATA82H09	D3S2454	G08263	0.61	248	260	252	252	256	254	0	97.75	0	111.11	0.51	84.51
192	AFMa116xa9	D3S3551	Z52112	0.87	242	264	262	248	258	258	0	99.38	0	113.25	0	85.38
193	AFMa176yg9	D3S3568	Z52369	0.68	194	212	210	194	196	194	0	99.38	0	113.25	0	85.38
203	AFMc003zg5	D3S3681	Z53934	0.83	210	246	238	238	238	236	0	109.22	0	128.31	0	89.86
204	UT7503	D3S2323	L30481	0.62	0	0	0	0	0	0	109.22	0	128.31	0	89.86	
205	AFM316vc1	D3S1604	Z24325	0.44	247	255	253	253	253	253	0	109.22	0	128.31	0	89.86
206	GATA146D07	Unknown	G10559	0.66	201	213	209	201	209	201	0	109.22	0	128.31	0	89.86
207	GATA88E12	D3S3049	G08285	0.51	171	191	187	183	187	187	0	109.22	0	128.31	0	89.86
208	AFM191vd8	D3S3508	Z51103	0.69	178	190	190	178	178	178	0	109.22	0	128.31	0	89.86
209	AFM001za2	D3S3507	Z50876	0.58	106	116	114	112	114	114	0	109.22	0	128.31	0	89.86
210	AFM267zf9	D3S1577	Z23898	0.56	221	235	227	227	227	225	0	109.22	0	128.31	0	89.86
211	AFM154xa7	D3S1274	Z16684	0.56	128	136	128	128	128	128	0	109.22	0	128.31	0	89.86
212	GATA113G02	Unknown	G10276	0.8	278	302	282	282	294	282	0	109.22	0	128.31	0	89.86
217	Mfd233A	D3S1254	L02087	0.55	210	220	214	214	214	214	0	110.82	0	129.38	0	91.99
218	GATA121E06	Unknown	G10339	0.72	198	218	206	206	206	202	0	110.82	0	129.38	0	91.99
220	AFM161xg11	D3S1276	Z16716	0.71	190	202	196	194	198	196	0	111.89	0	131.51	0	91.99
221	GGAA16E09	D3S2465	G08299	0.81	308	356	328	328	332	312	0	111.89	0	131.51	0	91.99
223	AFM294zf9	D3S1595	Z24145	0.81	295	317	311	309	305	305	0	112.42	0	131.51	0	93.06
224	UT2085	D3S1544	L17967	0.37	0	0	0	0	0	0	112.42	0	131.51	0	93.06	

TABLE 4-continued

Marker	Dnumber	GenBank- Num	het	min	max	1331-01	1331-02	sex- ave	cM	female	cM	male	cM			
226	GATA196G09	Unknown	G27330	0.8	328	356	344	340	348	340	0	112.42	0	131.51	0	93.06
227	AFMb362yg9	D3S3679	Z53910	0.46	164	172	170	170	170	170	0	112.42	0	131.51	0	93.06
231	Mfd201A	D3S1251	L15753	0.75	125	139	125	125	139	125	0	114.02	0.09	133.47	0	94.13
232	AFMc021xb5	D3S3690	Z54030	0.67	174	188	184	180	182	180	0	114.02	0.09	133.56	0	94.13
233	GATA13H08	D3S2386	G15742	0.78	0	0	0	0	0	0	0	114.02	0	133.65	0	94.13
234	ATC3D09	D3S1752	G08222	0.82	181	208	193	193	205	181	0	114.02	0	133.65	0	94.13
235	AFMb076wd1	D3S3619	Z53279	0.64	175	183	177	175	175	175	0	114.02	0	133.65	0	94.13
236	GATA47B01A	Unknown	Unknown	0.72	225	244	240	236	240	236	0	114.02	0	133.65	0	94.13
242	AFM023xg1	D3S1559	Z23290	0.56	137	159	159	147	147	147	0	115.76	0	136.85	0.03	94.15
243	AFMa065xf5	D3S3716	Z51823	0.71	227	239	235	233	237	233	0	115.76	0	136.85	0.01	94.18
244	ATA22G02	D3S2419	G08214	0.74	213	228	222	213	225	222	0	115.76	0	136.85	0.1	94.19
245	UT6384	D3S2318	L30558	0.6	0	0	0	0	0	0	0	115.76	0	136.85	0.09	94.29
250	AFMb324zc1	D3S3652	Z53610	0.68	152	160	154	154	160	154	0	119.09	0	142.73	0	95.19
251	UT5192	Unknown	L31112	0.51	0	0	0	0	0	0	0	119.09	0	142.73	0	95.19
252	UT2104	D3S1546	L18060	0.58	0	0	0	0	0	0	0	119.09	0	142.73	0	95.19
254	AFMb299zg9	D3S3632	Z53433	0.59	141	157	141	141	157	141	0	120.43	0	145.4	0	95.19
255	GATA198F04	Unknown	G27329	0.7	123	147	147	123	147	135	0	120.43	0	145.4	0	95.19
256	AFM031xa1	D3S3574	Z50894	0.84	102	118	106	102	116	108	0	120.43	0	145.4	0	95.19
260	AFMb326zb1	D3S3654	Z53626	0.58	157	167	159	159	165	161	0	124.16	0	149.68	0	98.39
261	AFM150ye7	D3S2495	Z51025	0.62	233	241	239	237	241	237	0	124.16	0	149.68	0	98.39
262	AFM348te9	D3S1616	Z24586	0.63	101	107	105	103	103	101	0	124.16	0	149.68	0	98.39
263	AFMb313zb1	D3S3638	Z53501	0.52	149	163	151	149	151	149	0	124.16	0	149.68	0	98.39
264	AFM224xc9	D3S1563	Z23681	0.24	216	226	224	224	224	224	0	124.16	0	149.68	0	98.39
265	GATA84B12	D3S3045	G08279	0.82	176	196	184	176	184	176	0	124.16	0	149.68	0	98.39
266	UT7556	D3S2325	L30285	0.64	0	0	0	0	0	0	0	124.16	0	149.68	0	98.39
271	AFM284xf9	D3S1586	Z24039	0.63	289	309	305	303	307	301	0	126.83	0	150.74	0	102.66
272	ATC4D07	D3S2422	G08223	0.61	216	225	225	216	222	216	0	126.83	0	150.74	0	102.66
273	GATA73H11	Unknown	G08275	0.56	173	189	189	185	185	185	0	126.83	0	150.74	0	102.66
274	GATA84B05	D3S3044	G08281	0.79	318	342	342	318	334	326	0	126.83	0	150.74	0	102.66
275	GATA146G09	Unknown	G10636	0.77	184	208	200	196	200	188	0	126.83	0	150.74	0	102.66
276	AFM259va9	D3S1572	Z23835	0.69	244	266	262	244	266	264	0	126.83	0	150.74	0	102.66
278	ms207	Unknown	Unknown	0.71	0	0	0	0	0	0	0	127.89	0	152.87	0	102.66
279	GATA86F05	D3S4018	G08283	0.78	282	302	294	290	298	294	0	127.89	0	152.87	0	102.66
280	UT509	D3S1518	L16269	0.56	0	0	0	0	0	0	0	127.89	0	152.87	0	102.66
281	AFM321xf5	D3S1610	Z24375	0.73	171	189	185	183	183	181	0	127.89	0	152.87	0	102.66
282	AFMb353ze1	D3S3675	Z53837	0.76	215	245	243	221	245	239	0	127.89	0	152.87	0	102.66
285	AFM164xc5	D3S1278	Z16734	0.87	203	231	209	209	221	217	0	129.73	0.14	156.38	0	102.66
286	AFM242xh2	D3S1310	Z17098	0.67	137	147	137	137	147	141	0	129.73	0.22	156.52	0	102.66
287	AFMb346xg9	D3S3665	Z53777	0.62	244	254	252	250	252	252	0	129.73	0.23	156.74	0	102.66
288	AFMa240yb9	D3S3585	Z52666	0.59	261	271	267	267	269	269	0	129.73	0.27	156.97	0	102.66
305	GATA4G01	D3S1765	G08257	0.68	192	216	212	208	204	204	0	139.12	0	165.7	0	112.34
306	UT876	D3S1667	L22960	0.6	0	0	0	0	0	0	0	139.12	0	165.7	0	112.34
307	UT1641	D3S2302	L17892	0.61	0	0	0	0	0	0	0	139.12	0	165.7	0	112.34
308	AFMb353zd1	D3S3674	Z53836	0.82	181	205	197	185	187	187	0	139.12	0	165.7	0	112.34
309	AFMb319yf1	D3S3646	Z53559	0.71	197	219	201	201	201	199	0	139.12	0	165.7	0	112.34
310	AFMa072ya5	D3S3720	Z51870	0.86	216	236	230	222	230	222	0	139.12	0	165.7	0	112.34
311	AFMa119vf5	D3S3552	Z52123	0.79	161	177	165	161	177	173	0	139.12	0	165.7	0	112.34
312	AFMa137zf5	D3S3558	Z52249	0.82	116	130	128	126	124	124	0	139.12	0	165.7	0	112.34
317	AFMb307yc5	D3S3636	Z53469	0.87	160	196	192	184	196	192	0	140.19	0	165.7	0	114.48
318	AFMb318ze9	D3S3645	Z53551	0.64	190	212	212	210	192	192	0	140.19	0	165.7	0	114.48
319	AFMa191zg5	D3S3573	Z52433	0.77	164	176	176	172	172	170	0	140.19	0	165.7	0	114.48
320	AFMa183zb5	D3S3569	Z52382	0.7	110	130	122	122	122	110	0	140.19	0	165.7	0	114.48
323	AFMa240xe5	D3S3584	Z52661	0.64	143	147	147	143	147	143	0	143.94	0	173.21	0	114.48
324	AFMb025we5	D3S3607	Z53134	0.71	144	164	160	144	160	160	0	143.94	0	173.21	0	114.48
325	AFMb020zb9	D3S3606	Z53117	0.83	155	181	171	169	171	169	0	143.94	0	173.21	0	114.48
326	UT6282	D3S2316	L30710	0.45	0	0	0	0	0	0	0	143.94	0	173.21	0.54	114.48
328	UT5225	D3S1671	L31137	0.6	0	0	0	0	0	0	0	146.6	0	177.48	0.18	115.37
329	ACPP	Unknown	M24902	0.62	180	196	188	180	192	180	0	146.6	0	177.48	0	115.55
330	AFM198yh6	D3S1290	Z16861	0.83	210	230	224	214	220	212	0	146.6	0	177.48	0	115.55
331	AFM284ze9	D3S3514	Z51261	0.71	258	270	266	258	266	264	0	146.6	0	177.48	0	115.55
332	AFM151yf2	D3S1273	Z16682	0.79	100	122	112	108	114	114	0	146.6	0	177.48	0	115.55
333	ACPPmfd	Unknown	Unknown	0.62	0	0	0	0	0	0	0	146.6	0	177.48	0	115.55
334	AFM284ze5	D3S1587	Z24044	0.57	215	227	223	219	223	219	0	146.6	0	177.48	0	115.55
335	UT7131	D3S2322	L29740	0.58	0	0	0	0	0	0	0	146.6	0	177.48	0	115.55
336	AFM199xd6	D3S1292	Z16871	0.84	142	166	158	144	164	156	0	146.6	0	177.48	0	115.55
337	AFM295wc9	D3S1596	Z24148	0.68	89	125	121	107	109	89	0	146.6	0	177.48	0	115.55
338	AFMa109we9	D3S3548	Z52059	0.55	217	223	219	219	219	217	0	146.6	0	177.48	0	115.55
351	AFM141xa3	D3S3528	Z51009	0.61	266	272	270	266	272	266	0	151.49	0	182.93	0	119.82
352	AFM267xd9	D3S1576	Z23894	0.76	189	203	191	191	195	191	0	151.49	0	182.93	0	119.82
353	AFM347yg1	D3S1615	Z24582	0.5	170	186	172	172	186	172	0	151.49	0	182.93	0	119.82
355	AFMa246yd5	D3S3586	Z52701	0.67	102	114	102	102	104	102	0	152.62	0	182.93	0	121.95
356	AFM268vc9	D3S1316	Z17193	0.7	273	293	283	281	285	283	0	152.62	0	182.93	0	121.95
357	GATA30F06	D3S2435	G08245	0.76	131	163	155	147	143	143	0	152.62	0	182.93	0	121.95
358	AFMa121wd5	D3S3554	Z52135	0.8	192	214	210	200	200	192	0	152.62	0	182.93	0	121.95
359	GATA4A10	D3S1764	G08258	0.79	225	253	253	245	241	233	0	152.62	0	182.93	0	121.95
360	LA153mfd	D3S1206	Unknown	0.67	0	0	0	0	0	0	0	152.62	0	182.93	0	121.95
363	AFMb042xa9	D3S3612	Z53198	0.71	176	196	184	180	180	178	0	153.74	0	182.93	0	124.09

TABLE 4-continued

Marker	Dnumber	GenBank- Num	het	min	max	1331-01	1331-02	sex- ave	cM	female	cM	male	cM	
364	AFM240ya11	D3S1309	Z17089	0.74	132	150	146	142	146	140	0	153.74	0	124.09
365	AFMc028yb9	D3S3694	Z54062	0.84	138	162	154	152	140	138	0	153.74	0	124.09
374	AFM210ve7	D3S1557	Z23589	0.67	177	201	191	177	197	193	0	161.04	0	129.45
375	Mfd17	D3S196	X54563	0.7	86	96	96	94	94	94	0	161.04	0	129.45
376	AFM319zfl	D3S1608	Z24357	0.6	184	206	200	186	200	200	0	161.04	0	129.45
377	GATA3C02	D3S1744	G08246	0.77	131	163	151	143	159	151	0	161.04	0	129.45
378	AFMa041zg9	D3S3704	Z51566	0.6	279	305	283	283	283	283	0	161.04	0	129.45
379	AFM292ye5	D3S1593	Z24123	0.78	137	153	141	139	153	141	0	161.04	0	129.45
384	ATA34D05	D3S3022	G08217	0.71	239	251	248	248	242	242	0	165.32	0	130.52
385	AFMb341xe9	D3S3661	Z53744	0.45	267	273	271	271	273	273	0	165.32	0	130.52
386	AFMa043tf5	D3S3705	Z51568	0.67	228	236	234	234	236	228	0	165.32	0	130.52
393	GATA8F01	D3S1746	G08290	0.85	248	284	276	272	260	256	0	169.6	0	131.58
394	AFM164yg9	D3S1279	Z16741	0.85	264	282	276	272	272	270	0	169.6	0	131.58
395	AFMc018we1	D3S3689	Z54017	0.87	109	149	149	145	143	143	0	169.6	0	131.58
397	AFMb361zd5	D3S3677	Z53900	0.68	236	250	246	244	236	236	0	170.14	0	132.65
398	AFM184xd12	D3S3587	Z51091	0.46	147	153	151	149	149	149	0	170.14	0	132.65
399	UT607	D3S1978	L30044	0.62	0	0	0	0	0	0	0	170.14	0	132.65
400	AFM277wf9	D3S1584	Z23979	0.73	148	162	154	154	158	156	0	170.14	0	132.65
401	AFM168yb4	D3S3531	Z51078	0.73	210	256	218	214	218	218	0	170.14	0	132.65
406	GGAAB07	D3S2404	G08302	0.82	106	158	150	106	146	106	0	172.27	0	133.71
408	Mfd124	D3S1237	L15749	0.79	176	197	0	0	0	0	0	172.27	0	133.71
409	AFM319yb1	D3S1607	Z24353	0.8	230	244	234	230	238	238	0	172.27	0	133.71
410	AFM157xb4	D3S1275	Z16699	0.73	257	281	261	261	267	257	0	172.27	0	133.71
413	AFM200ze11	D3S1553	Z23516	0.55	163	175	171	171	171	171	0	173.34	0.27	134.78
414	Mfd303	D3S1439	L14311	0.56	170	180	170	170	174	172	0	173.34	0	134.78
415	AFMa210wh5	D3S3575	Z52498	0.79	207	229	223	219	225	209	0	173.34	0	134.78
422	AFM350tc5	D3S3702	Z51507	0.8	214	228	224	222	222	220	0	174.94	0	134.78
423	ATA21H07	D3S2415	G08211	0.68	117	141	135	117	141	132	0	174.94	0	134.78
424	AFM116xb4	D3S1268	Z16608	0.86	123	145	139	139	125	125	0	174.94	0	134.78
425	UT508	D3S1517	L16268	0.53	0	0	0	0	0	0	0	174.94	0	134.78
426	GATA91E01	D3S3052	G08291	0.77	156	180	172	172	176	172	0	174.94	0	134.78
427	AFM031yc5	D3S1258	Z16453	0.52	165	177	175	169	173	173	0	174.94	0	134.78
431	AFM081yh3	D3S1264	Z16543	0.8	253	263	263	257	257	257	0	176.54	0	136.91
432	AFMa062xd1	D3S3712	Z51803	0.78	194	208	204	198	198	196	0	176.54	0	136.91
433	AFMc004xc9	D3S3682	Z53935	0.56	223	229	225	225	225	223	0	176.54	0	136.91
434	GATA3H01	D3S1763	G08247	0.8	260	280	272	272	268	268	0	176.54	0	136.91
435	GATA167F11	Unknown	G27253	0.8	190	228	220	194	212	208	0	176.54	0	136.91
436	Mfd205A	D3S1253	L15755	0.49	77	89	85	85	85	85	0	176.54	0	136.91
437	AFMb353ya9	D3S3673	Z53834	0.79	133	151	141	137	143	139	0	176.54	0	136.91
441	Mfd182a	D3S1243	L15752	0.5	177	183	181	177	183	183	0	180.8	0	142.25
442	AFM179xb10	D3S1282	Z16785	0.78	140	154	146	142	146	142	0	180.8	0	142.25
443	AFM224ya3	D3S1564	Z23684	0.45	176	190	178	178	178	178	0	180.8	0	142.25
444	AFMa074ye1	D3S3723	Z51892	0.63	137	143	141	139	141	139	0	180.8	0	142.25
446	UT672	D3S1525	L16308	0.56	0	0	0	0	0	0	0	181.87	0	142.25
448	AFMa044xe1	D3S3523	Z51582	0.68	187	203	199	197	199	197	0	181.87	0	142.25
450	AFM155xd6	D3S1574	Z23405	0.79	103	127	117	111	121	111	0	181.87	0	142.25
467	AFM326xc5	D3S3699	Z51397	0.76	236	252	252	250	248	246	0	191.79	0	152.95
468	AFMa103xb9	D3S3730	Z52026	0.83	138	156	152	140	152	140	0	191.79	0	152.95
469	AFMa162xb9	D3S3565	Z52333	0.46	156	162	158	158	158	158	0	191.79	0	152.95
470	AFMb343zc5	D3S3662	Z53762	0.5	171	193	189	171	189	189	0	191.79	0	152.95
482	AFMa184za5	D3S3570	Z52396	0.71	172	188	178	176	188	176	0	201.14	0	157.23
483	UT871	D3S1530	L16344	0.54	0	0	0	0	0	0	0	201.14	0	157.23
484	AFM059xa9	D3S1262	Z16497	0.8	112	126	120	116	126	112	0	201.14	0	157.23
485	UT5070	D3S2311	L31013	0.57	0	0	0	0	0	0	0	201.14	0	157.23
496	GATA6G12	D3S2398	G08270	0.77	266	298	274	274	286	278	0	209.41	0	158.3
497	UT441	D3S1661	L29977	0.66	0	0	0	0	0	0	0	209.41	0	158.3
498	AFM164zf8	D3S3530	Z51071	0.8	162	178	170	162	174	172	0	209.41	0	158.3
505	GATA83E04	D3S3043	G08280	0.63	155	175	171	167	171	167	0	214.45	0	164.8
506	AFMa137wc9	D3S3557	Z52240	0.74	297	313	313	301	313	309	0	214.45	0	164.8
507	AFM308yf1	D3S1601	Z24269	0.86	184	214	202	200	198	196	0	214.45	0	164.8
508	UT604	D3S1662	L30042	0.59	0	0	0	0	0	0	0	214.45	0	164.8
509	AFMb343zf5	D3S3663	Z53763	0.76	207	229	213	211	209	209	0	214.45	0	164.8
513	AFMb043xe9	D3S2748	Z53204	0.73	80	112	82	82	112	82	0	217.24	0	165.87
514	UT605	D3S1523	L16296	0.49	0	0	0	0	0	0	0	217.24	0	165.87
515	AFMa143yc9	D3S3562	Z52281	0.7	218	230	222	222	224	222	0	217.24	0	165.87
516	UT6129	D3S2305	L30676	0.63	0	0	0	0	0	0	0	217.24	0	165.87
517	AFMb316yb9	D3S3642	Z53524	0.41	149	167	163	151	167	149	0	217.24	0	167.12
522	UT5698	D3S2306	L30537	0.63	0	0	0	0	0	0	0	224.88	0	180.19
523	AFM136xc1	D3S1272	Z16643	0.79	262	276	272	272	270	264	0	224.88	0	180.46
524	AFM254ve1	D3S1311	Z17273	0.82	134	152	134	134	146	144	0	224.88	0	180.46
525	3QTEL05	D3S4560	Unknown	0.8	0	0	0	0	0	0	0	224.88	0	180.46

SEQUENCE LISTING

<160> NUMBER OF SEQ ID NOS: 18

<210> SEQ ID NO 1
 <211> LENGTH: 19
 <212> TYPE: DNA
 <213> ORGANISM: Unknown
 <220> FEATURE:
 <223> OTHER INFORMATION: forward primer

<400> SEQUENCE: 1

cactacccca gggtcatca 19

<210> SEQ ID NO 2
 <211> LENGTH: 17
 <212> TYPE: DNA
 <213> ORGANISM: Unknown
 <220> FEATURE:
 <223> OTHER INFORMATION: reverse primer

<400> SEQUENCE: 2

gcttcagcct cagcaca 17

<210> SEQ ID NO 3
 <211> LENGTH: 17
 <212> TYPE: DNA
 <213> ORGANISM: Unknown
 <220> FEATURE:
 <223> OTHER INFORMATION: forward primer

<400> SEQUENCE: 3

agctcacttt tggcctc 17

<210> SEQ ID NO 4
 <211> LENGTH: 20
 <212> TYPE: DNA
 <213> ORGANISM: Unknown
 <220> FEATURE:
 <223> OTHER INFORMATION: reverse primer

<400> SEQUENCE: 4

tggatcttgg atgttcattc 20

<210> SEQ ID NO 5
 <211> LENGTH: 20
 <212> TYPE: DNA
 <213> ORGANISM: Unknown
 <220> FEATURE:
 <223> OTHER INFORMATION: forward primer

<400> SEQUENCE: 5

aattgcagcc tgtgagagac 20

<210> SEQ ID NO 6
 <211> LENGTH: 20
 <212> TYPE: DNA
 <213> ORGANISM: Unknown
 <220> FEATURE:
 <223> OTHER INFORMATION: reverse primer

<400> SEQUENCE: 6

gcctccataa ttgcatgaac 20

<210> SEQ ID NO 7
 <211> LENGTH: 16
 <212> TYPE: DNA

-continued

```

<213> ORGANISM: Unknown
<220> FEATURE:
<223> OTHER INFORMATION: forward primer

<400> SEQUENCE: 7

agaaaccatg cccttg                               16

<210> SEQ ID NO 8
<211> LENGTH: 19
<212> TYPE: DNA
<213> ORGANISM: Unknown
<220> FEATURE:
<223> OTHER INFORMATION: reverse primer

<400> SEQUENCE: 8

tgcagtcacc tgttagaa                             19

<210> SEQ ID NO 9
<211> LENGTH: 20
<212> TYPE: DNA
<213> ORGANISM: Unknown
<220> FEATURE:
<223> OTHER INFORMATION: forward primer

<400> SEQUENCE: 9

tgagttttat tggccaaagc                           20

<210> SEQ ID NO 10
<211> LENGTH: 20
<212> TYPE: DNA
<213> ORGANISM: Unknown
<220> FEATURE:
<223> OTHER INFORMATION: reverse primer

<400> SEQUENCE: 10

tctttccatg gatgctgtct                           20

<210> SEQ ID NO 11
<211> LENGTH: 20
<212> TYPE: DNA
<213> ORGANISM: Unknown
<220> FEATURE:
<223> OTHER INFORMATION: forward primer

<400> SEQUENCE: 11

gggagtgggg taaaaaaaaa                           20

<210> SEQ ID NO 12
<211> LENGTH: 20
<212> TYPE: DNA
<213> ORGANISM: Unknown
<220> FEATURE:
<223> OTHER INFORMATION: reverse primer

<400> SEQUENCE: 12

cctctaacc ccagaaatgt                             20

<210> SEQ ID NO 13
<211> LENGTH: 20
<212> TYPE: DNA
<213> ORGANISM: Unknown
<220> FEATURE:
<223> OTHER INFORMATION: forward primer

<400> SEQUENCE: 13

ttctgatgta atcgacttgc                           20

```


-continued

```

<210> SEQ ID NO 14
<211> LENGTH: 20
<212> TYPE: DNA
<213> ORGANISM: Unknown
<220> FEATURE:
<223> OTHER INFORMATION: reverse primer

<400> SEQUENCE: 14
ccacccaaac ctaacagata                20

<210> SEQ ID NO 15
<211> LENGTH: 22
<212> TYPE: DNA
<213> ORGANISM: Unknown
<220> FEATURE:
<223> OTHER INFORMATION: reverse primer

<400> SEQUENCE: 15
agacagtcaa gaataactgc cc            22

<210> SEQ ID NO 16
<211> LENGTH: 20
<212> TYPE: DNA
<213> ORGANISM: Unknown
<220> FEATURE:
<223> OTHER INFORMATION: reverse primer

<400> SEQUENCE: 16
ctgtggctca aaagctgaat                20

<210> SEQ ID NO 17
<211> LENGTH: 23
<212> TYPE: DNA
<213> ORGANISM: Unknown
<220> FEATURE:
<223> OTHER INFORMATION: forward primer

<400> SEQUENCE: 17
cagattaact ttctgccaga gag            23

<210> SEQ ID NO 18
<211> LENGTH: 20
<212> TYPE: DNA
<213> ORGANISM: Unknown
<220> FEATURE:
<223> OTHER INFORMATION: reverse primer

<400> SEQUENCE: 18
gagtgccta gatggaaggt                20

```

What is claimed is:

1. A method of identifying and reconstructing the genotype of a common ancestor among humans, said method comprising:

obtaining genetic samples from a plurality of humans;
analyzing the genetic samples using the polymerase chain reaction to determine a first data set comprising genetic information characterizing short tandem repeats in linkage disequilibrium for each member of the plurality of humans, wherein the genetic information includes autosomal genetic information, wherein the genetic information comprises a unique genetic identifier for each member of the plurality of humans, and wherein the genetic information comprises at least one genetic marker that is

identical by descent among humans within three to ten successive lineal ancestral familial generations of each other;
providing a computer readable storage medium comprising a database and analytical programming for cross-referencing and comparing genetic information and genealogical information;
inputting the first data set into the database;
inputting a second data set into the database, the second data set comprising genealogical information from said plurality of members;
evaluating the genetic information for homology among the short tandem repeats; and
associating the genetic information of the first data set with the genealogical information of the second data set;

identifying and displaying a common ancestor between at least two members of the plurality of humans using the analytical programming to cross-reference and compare the associated genetic information of the first data set and the genealogical information of the second data set; and

reconstructing a genotype of the common ancestor using at least the genetic information of the at least two members of the plurality of humans, in the absence of a genetic sample from the common ancestor, the common ancestor being previously unidentified within the genealogical information of at least one member of the at least two members of the plurality of members at the time the method is performed, the common ancestor being within three to ten successive lineal ancestral familial generations of each of said at least two members, each generation being defined by a meiotic event;

wherein the level of biological relatedness of the at least two members of the plurality of members is undetermined at the time the method is performed.

2. The method according to claim 1, wherein evaluating the genetic information for homology comprises identifying a plurality of chromosomal fragments in said first data set that are substantially identical by descent, and associating and displaying the genetic information of the first data set with the genealogical information of the second data set comprises correlating the substantially identical chromosomal fragments with said genealogical information in said second data set.

3. The method according to claim 1, wherein said first data set is in genetic haplotype form.

4. The method according to claim 1, wherein associating the genetic information of the first data set with the genea-

logical information of the second data set comprises representing the degree of correlation between said first and second data sets statistically.

5. The method according to claim 1, wherein the short tandem repeats in linkage disequilibrium comprise 3 to 5 sets of genetic markers.

6. The method according to claim 1, wherein the identity of the common ancestor is previously unknown to at least two members of the at least two members of the plurality of humans.

7. The method according to claim 1, wherein the at least two members of the plurality of humans have at least two separate lines of descent from the common ancestor.

8. The method according to claim 1, wherein the each of the short tandem repeats in linkage disequilibrium is represented at a specific location on a chromosome.

9. The method according to claim 1, wherein the method further comprises:

producing a physical genealogical record display comprising either the genotype of the common ancestor, or the at least two members of the plurality of humans positioned in a family tree or pedigree chart.

10. The method according to claim 9, wherein the physical genealogical record display further comprises information about the physical characteristics or personal accomplishments of the identified and displayed common ancestor.

11. The method according to claim 1, wherein the primers used in the polymerase chain reaction comprise at least one primer selected from the group consisting of SEQ ID NOs: 1-18.

12. The method according to claim 1, wherein the first data set comprises genetic information characterizing at least 250 short tandem repeats in linkage disequilibrium for each member of the plurality of humans.

* * * * *